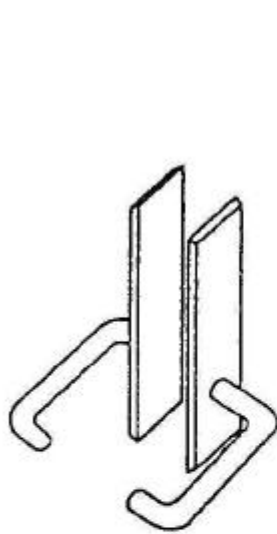
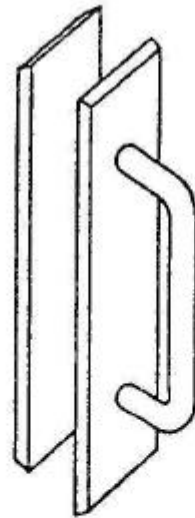




B.1.10 and B.6.1

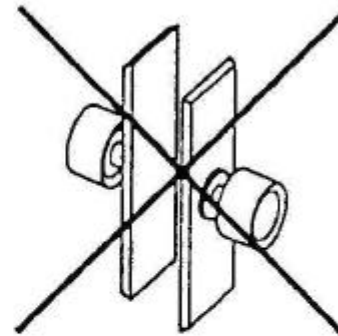


Lever  
handles



Push plate  
door pull

**Recommended**



Knob  
handles

**Not recommended**

### **Handles**

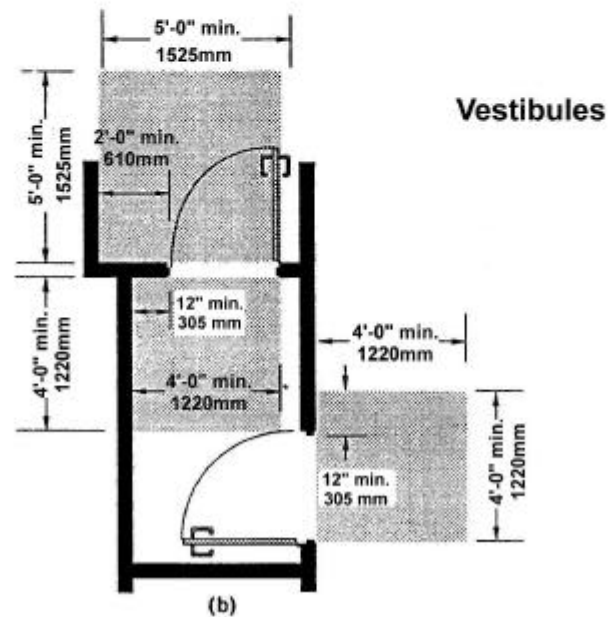
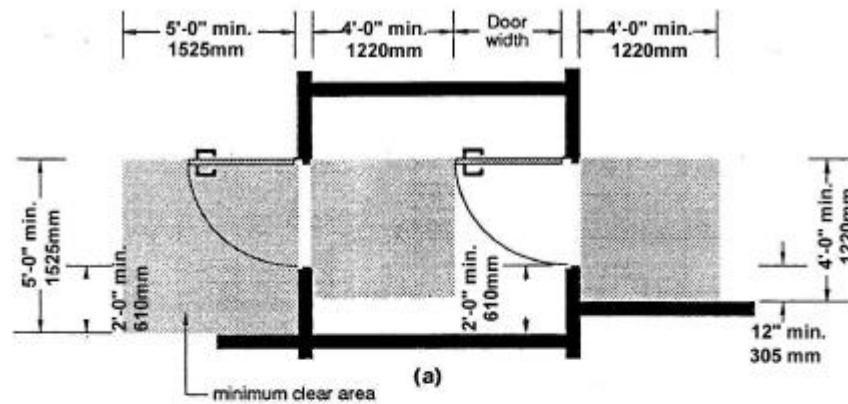
"With the permission of Canadian Standards Association, material is reproduced from CSA Standard CAN/CSA-B651-95 (R2001), Barrier-Free Design, which is copyrighted by Canadian Standards Association, 178 Rexdale Blvd., Toronto, Ontario, M9W 1R3. While use of this material has been authorized Csa shall not be responsible for the manner in which the information is presented, nor for any interpretation thereof."

## Hospitality Accessibility Checklist

### Interior Areas



#### B.1.11 and B.1.12



"With the permission of Canadian Standards Association, material is reproduced from CSA Standard CAN/CSA-B651-95 (R2001), Barrier-Free Design, which is copyrighted by Canadian Standards Association, 178 Rexdale Blvd., Toronto, Ontario, M9W 1R3. While use of this material has been authorized Csa shall not be responsible for the manner in which the information is presented, nor for any interpretation thereof."



B.1.13

1/2" (1.25)  
MAXIMUM



AVOID MATS, RUGS THICKER THAN  
1/2" (1.25), OR WHICH ARE  
RECESSED MORE THAN 1/2" (1.25)

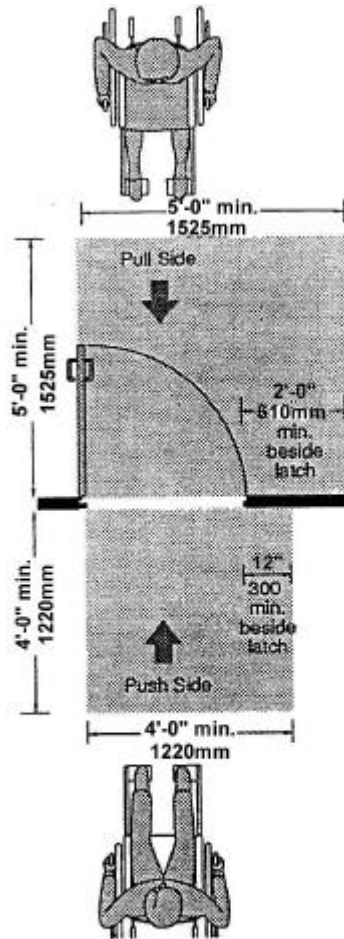
## Thresholds

## Hospitality Accessibility Checklist

### Interior Areas



#### B.1.17



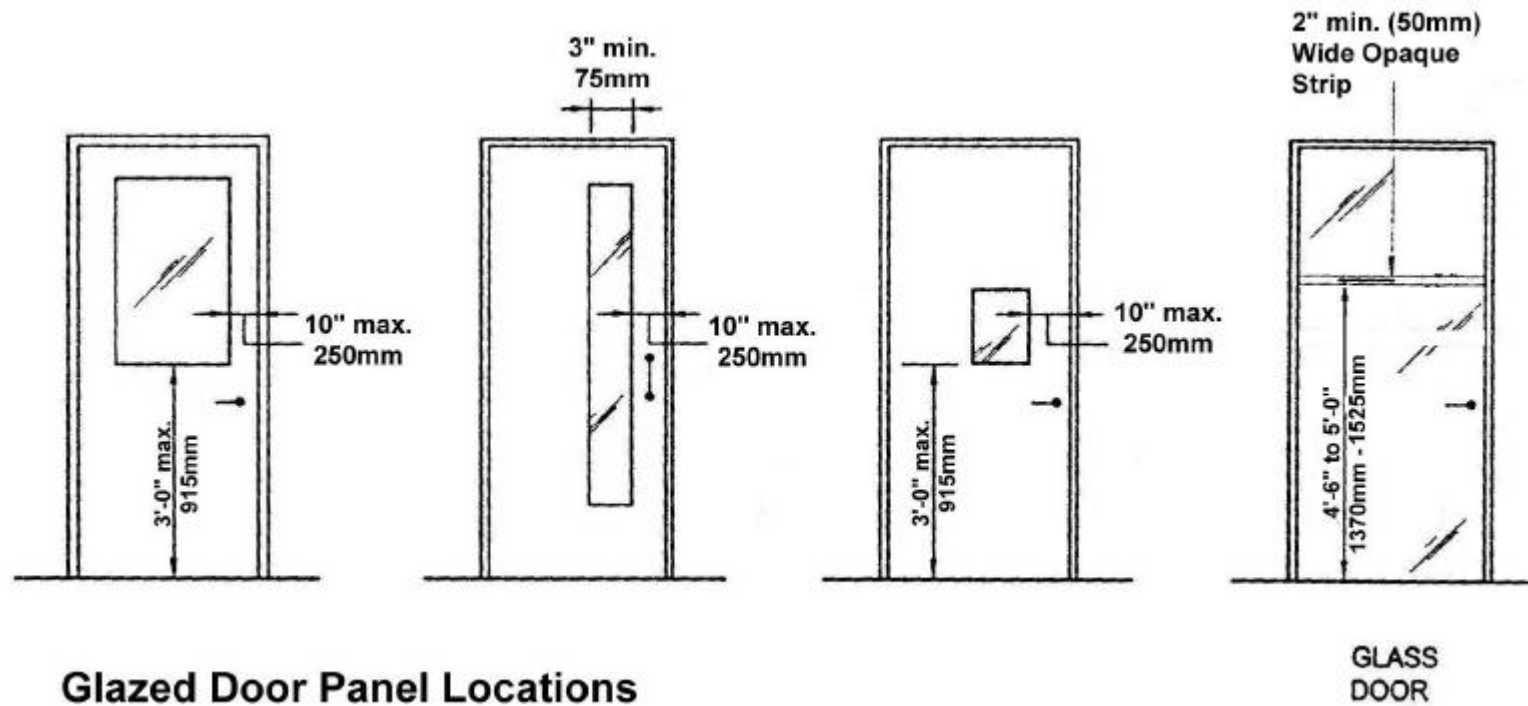
(a) Front approach at hinge door

Minimum Doorway Manoeuvring Space

"With the permission of Canadian Standards Association, material is reproduced from CSA Standard CAN/CSA-B651-95 (R2001), Barrier-Free Design, which is copyrighted by Canadian Standards Association, 178 Rexdale Blvd., Toronto, Ontario, M9W 1R3. While use of this material has been authorized Csa shall not be responsible for the manner in which the information is presented, nor for any interpretation thereof."

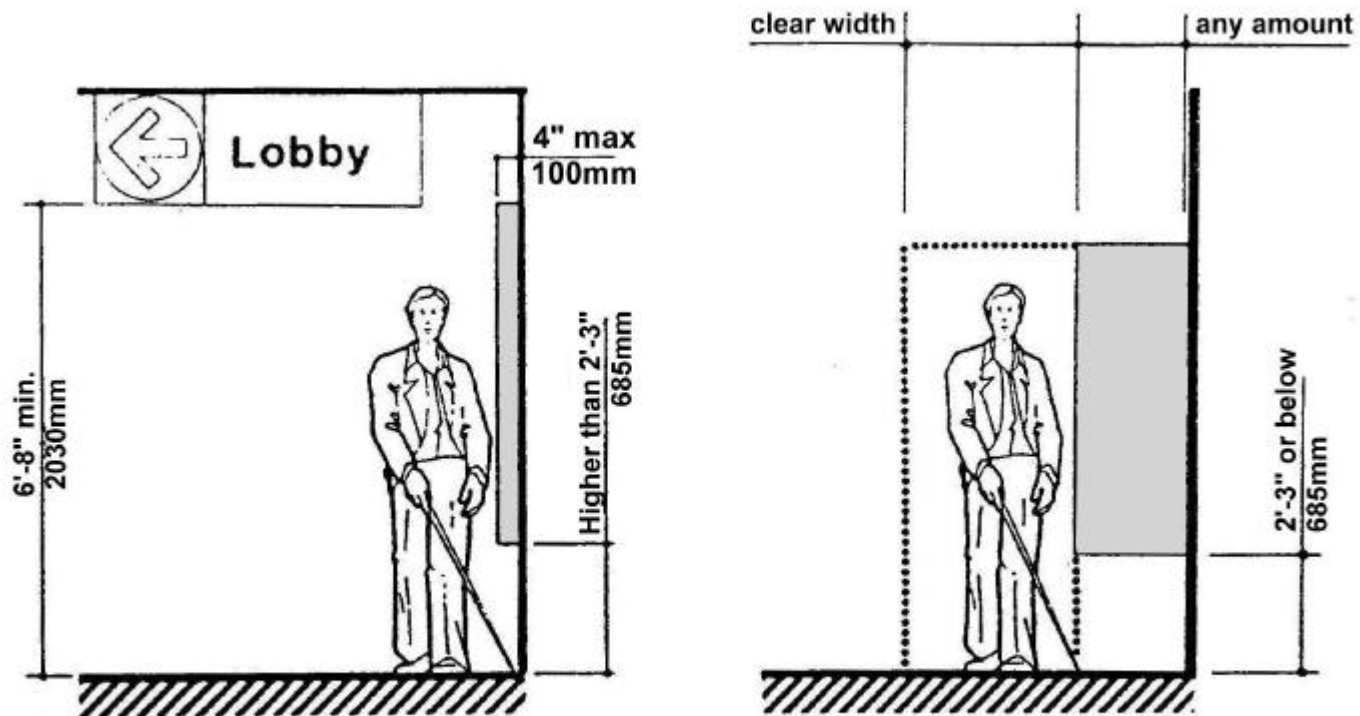


B.1.18





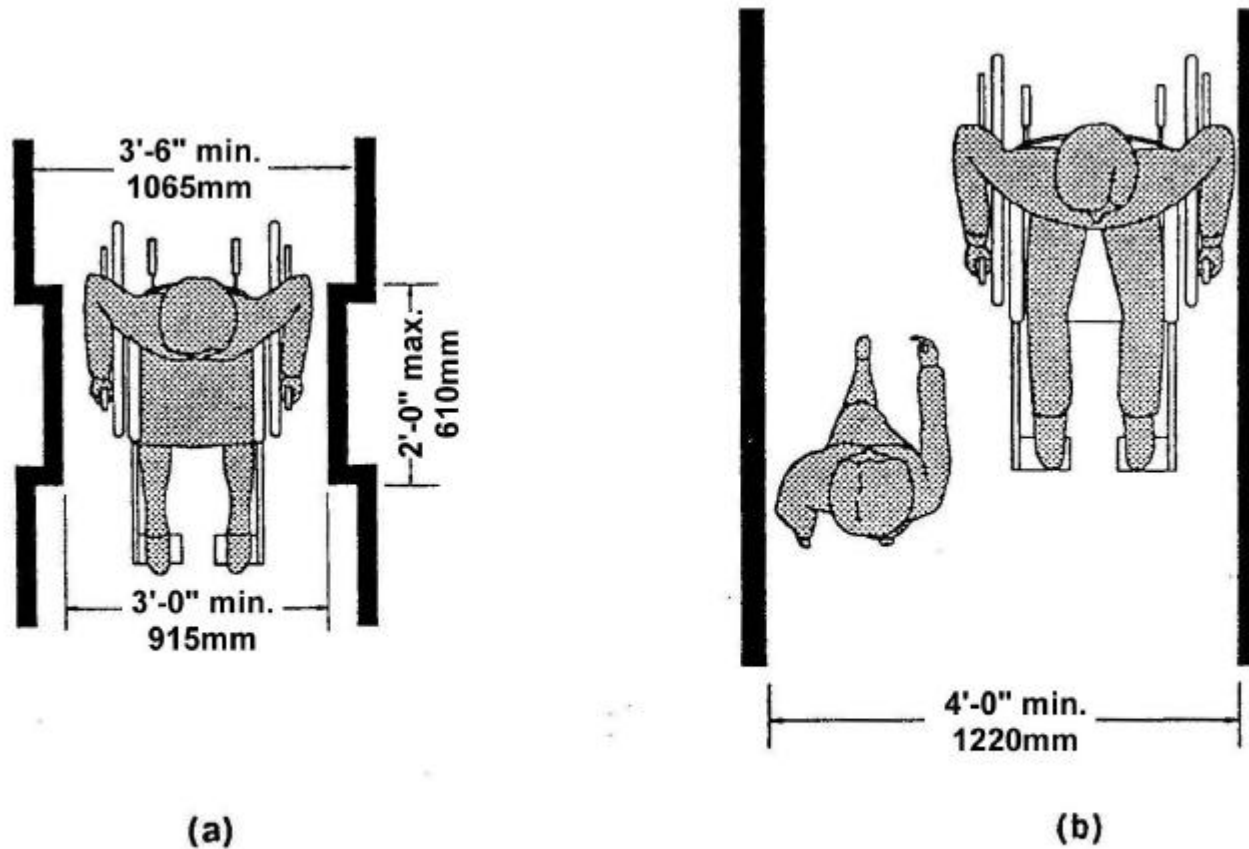
**B.2.3**



**Clearances for Cane Users**



B.2.6

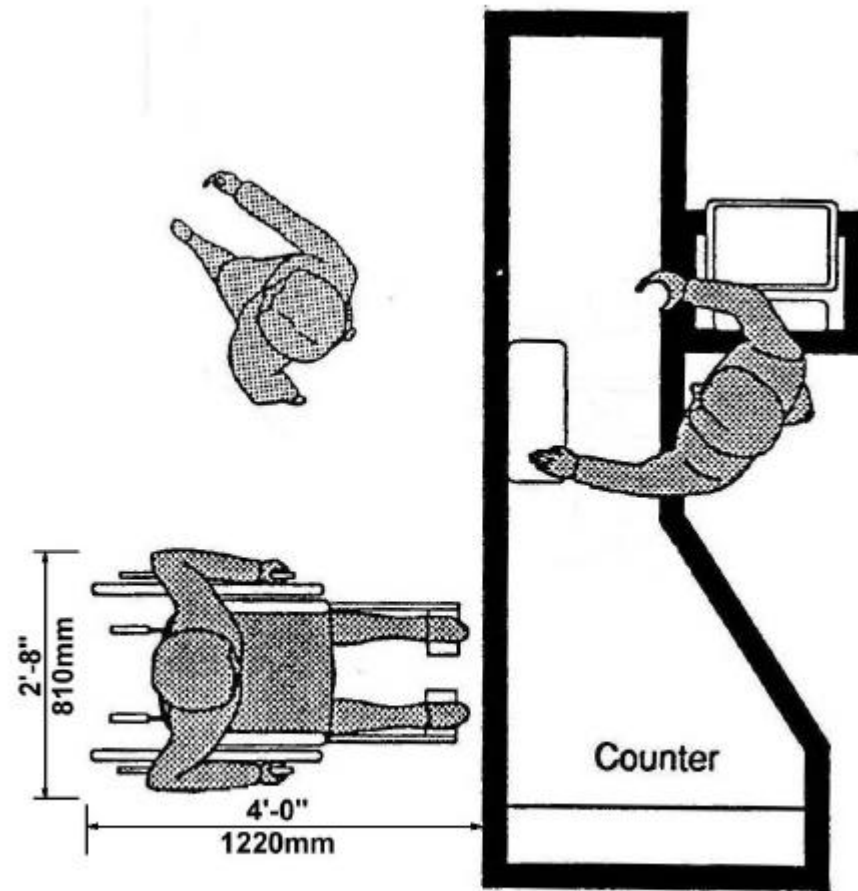


**Minimum Passing Dimensions**

"With the permission of Canadian Standards Association, material is reproduced from CSA Standard CAN/CSA-B651-95 (R2001), Barrier-Free Design, which is copyrighted by Canadian Standards Association, 178 Rexdale Blvd., Toronto, Ontario, M9W 1R3. While use of this material has been authorized Csa shall not be responsible for the manner in which the information is presented, nor for any interpretation thereof."



**B.3.1**



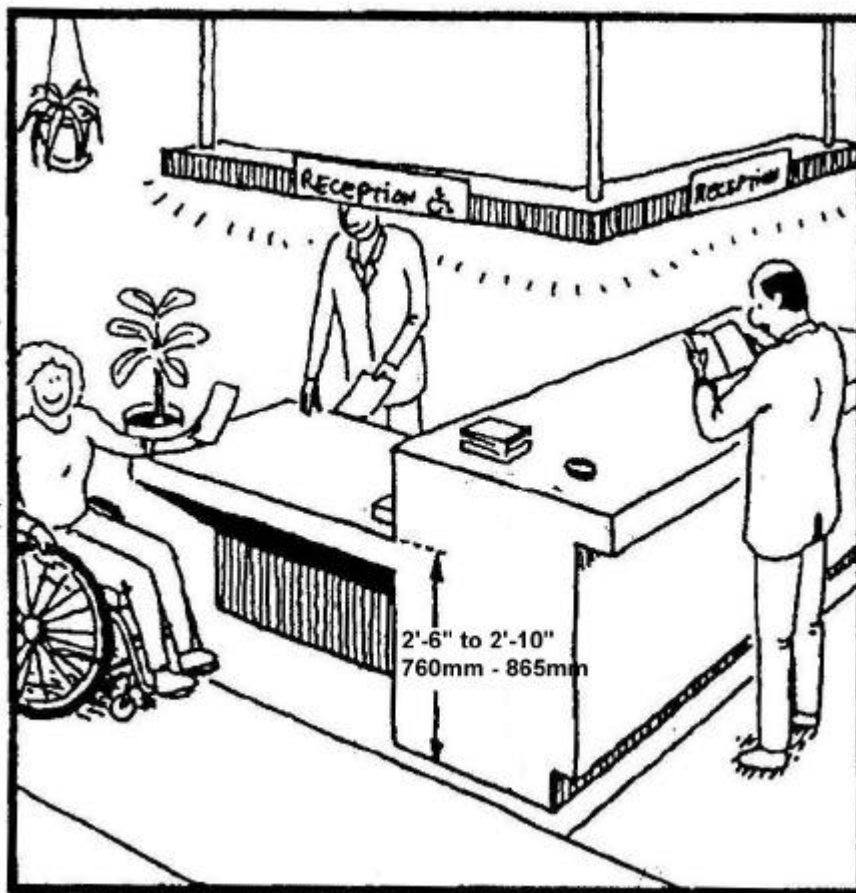
**Service Counters**

"With the permission of Canadian Standards Association, material is reproduced from CSA Standard CAN/CSA-B651-95 (R2001), Barrier-Free Design, which is copyrighted by Canadian Standards Association, 178 Rexdale Blvd., Toronto, Ontario, M9W 1R3. While use of this material has been authorized Csa shall not be responsible for the manner in which the information is presented, nor for any interpretation thereof."





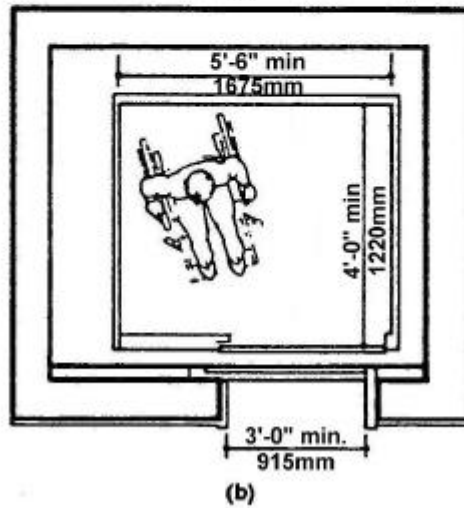
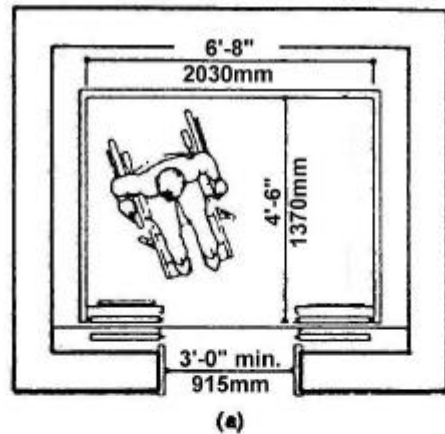
B.3.2



Check-in or Service Counter



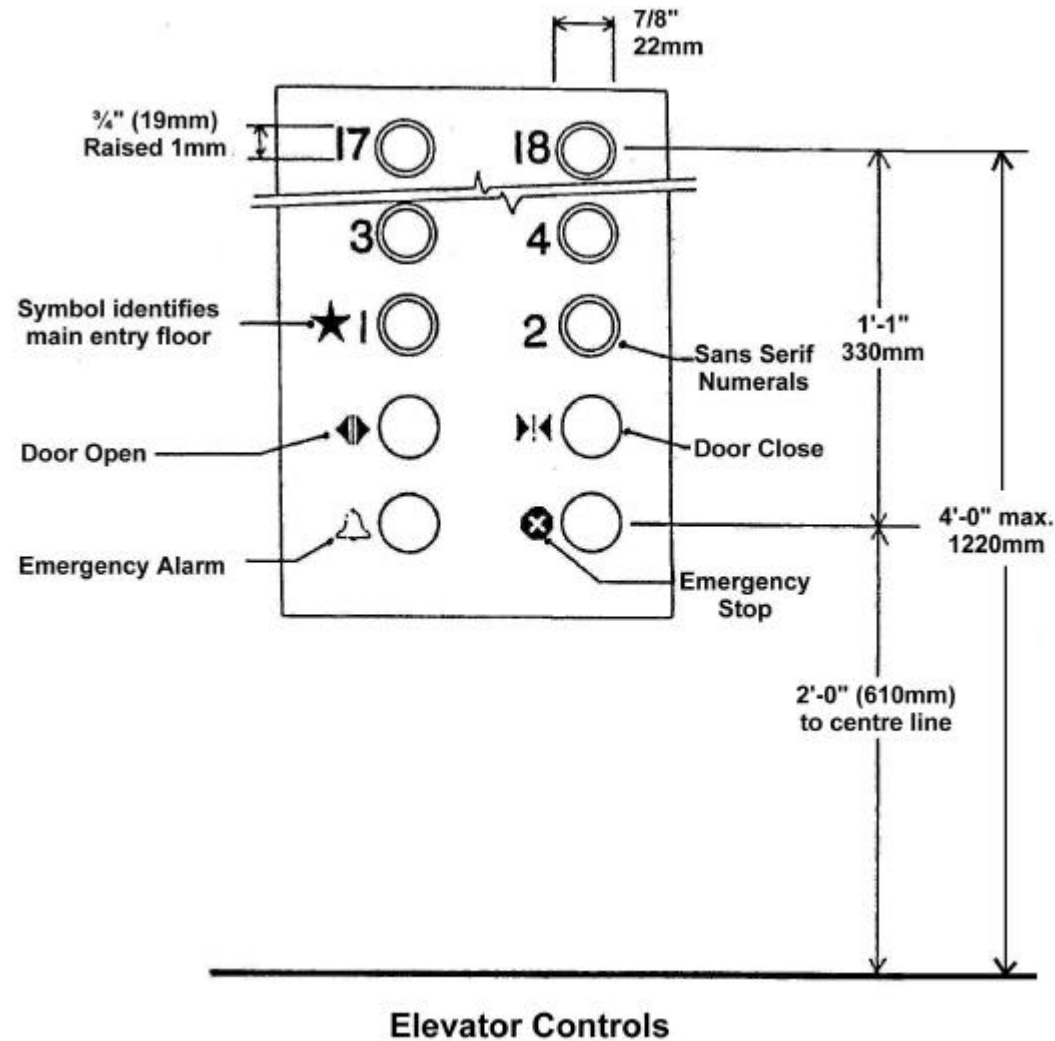
**B.4.4**



**Minimum Dimensions of Elevator Cars**



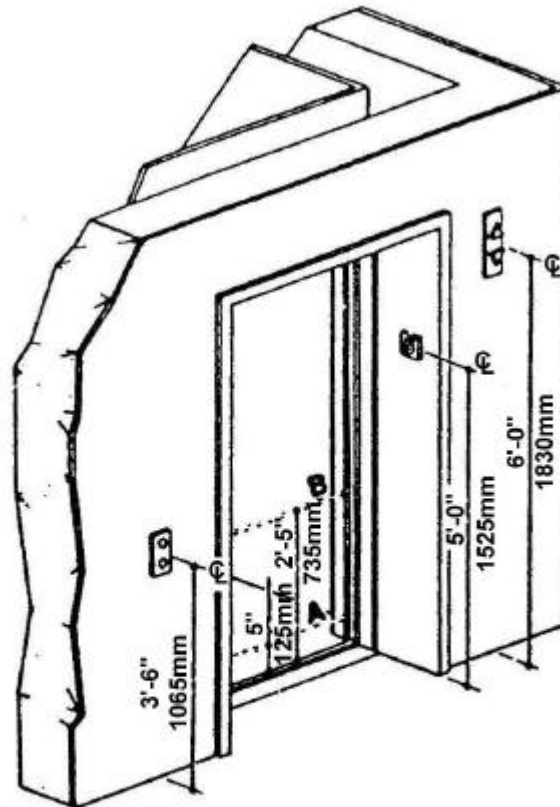
**B.4.5**



"With the permission of Canadian Standards Association, material is reproduced from CSA Standard CAN/CSA -B651-95 (R2001), Barrier-Free Design, which is copyrighted by Canadian Standards Association, 178 Rexdale Blvd., Toronto, Ontario, M9W 1R3. While use of this material has been authorized Csa shall not be responsible for the manner in which the information is presented, nor for any interpretation thereof."



**B.4.8**

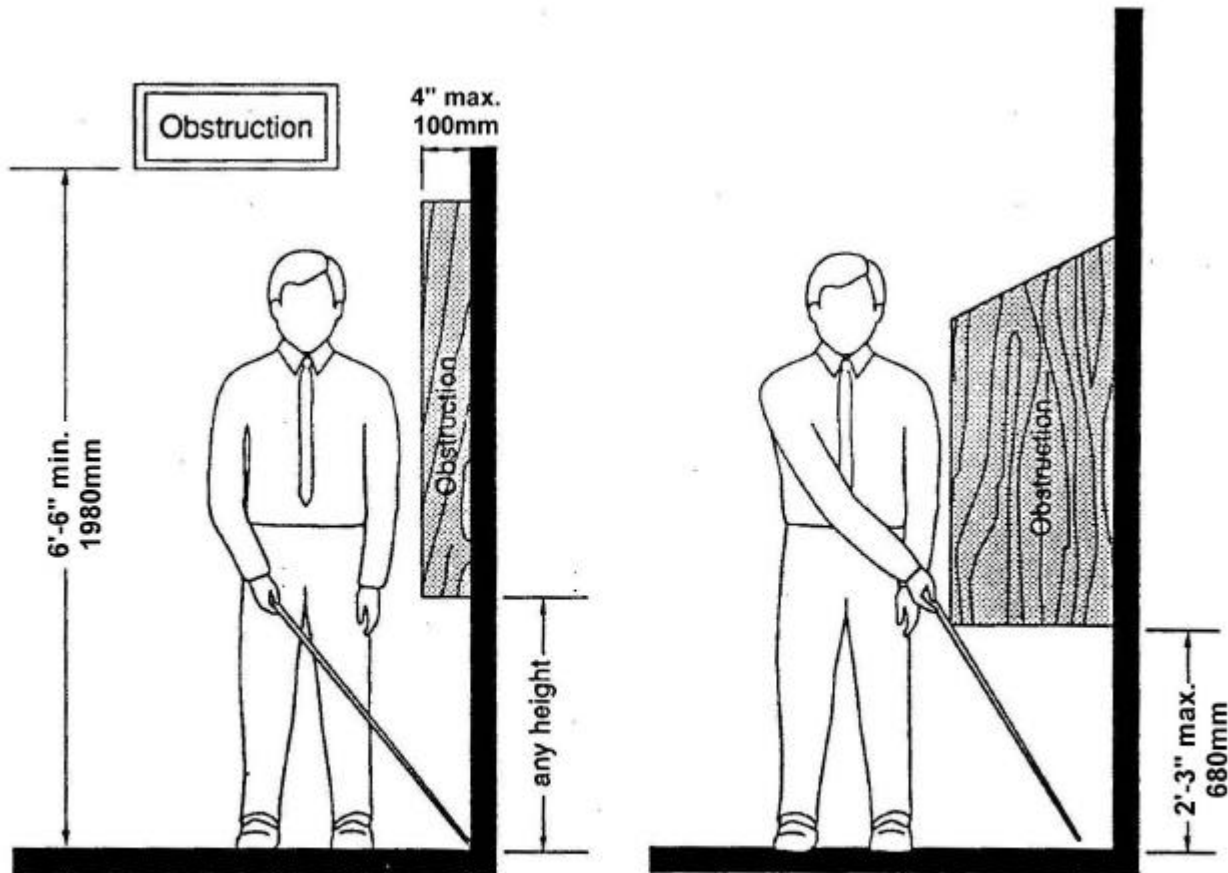


**NOTE:** The automatic door reopening device is activated if an object passes through either line A or line B. Line A and line B represent the vertical locations of the door reopening device not requiring contact.

**Elevator Entrances**



B.5.6 and B.5.7

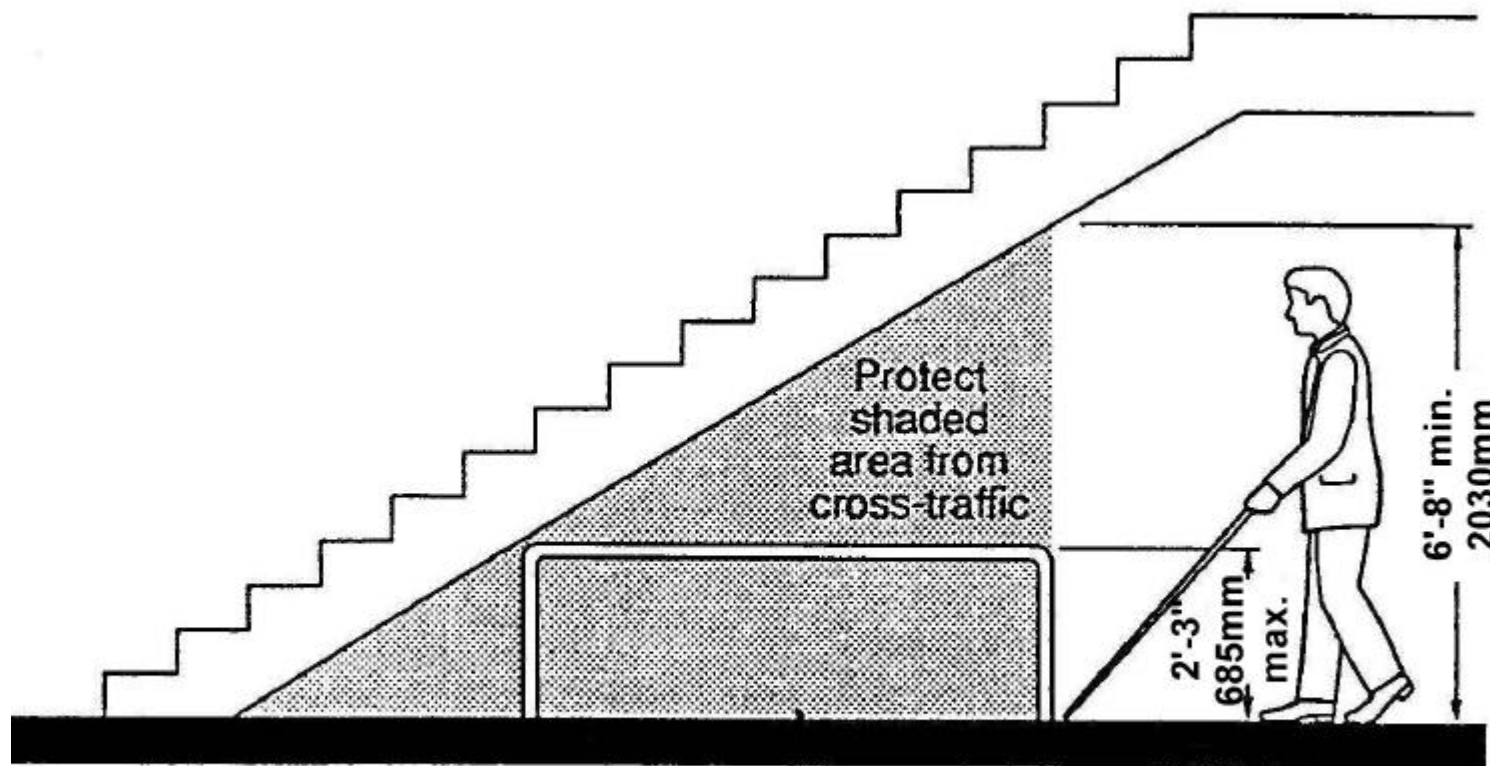


**Limits of Protruding Objects**

"With the permission of Canadian Standards Association, material is reproduced from CSA Standard CAN/CSA-B651-95 (R2001), Barrier-Free Design, which is copyrighted by Canadian Standards Association, 178 Rexdale Blvd., Toronto, Ontario, M9W 1R3. While use of this material has been authorized Csa shall not be responsible for the manner in which the information is presented, nor for any interpretation thereof."



**B.5.8**



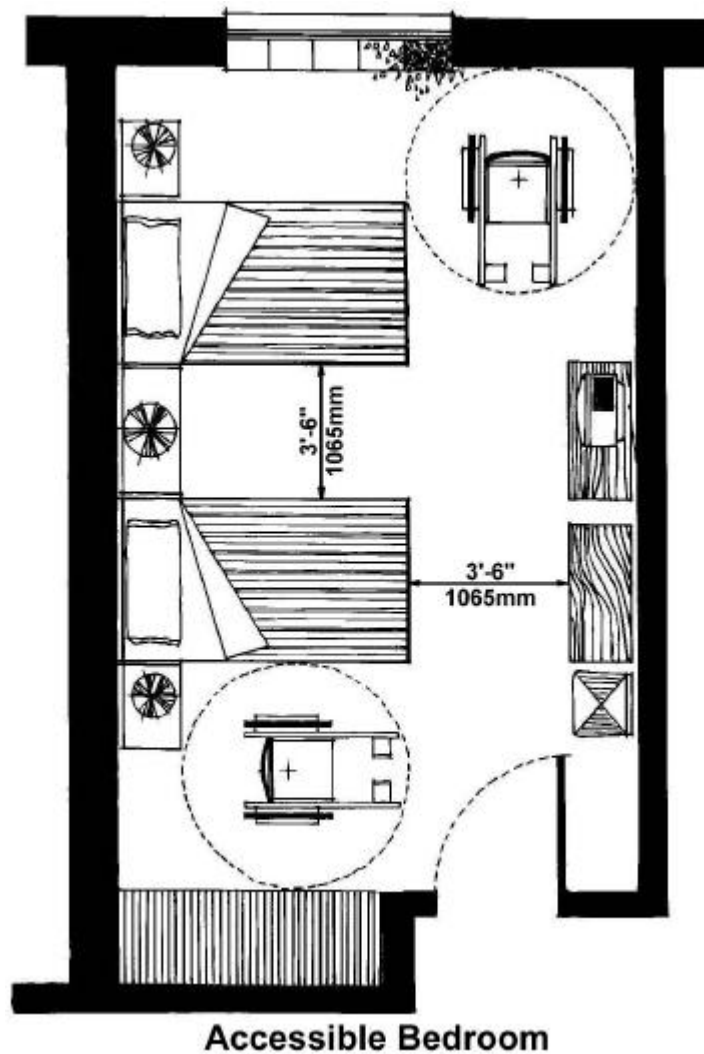
**Overhead Hazards**

"With the permission of Canadian Standards Association, material is reproduced from CSA Standard CAN/CSA-B651-95 (R2001), Barrier-Free Design, which is copyrighted by Canadian Standards Association, 178 Rexdale Blvd., Toronto, Ontario, M9W 1R3. While use of this material has been authorized Csa shall not be responsible for the manner in which the information is presented, nor for any interpretation thereof."



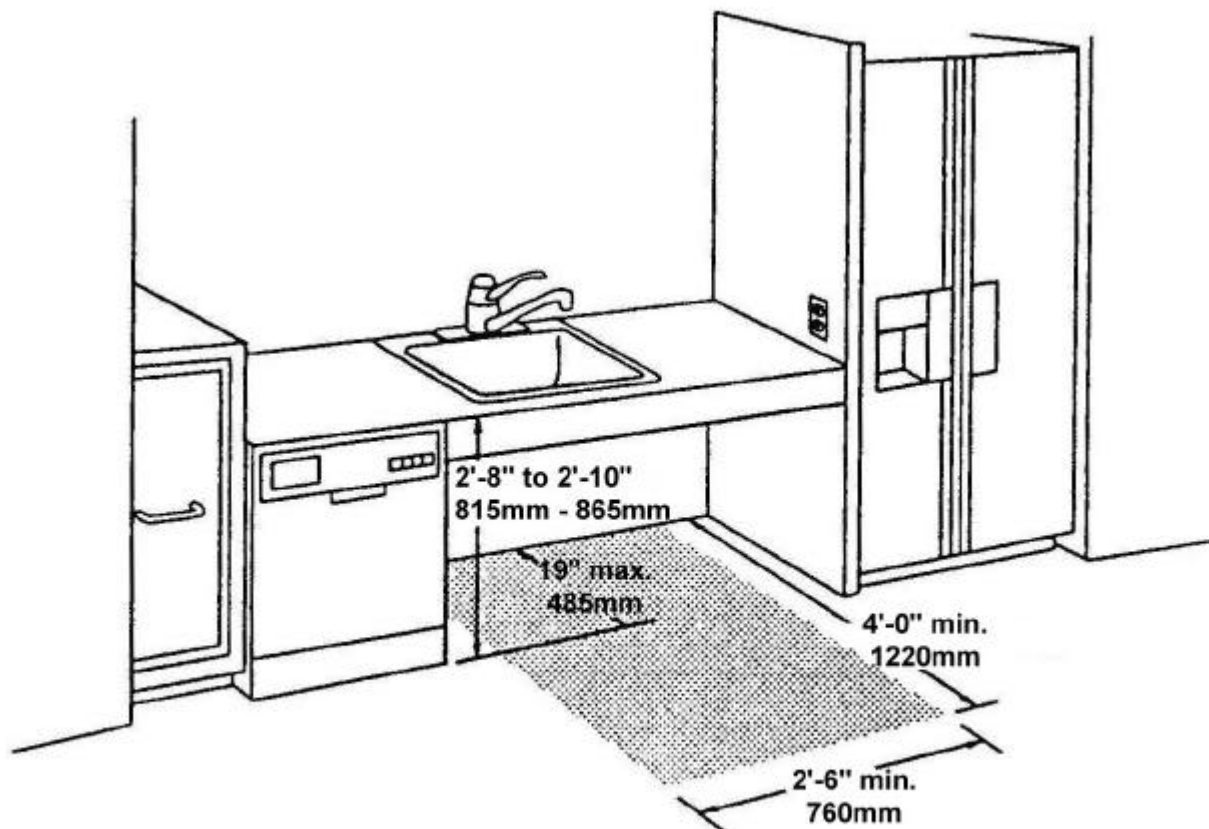
**B.7.5 & B.7.6**

*Note: this is only relevant if its part of a larger suite.*





**B.7.7 & B.7.9**



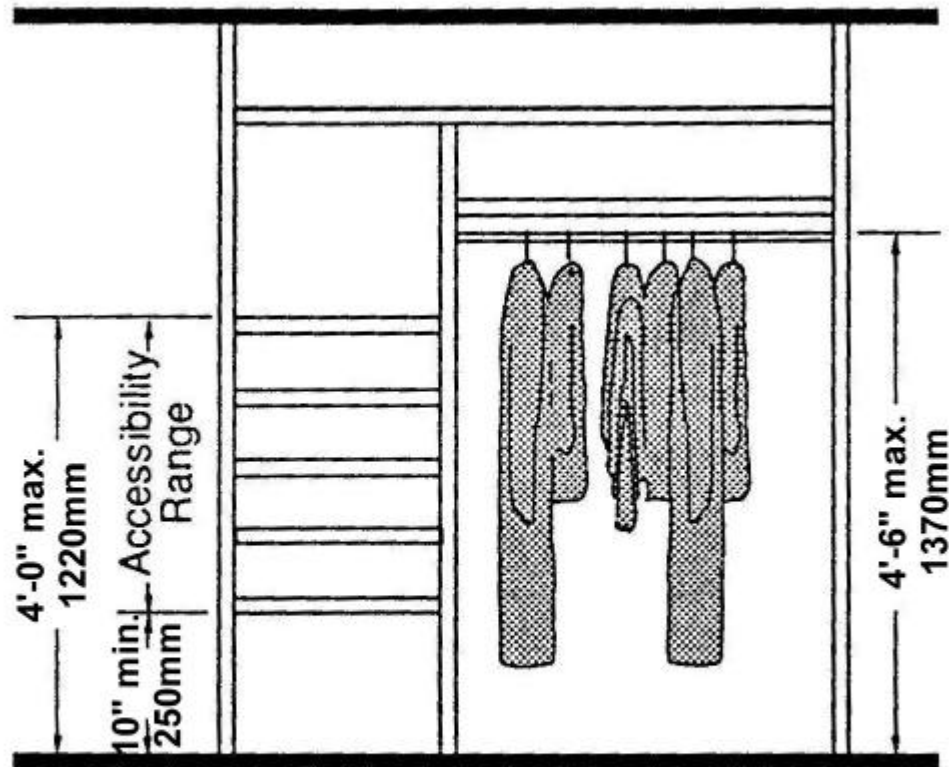
**Accessible Kitchenette Area**

"With the permission of Canadian Standards Association, material is reproduced from CSA Standard CAN/CSA-B651-95 (R2001), Barrier-Free Design, which is copyrighted by Canadian Standards Association, 178 Rexdale Blvd., Toronto, Ontario, M9W 1R3. While use of this material has been authorized Csa shall not be responsible for the manner in which the information is presented, nor for any interpretation thereof."





**B.7.10**

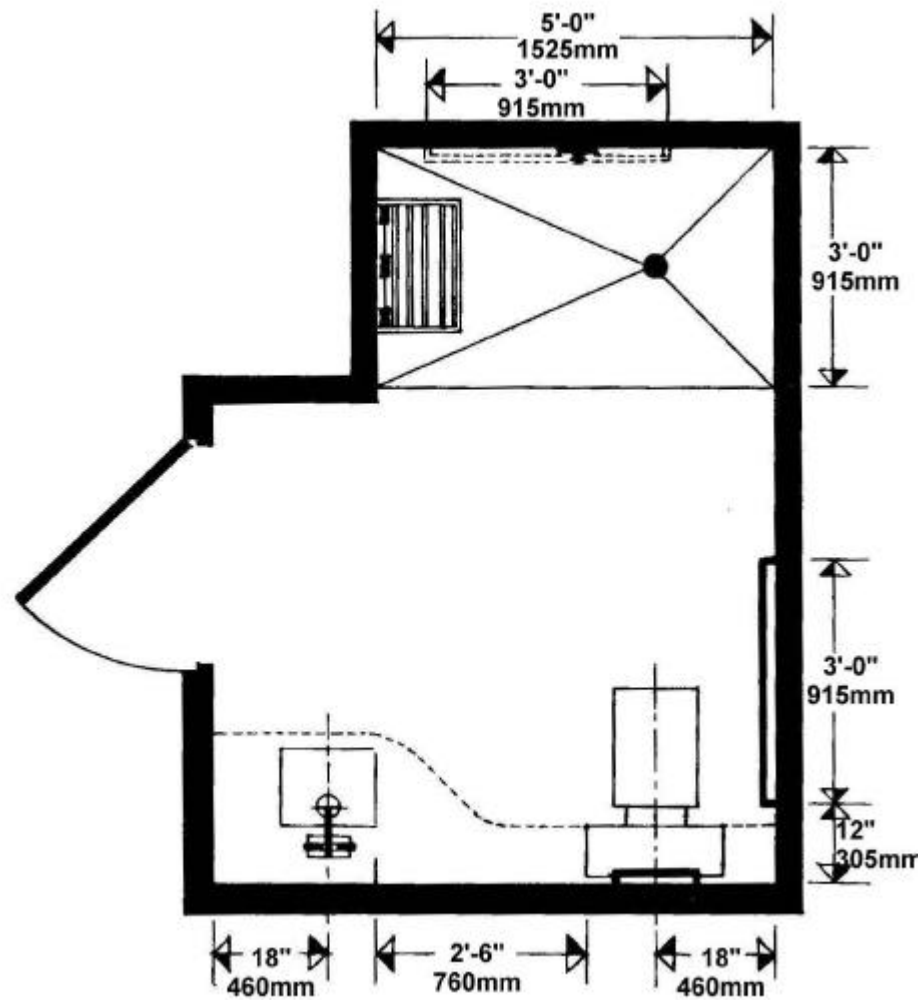


**Clothes Storage**

"With the permission of Canadian Standards Association, material is reproduced from CSA Standard CAN/CSA-B651-95 (R2001), Barrier-Free Design, which is copyrighted by Canadian Standards Association, 178 Rexdale Blvd., Toronto, Ontario, M9W 1R3. While use of this material has been authorized Csa shall not be responsible for the manner in which the information is presented, nor for any interpretation thereof."

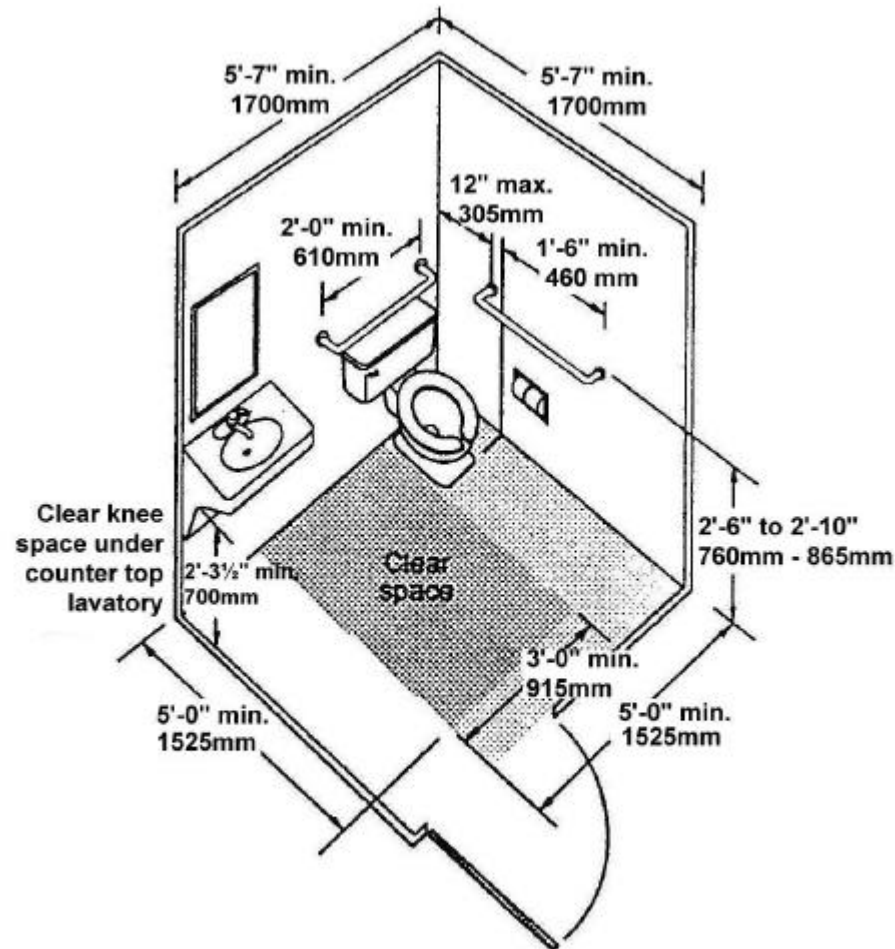


B.8.1





B.8.4 and B.8.5

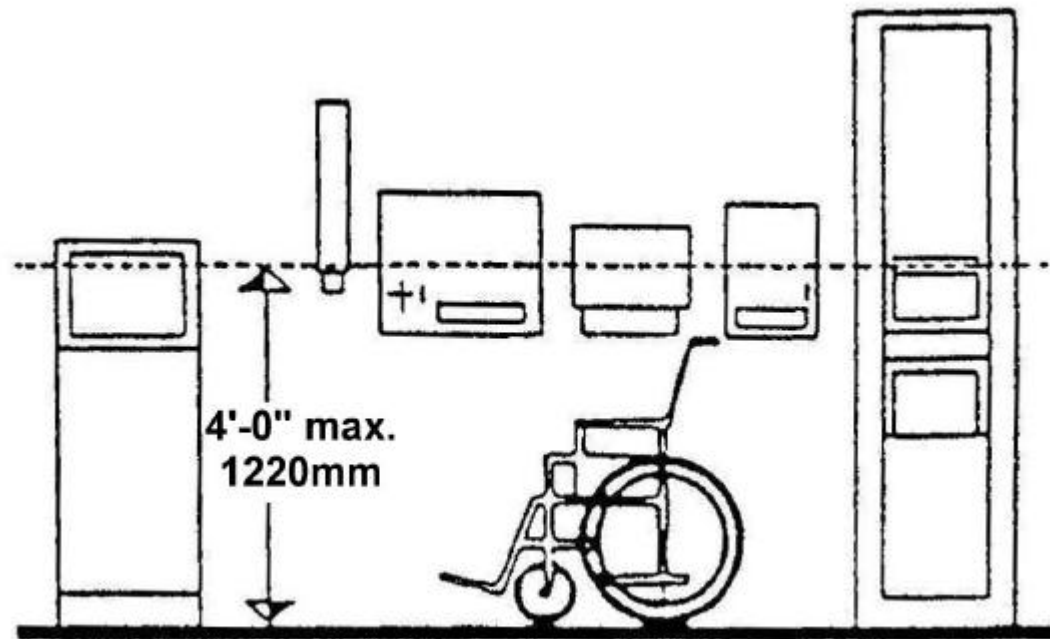


**Sample Layout for an Individual Washroom**

"With the permission of Canadian Standards Association, material is reproduced from CSA Standard CAN/CSA-B651-95 (R2001), Barrier-Free Design, which is copyrighted by Canadian Standards Association, 178 Rexdale Blvd., Toronto, Ontario, M9W 1R3. While use of this material has been authorized Csa shall not be responsible for the manner in which the information is presented, nor for any interpretation thereof."



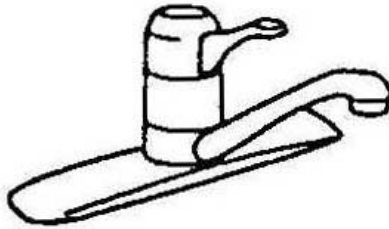
**B.8.7**



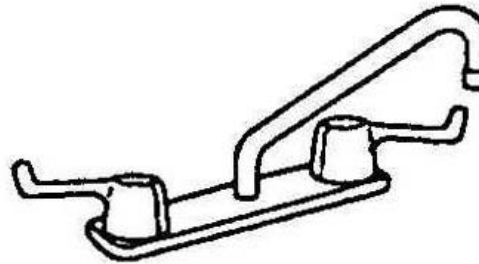
**Washroom Accessories**



B.8.11



**Single Lever  
Handle**



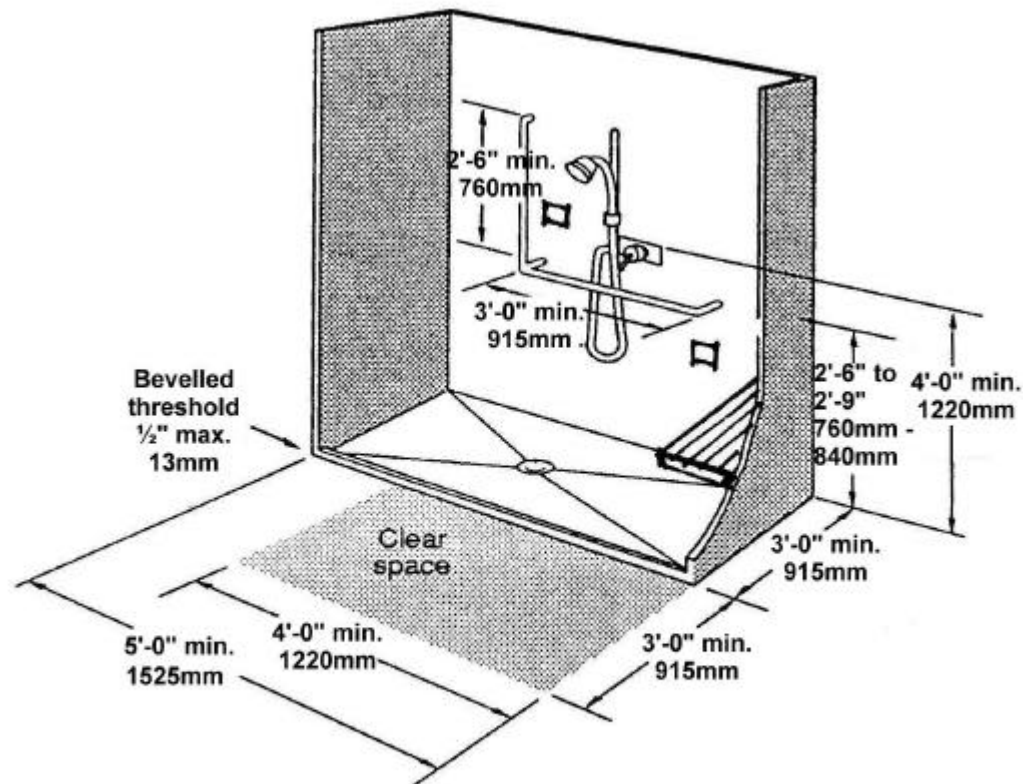
**Blade Handles**

## **Faucets**

"With the permission of Canadian Standards Association, material is reproduced from CSA Standard CAN/CSA-B651-95 (R2001), Barrier-Free Design, which is copyrighted by Canadian Standards Association, 178 Rexdale Blvd., Toronto, Ontario, M9W 1R3. While use of this material has been authorized Csa shall not be responsible for the manner in which the information is presented, nor for any interpretation thereof."



**B.9.1 & B.9.6**

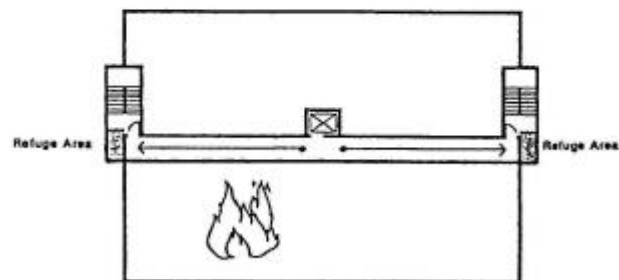
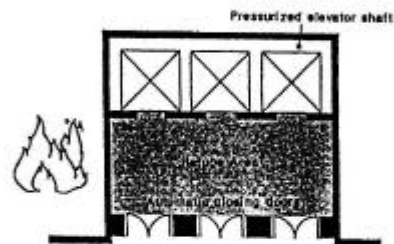
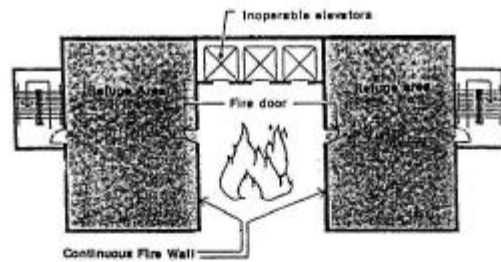


**Roll-In Shower Stall**

"With the permission of Canadian Standards Association, material is reproduced from CSA Standard CAN/CSA-B651-95 (R2001), Barrier-Free Design, which is copyrighted by Canadian Standards Association, 178 Rexdale Blvd., Toronto, Ontario, M9W 1R3. While use of this material has been authorized Csa shall not be responsible for the manner in which the information is presented, nor for any interpretation thereof."



**B.14.4**



**Safe Holding (Refuge) Areas**



B.15.2



**Signs Incorporating the International  
Symbol of Access**





B.15.3



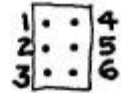
**Signs for assistive listening devices**



B.15.4

## Braille Signage

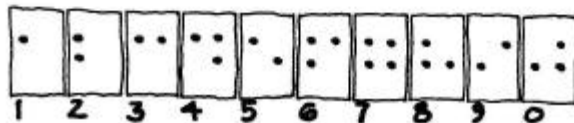
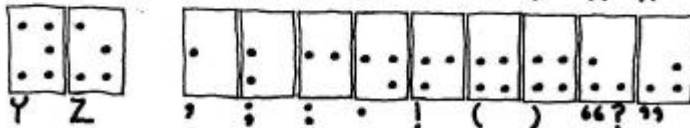
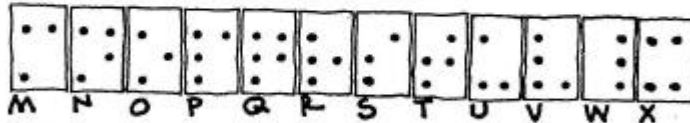
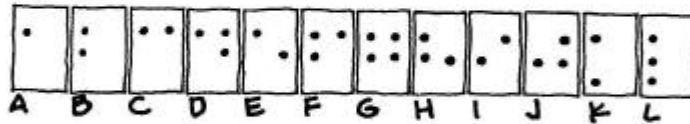
BRaille 'CELL'  
ALL BRAILLE LETTERS AND  
NUMBERS ARE MADE USING  
DOTS ARRANGED IN THE  
STANDARD 'CELL' DOTS  
NUMBERED FOR REFERENCE



CAPITAL SIGN  
PLACED IN FRONT OF ANY  
LETTER INDICATES A  
CAPITAL LETTER



NUMBER SIGN  
PLACED BEFORE A NUMBER OR  
GROUP OF NUMBERS INDICATES  
THAT NUMBERS FOLLOW  
(SOME NUMBERS DUPLICATE  
LETTERS)





B.15.6

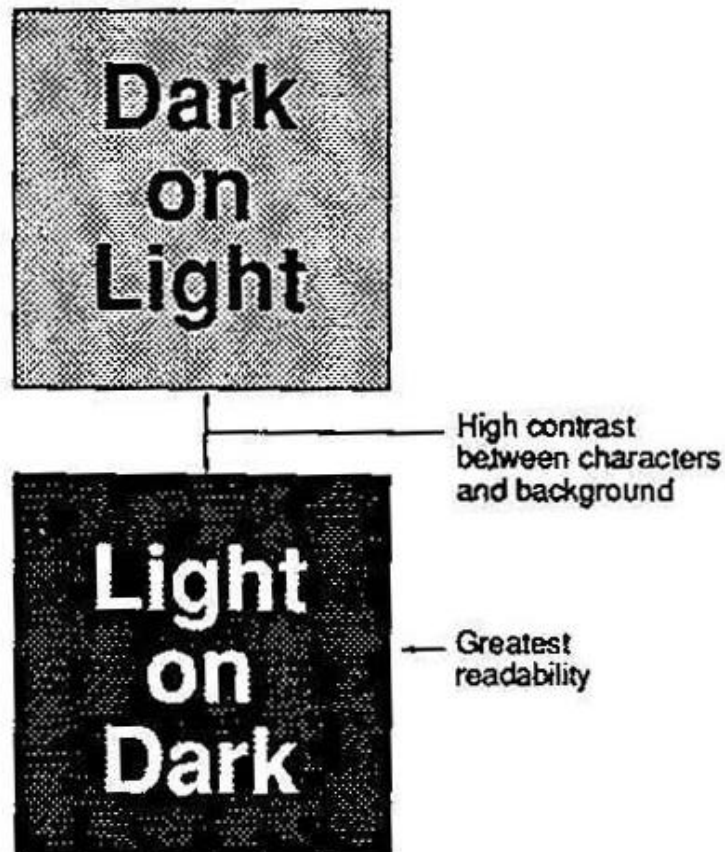


**Standard  
Pictograms**



B.15.7

## Lettering Contrast

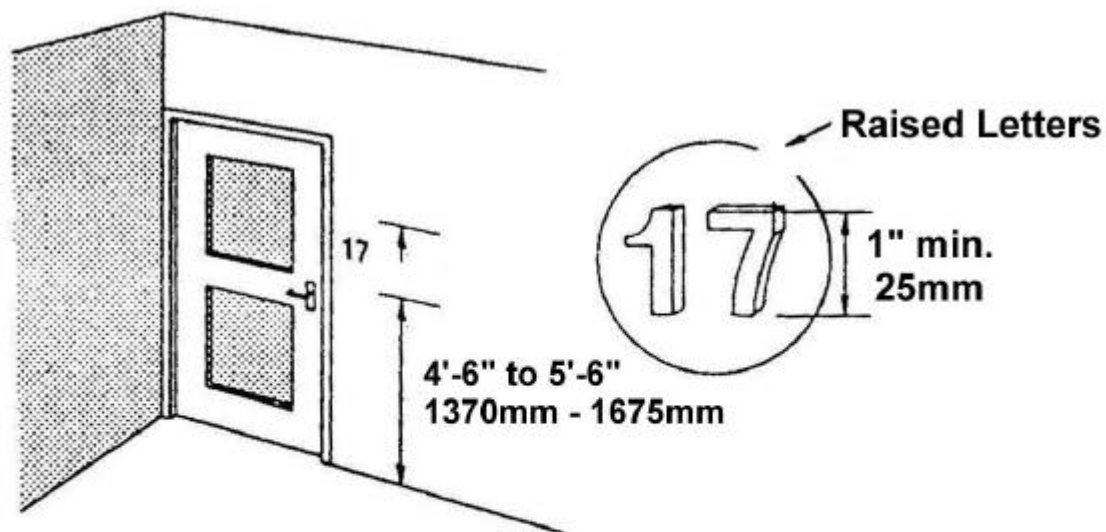


### Legibility of Printed Characters

"With the permission of Canadian Standards Association, material is reproduced from CSA Standard CAN/CSA-B651-95 (R2001), Barrier-Free Design, which is copyrighted by Canadian Standards Association, 178 Rexdale Blvd., Toronto, Ontario, M9W 1R3. While use of this material has been authorized Csa shall not be responsible for the manner in which the information is presented, nor for any interpretation thereof."



**B.15.14**



**Lettering Size and Location**

"With the permission of Canadian Standards Association, material is reproduced from CSA Standard CAN/CSA-B651-95 (R2001), Barrier-Free Design, which is copyrighted by Canadian Standards Association, 178 Rexdale Blvd., Toronto, Ontario, M9W 1R3. While use of this material has been authorized Csa shall not be responsible for the manner in which the information is presented, nor for any interpretation thereof."