



# Greater Toronto Airports Authority Memorandum

**General Release**

**To :**  
**From :** Faraz Salim  
**Date :** October 3, 2014  
**RE:** AVIATION ACTIVITY REPORT – **July, 2014**

---

---

The July 2014 Aviation Activity Report is now available for your information and reference.

Overall passenger traffic at Toronto Pearson in July was 3.80 million, representing an increase of 8.8% compared to July 2013. For YTD 2014, passenger numbers were 22.2 million, an increase of 6.2% over 2013.

All three sectors, DOM/TB/INT, showed continuing robust traffic growth of 7.7%/9.3%/10.1% respectively in July. All three sectors have shown YTD growth in excess of 5.7%.

A total of 39,951 aircraft arrivals and departures operated at Toronto Pearson in July, representing a +1.8% change from July 2013 (YTD 2014 of -0.9% and first consecutive monthly gain in 2014). For **arrivals (>19 tonnes, ATB)**, seat growth was 6.8% for July / 3.8% YTD and MTOW 7.7%/5.0% respectively.

The following table shows the July and YTD 2014 vs. 2013 growth for key activities (**All Terminals, all weights**):

Activity	Passenger	Arr. Seats	Arr. MTOW	Movements
July	8.8%	6.6%	7.2%	+1.8%
YTD 2014	6.2%	3.9%	4.4%	-0.9%

**Original signed by**

**Faraz Salim**

Manager – Business Optimization  
Aviation Services  
416-776-3858 cell 647-382-1769  
fax 416-776-4168  
faraz.salim@gtaa.com



## **TORONTO PEARSON AVIATION ACTIVITY REPORT**

**July, 2014**

**GENERAL RELEASE R E P O R T**

Business Optimization

**TORONTO PEARSON INTERNATIONAL AIRPORT  
AIRPORT ACTIVITY REPORT  
REVENUE AND NON REVENUE PASSENGERS**

**July-14**

4-Sep-14

**(A)**

Actual  
13/12

Actual  
14/13

SECTOR	2014	2013	% AAGR	SECTOR	2014	2013	% AAGR
<b>TERMINAL ONE</b>				<b>TOTAL AIRPORT</b>			
DOM	1,117,608	1,026,067	8.9%	DOM	1,605,643	1,491,084	7.68%
YTD	6,099,334	5,728,714	6.5%	YTD	8,573,358	8,074,673	6.18%
12 Mth Total	10,560,572	9,972,891	5.9%	12 Mth Total	14,884,130	14,046,429	5.96%
TBR	624,674	579,630	7.8%	TBR	936,987	857,435	9.28%
YTD	4,238,781	4,029,371	5.2%	YTD	6,112,272	5,780,183	5.75%
12 Mth Total	7,034,755	6,791,915	3.6%	12 Mth Total	10,171,836	9,745,189	4.38%
INT'L	741,681	659,994	12.4%	INT'L	1,254,606	1,139,994	10.05%
YTD	4,465,513	4,145,352	7.7%	YTD	7,483,534	7,025,926	6.51%
12 Mth Total	7,393,258	6,953,002	6.3%	12 Mth Total	12,342,154	11,682,111	5.65%
TOTAL	2,483,963	2,265,691	9.6%	TOTAL	3,797,236	3,488,513	8.85%
YTD	14,803,628	13,903,437	6.5%	YTD	22,169,164	20,880,782	6.17%
12 Mth Total	24,988,585	23,717,808	5.4%	12 Mth Total	37,398,120	35,473,729	5.42%
<b>TERMINAL THREE</b>				<b>Passenger ('000)</b>			
DOM	488,035	465,017	4.9%				
YTD	2,474,024	2,345,959	5.5%				
12 Mth Total	4,323,558	4,073,538	6.1%				
TBR	312,313	277,805	12.4%				
YTD	1,873,491	1,750,812	7.0%				
12 Mth Total	3,137,081	2,953,274	6.2%				
INT'L	512,925	480,000	6.9%				
YTD	3,018,021	2,880,574	4.8%				
12 Mth Total	4,948,896	4,729,109	4.6%				
TOTAL	1,313,273	1,222,822	7.4%				
YTD	7,365,536	6,977,345	5.6%				
12 Mth Total	12,409,535	11,755,921	5.6%				

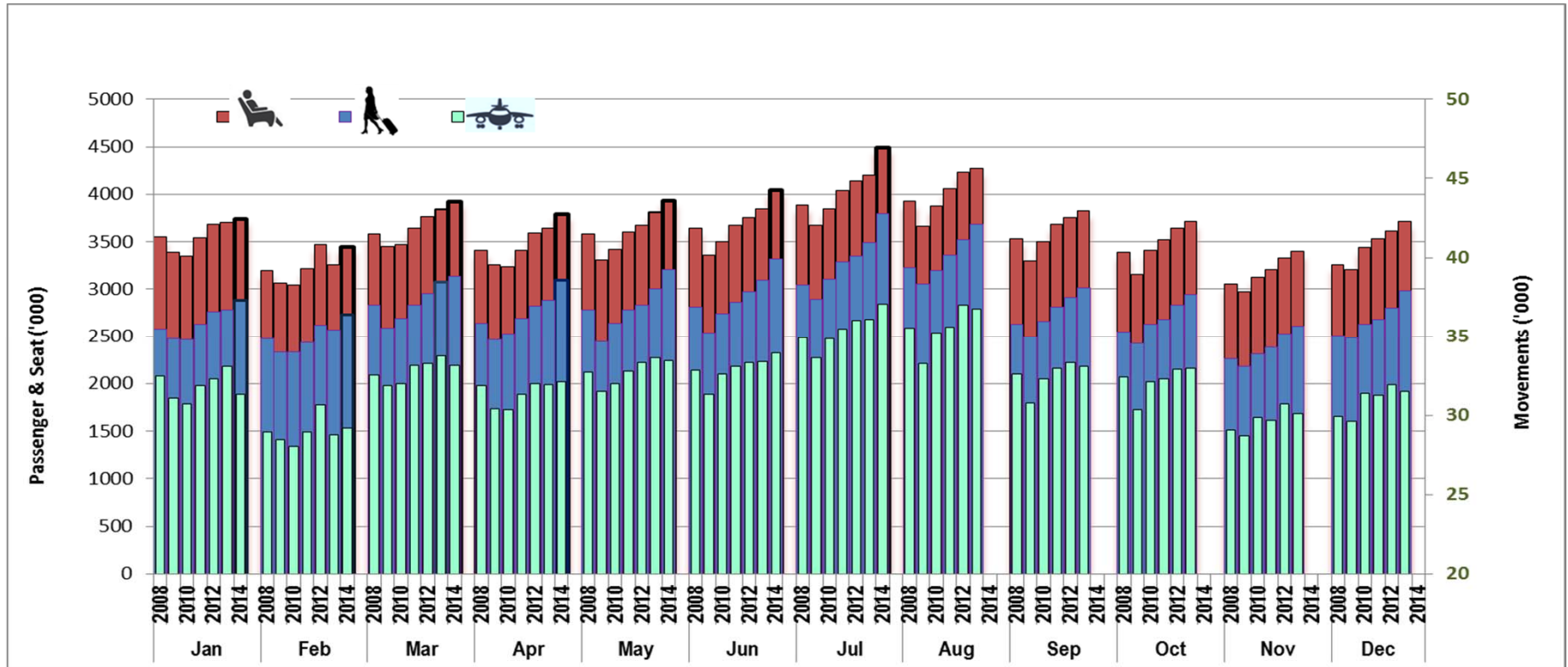
**Notes:** Above data is preliminary and subject to subsequent adjustments as new information is obtained.

DOM - Domestic travel within Canada  
TBR - Transborder to U.S. only  
INT'L - International countries excluding the USA

12 Month Period Aug-13 to Jul-14

T2 Closed in Jan 2007 - Traffic transferred to T1.

## TORONTO PEARSON TOTAL TERMINAL TRAFFIC 2008-2014



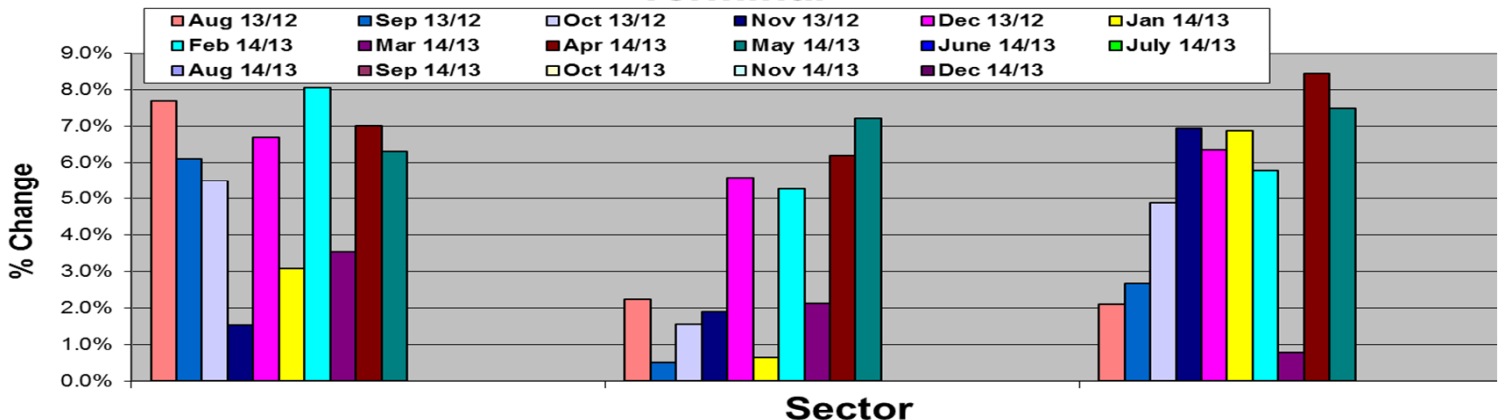
**Notes:** Above data is preliminary and subject to subsequent adjustments as new information is obtained.

TORONTO PEARSON INTERNATIONAL AIRPORT								
2013								
TOTAL PASSENGERS								
MONTH	DOM.	13/12	T/B	13/12	INT'L	13/12	Total	13/12
JAN	T1	733,758		555,806		600,484	1,890,048	
	T3	272,505		228,121		390,751	891,377	
Ttl JAN		1,006,263	2.6%	783,927	7.0%	991,235	2,781,425	0.6%
FEB	T1	672,292		537,081		523,857	1,733,230	
	T3	251,817		220,169		360,316	832,302	
Ttl FEB		924,109	-1.8%	757,250	3.6%	884,173	2,565,532	-2.1%
Mar	T1	768,013		670,242		634,533	2,072,788	
	T3	290,920		267,193		443,380	1,001,493	
Ttl Mar		1,058,933	5.6%	937,435	8.7%	1,077,913	3,074,281	4.2%
Apr	T1	788,656		594,580		547,515	1,930,751	
	T3	295,773		246,046		409,037	950,856	
Ttl Apr		1,084,429	5.3%	840,626	5.2%	956,552	2,881,607	2.0%
May	T1	846,488		549,529		577,889	1,973,906	
	T3	379,551		265,915		379,439	1,024,905	
Ttl May		1,226,039	6.7%	815,444	6.5%	957,328	2,998,811	5.9%
June	T1	893,440		542,503		601,080	2,037,023	
	T3	390,376		245,854		417,360	1,053,590	
Ttl June		1,283,816	7.2%	788,357	1.8%	1,018,440	3,090,613	4.0%
July	T1	1,026,067		579,630		659,994	2,265,691	
	T3	465,017		277,805		480,000	1,222,822	
Ttl July		1,491,084	8.6%	857,435	2.8%	1,139,994	3,488,513	4.1%
Aug	T1	1,088,621		617,225		696,354	2,402,200	
	T3	480,739		301,445		496,238	1,278,422	
Ttl Aug		1,569,360	7.7%	918,670	2.2%	1,192,592	3,680,622	4.5%
Sep	T1	889,812		522,396		611,114	2,023,322	
	T3	373,648		229,645		384,665	987,958	
Ttl Sep		1,263,460	6.1%	752,041	0.5%	995,779	3,011,280	3.5%
Oct	T1	893,142		550,983		535,147	1,979,272	
	T3	377,527		244,734		345,585	967,846	
Ttl Oct		1,270,669	5.5%	795,717	1.6%	880,732	2,947,118	4.2%
Nov	T1	764,430		515,580		475,857	1,755,867	
	T3	294,055		238,516		322,248	854,819	
Ttl Nov		1,058,485	1.5%	754,096	1.9%	798,105	2,610,686	3.2%
Dec	T1	825,233		589,790		609,273	2,024,296	
	T3	323,565		249,446		381,943	954,954	
Ttl Dec		1,148,798	6.7%	839,236	5.6%	991,216	2,979,250	6.3%
Grand Ttl	T1	10,189,952		6,825,345		7,073,097	24,088,394	
	T3	4,195,493		3,014,402		4,811,449	12,021,344	
		14,385,445	5.4%	9,839,747	4.0%	11,884,546	36,109,738	3.4%

TORONTO PEARSON INTERNATIONAL AIRPORT								
2014								
TOTAL PASSENGERS								
DOM.	14/13	T/B	14/13	INT'L	14/13	Total	14/13	
741,387		565,449		641,950		1,948,786		
295,858		223,514		417,489		936,861		
1,037,245	3.1%	788,963	0.6%	1,059,439	6.9%	2,885,647	3.7%	
721,764		571,347		558,115		1,851,226		
276,840		225,444		377,543		879,827		
998,604	8.1%	796,791	5.3%	935,658	5.8%	2,731,053	6.5%	
798,444		687,511		642,335		2,128,290		
297,832		269,872		443,952		1,011,656		
1,096,276	3.5%	957,383	2.1%	1,086,287	0.8%	3,139,946	2.1%	
835,465		627,202		611,639		2,074,306		
325,015		265,415		425,579		1,016,009		
1,160,480	7.0%	892,617	6.2%	1,037,218	8.4%	3,090,315	7.2%	
912,992		590,074		625,998		2,129,064		
399,619		284,058		402,904		1,077,581		
1,303,611	6.3%	874,132	7.2%	1,028,902	7.5%	3,206,645	6.9%	
971,674		572,524		643,795		2,187,993		
399,825		292,875		437,629		1,130,329		
1,371,499	6.8%	865,399	9.8%	1,081,424	6.2%	3,318,322	7.4%	
1,117,608		624,674		741,681		2,483,963		
488,035		312,313		512,925		1,313,273		
1,605,643	7.7%	936,987	9.3%	1,254,606	10.1%	3,797,236	8.8%	
0		0		0		0		
0		0		0		0		
0	0.0%	0	0.0%	0	0.0%	0	0.0%	
0		0		0		0		
0		0		0		0		
0	0.0%	0	0.0%	0	0.0%	0	0.0%	
0		0		0		0		
0		0		0		0		
0	0.0%	0	0.0%	0	0.0%	0	0.0%	
6,099,334		4,238,781		4,465,513		14,803,628		
2,474,024		1,873,491		3,018,021		7,365,536		
8,573,358	6.2%	6,112,272	5.7%	7,483,534	6.5%	22,169,164	6.2%	

Notes: Above data is preliminary and subject to subsequent adjustments as new information is obtained.

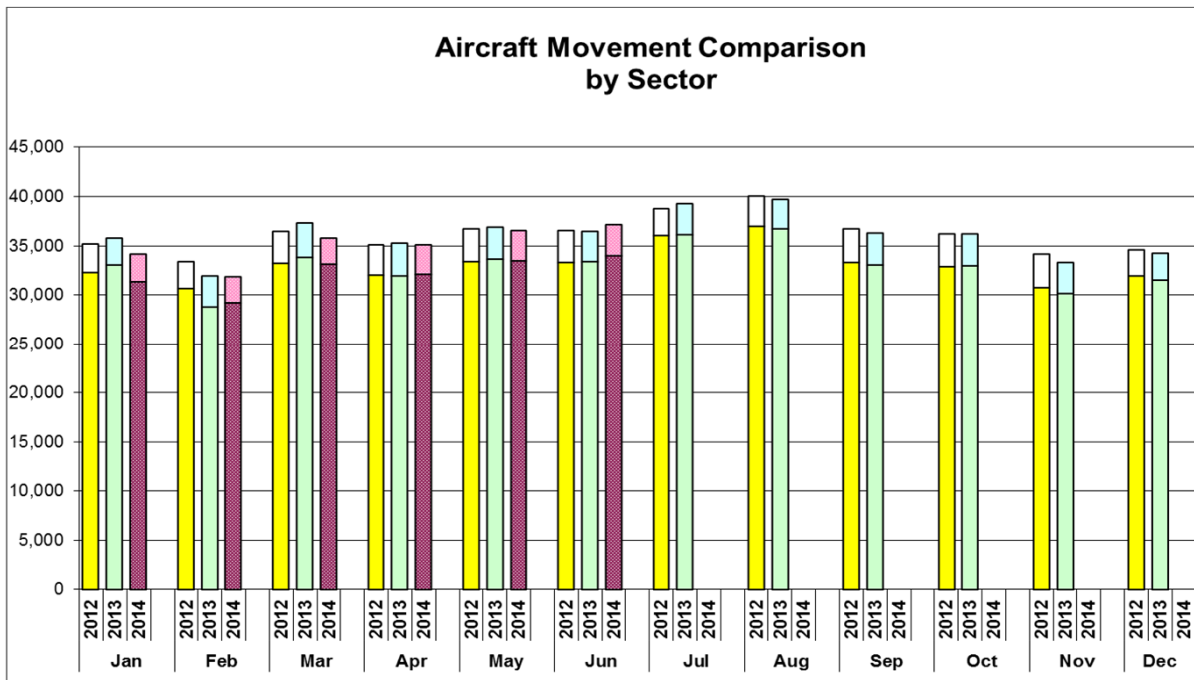
### Annual Percentage Changes by month and sector All Terminal



## PEARSON AIRCRAFT MOVEMENT (Actual and Previous Year comparison)

4-Sep-14												
Month	AIR CARRIER								Non Terminal	Chg	GRAND TOTAL	Chg
	DOM	Chg	TBR	Chg	INT	Chg	TOTAL	Chg				
Jan-14	12,637	-0.7%	12,728	-13.4%	5,933	5.1%	31,298	-5.4%	2,815	4.0%	34,113	-4.7%
Feb-14	11,845	8.1%	12,036	-5.4%	5,332	4.7%	29,213	1.5%	2,655	-14.7%	31,868	-0.1%
Mar-14	12,948	1.1%	14,171	-5.6%	6,017	1.1%	33,136	-1.9%	2,675	-24.9%	35,811	-4.1%
Apr-14	13,027	3.3%	13,520	-3.5%	5,557	4.4%	32,104	0.5%	3,029	-8.0%	35,133	-0.3%
May-14	14,975	2.0%	13,265	-5.3%	5,226	5.7%	33,466	-0.5%	3,086	-5.5%	36,552	-0.9%
Jun-14	15,401	2.9%	13,128	-1.3%	5,423	5.0%	33,952	1.6%	3,160	3.0%	37,112	1.7%
Jul-14	-		-		-		-		-		-	
Aug-14	-		-		-		-		-		-	
Sep-14	-		-		-		-		-		-	
Oct-14	-		-		-		-		-		-	
Nov-14	-		-		-		-		-		-	
Dec-14	-		-		-		-		-		-	
<b>2014</b>	<b>80,833</b>	<b>2.7%</b>	<b>78,848</b>	<b>-5.9%</b>	<b>33,488</b>	<b>4.2%</b>	<b>193,169</b>	<b>-0.7%</b>	<b>17,420</b>	<b>-8.4%</b>	<b>210,589</b>	<b>-1.4%</b>

Chg = Previous Year Change for the month





## Airport Activity Statistics Report

### Events

- 25 Gates on Pier Hammerhead F of T1 opened Jan 31, 2007
- T2 ceased operation January 30, 2007 at 9:30 pm.(East Hold continues to operate from T1)
- The New T1 1 opened 10 new gates November 1, 2005
- The New T1 1 opened on April 6, 2004 and T1Old ceased operating on the same day.
- Passenger comparisons shown in the Passengers by Terminal reflect T1Old vs. T1 (New) within the T1 table.
- Passengers using the IFT (Infield Terminal) previously processed at T1Old are now processed at T1 and are included in the same comparison table

### Moves

- November 2010 – Continental moved to T1
- May 16, 2008 – Air India moved to T1
- May 2, 2008 – Icelandair begins operations at T1
- March 29, 2008 – US Air moved to T1
- June 22, 2005 - Westjet moved back to T3
- April 18, 2004 - Westjet moves from T3 to T2
- April 6, 2004 - Air Canada/Jazz Domestic and International operations transfer from T1 (Old) and T2 to T1 (New) along with other Star Alliance and other T1 (Old) carriers.
- June 2, 2003 - Tango moved from T3 to T2 and is a fare option for Air Canada's Domestic and some Transborder activities
- April - June 2000 - Canadian Airlines and its regional affiliates transferred Domestic and Transborder operations to T2 and International services to T1 as it merged with Air Canada. Carriers which had been operating in T1 transferred to T3 including Delta, USAir, Continental, and several international carriers. T2 International Operations moved to T1 (ACA, DLH, MXA, etc.)

### Traffic Impacts

- **June 13 – 16, 2011**, - Air Canada labor strike
- **June 25 – 27, 2010**, - G8/20 Leaders Summit.
- **January 31, 2010**, - NWA ceased operation to merged with Delta Airlines
- **December 25, 2009**, – Failed terrorist attempt on Delta flight from Amsterdam to Detroit leading to additional security restrictions on transborder air travel
- **April, 2009**, - H1N1 (Swine Flu) virus in Mexico. Resulted travel restriction around the world. Travel advisory to Canadians for Mexico issued
- **August 9, 2006**, - British and US airlines threatened – all carry-on screened
- Major thunderstorms hit GTA, **August, 2005**
- **August 2, 2005** – Air France A340 crashes. No fatalities
- **March 11, 2005** - Jetsgo declared protection from bankruptcy
- **April 2004** - WestJet increased operations at Toronto and cut back some service at Hamilton Airport
- Major blackout in Ontario and eastern seaboard of the USA – **August 14-16, 2003**
- World Health Organization (WHO) imposes travel restriction to the Toronto area due to Severe Acute Respiratory Syndromes (SARS) April, 2003 until **July, 2003**
- War in Iraq – started **March 20, 2003** Occupation officially ended on **Dec 15, 2011**
- Major ice storms in Toronto and Eastern Canada - **April 3 - 4, 2003**
- Air Canada files for bankruptcy protection – **April 1, 2003**. (Exited **Oct 1, 2004**)