



Greater Toronto Airports Authority Memorandum

General Release

To :

From : Faraz Salim

Date : May 23, 2014

RE: AVIATION ACTIVITY REPORT – **March, 2014**

The March 2014 Aviation Activity Report is now available for your information and reference.

Overall passenger traffic at Toronto Pearson in March was 3.14 million, representing an increase of 2.2% compared to March 2013 and a much more modest growth than we saw in the first two months of 2014. For the year 2014, passenger numbers were 8.76 million, an increase of 4.0% over 2013.

Domestic and Trans-border sectors showed continuing traffic growth of 3.5% and 2.1% respectively in March, while the International sector was a slower at 0.8%. The International Sector has now shown a positive growth in ten out of the last eleven months.

A total of 35,829 aircraft arrivals and departures operated at Toronto Pearson in March, representing a -4.0% change from March 2013 (Q1 2014 of -3.0%). For **arrivals (>19 tonnes)**, seat growth was 2.0% for March / 2.5% Q1 and MTOW 3.2%/4.0% respectively.

The following table shows the March and Q1 2014 vs. 2013 growth for key activities (**All Terminals, all weights**):

Activity	Passenger	Arr. Seats	Arr. MTOW	Movements
March	2.2%	2.2%	2.1%	-4.0%
Q1	4.0%	2.7%	3.2%	-3.0%

Original signed by

Faraz Salim

Manager – Business Optimization

Aviation Services

416-776-3858 cell 647-382-1769

fax 416-776-4168

faraz.salim@gtaa.com

**TORONTO PEARSON INTERNATIONAL AIRPORT
AIRPORT ACTIVITY REPORT
REVENUE AND NON REVENUE PASSENGERS**

				March-14					(B)	(A) / (B)
				Actual	As of: 28-Apr-14				BUDGET	Annual
				14/13	(A)		14/13			AAGR
SECTOR	2014	2013	% AAGR	SECTOR	2014	2013	% AAGR	2014		
TERMINAL ONE				TOTAL AIRPORT						
DOM	798,485	768,013	4.0%	DOM	1,096,317	1,058,933	3.53%	1,090,596	0.52%	
YTD	2,261,636	2,174,063	4.0%	YTD	3,132,166	2,989,305	4.78%	3,077,264	1.78%	
12 Mth Total	10,277,525	9,755,953	5.3%	12 Mth Total	14,528,306	13,710,692	5.96%	13,590,724	6.90%	
TBR	687,608	670,242	2.6%	TBR	957,480	937,435	2.14%	971,540	-1.45%	
YTD	1,824,404	1,763,129	3.5%	YTD	2,543,234	2,478,321	2.62%	2,569,173	-1.01%	
12 Mth Total	6,886,620	6,719,577	2.5%	12 Mth Total	9,904,660	9,616,750	2.99%	9,735,283	1.74%	
INT'L	642,520	634,533	1.3%	INT'L	1,086,775	1,077,913	0.82%	1,186,654	-8.42%	
YTD	1,842,585	1,758,874	4.8%	YTD	3,081,872	2,953,612	4.34%	3,245,871	-5.05%	
12 Mth Total	<u>7,156,808</u>	<u>6,946,632</u>	3.0%	12 Mth Total	<u>12,012,806</u>	<u>11,669,419</u>	2.94%	<u>12,866,972</u>	-6.64%	
TOTAL	2,128,613	2,072,788	2.7%	TOTAL	3,140,572	3,074,281	2.16%	3,248,790	-3.33%	
YTD	5,928,625	5,696,066	4.1%	YTD	8,757,272	8,421,238	3.99%	8,892,308	-1.52%	
12 Mth Total	<u>24,320,953</u>	<u>23,422,162</u>	3.8%	12 Mth Total	<u>36,445,772</u>	<u>34,996,861</u>	4.14%	<u>36,192,980</u>	0.70%	
TERMINAL THREE				Passenger ('000)						
DOM	297,832	290,920	2.4%							
YTD	870,530	815,242	6.8%							
12 Mth Total	4,250,781	3,954,739	7.5%							
TBR	269,872	267,193	1.0%							
YTD	718,830	715,192	0.5%							
12 Mth Total	3,018,040	2,897,173	4.2%							
INT'L	444,255	443,380	0.2%							
YTD	1,239,287	1,194,738	3.7%							
12 Mth Total	<u>4,855,998</u>	<u>4,722,787</u>	2.8%							
TOTAL	1,011,959	1,001,493	1.0%							
YTD	2,828,647	2,725,172	3.8%							
12 Mth Total	<u>12,124,819</u>	<u>11,574,699</u>	4.8%							

Notes: Above data is preliminary and subject to subsequent adjustments as new information is obtained.

DOM - Domestic travel within Canada

TBR - Transborder to U.S. only

INT'L - International countries excluding the USA

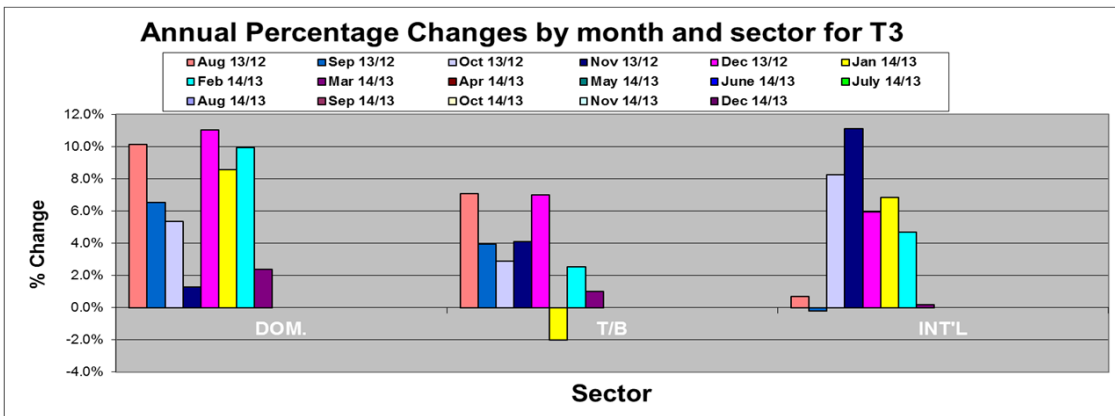
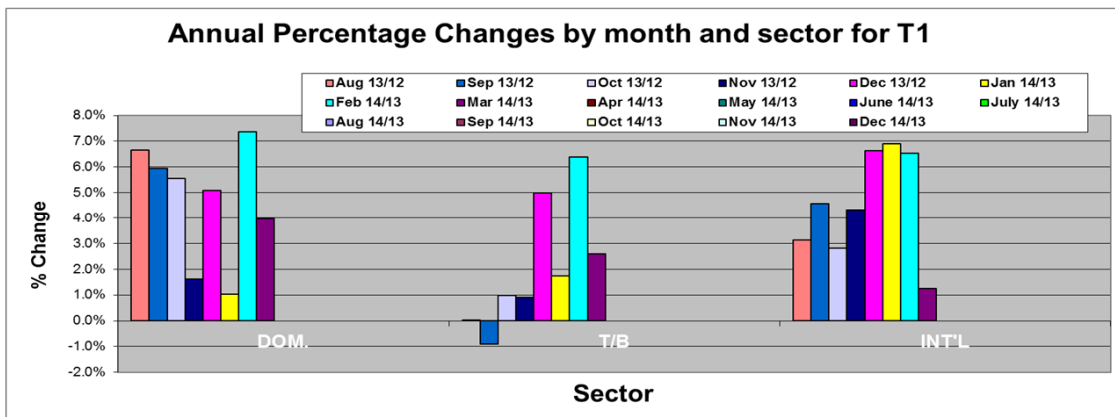
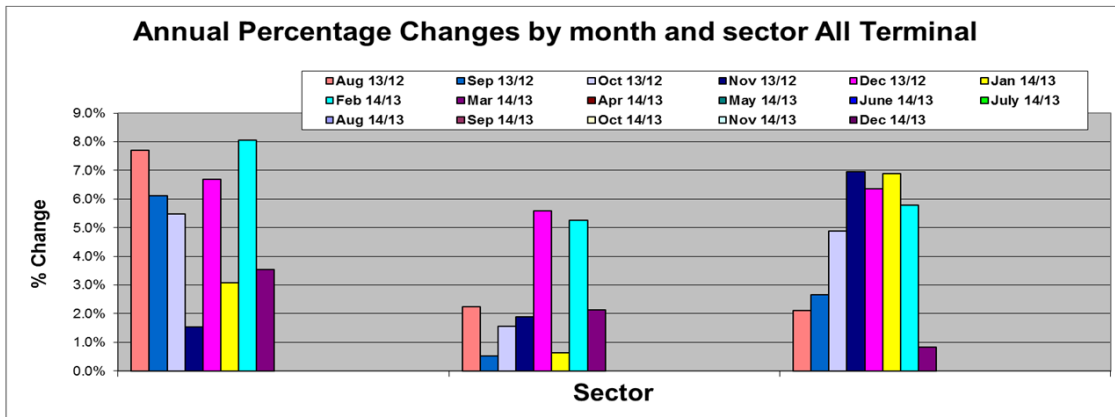
12 Month Period Apr-13 to Mar-14

T2 Closed in Jan 2007 - Traffic transferred to T1.

TORONTO PEARSON INTERNATIONAL AIRPORT									
2013									
TOTAL PASSENGERS									
MONTH		DOM.	13/12	T/B	13/12	INTL	13/12	Total	13/12
JAN	T1	733,758		555,806		600,484		1,890,048	
	T3	272,505		228,121		390,751		891,377	
Ttl JAN		1,006,263	2.6%	783,927	7%	991,235	-6%	2,781,425	1%
FEB	T1	672,292		537,081		523,857		1,733,230	
	T3	251,817		219,878		360,607		832,302	
Ttl FEB		924,109	-1.8%	756,959	3.5%	884,464	-6.8%	2,565,532	-2.1%
Mar	T1	768,013		670,242		634,533		2,072,788	
	T3	290,920		267,193		443,380		1,001,493	
Ttl Mar		1,058,933	5.6%	937,435	8.7%	1,077,913	-0.7%	3,074,281	4.2%
Apr	T1	788,656		594,580		547,515		1,930,751	
	T3	295,773		246,046		409,037		950,856	
Ttl Apr		1,084,429	5.3%	840,626	5.2%	956,552	-4.1%	2,881,607	2.0%
May	T1	846,488		549,529		577,889		1,973,906	
	T3	379,551		265,915		379,439		1,024,905	
Ttl May		1,226,039	6.7%	815,444	6.5%	957,328	4.3%	2,998,811	5.9%
June	T1	893,440		542,503		601,080		2,037,023	
	T3	390,376		245,854		417,360		1,053,590	
Ttl June		1,283,816	7.2%	788,357	1.8%	1,018,440	1.8%	3,090,613	4.0%
July	T1	1,026,067		579,630		659,994		2,265,691	
	T3	465,017		277,805		480,000		1,222,822	
Ttl July		1,491,084	8.6%	857,435	2.8%	1,139,994	-0.3%	3,488,513	4.1%
Aug	T1	1,088,621		617,225		696,354		2,402,200	
	T3	480,739		301,445		496,238		1,278,422	
Ttl Aug		1,569,360	7.7%	918,670	2.2%	1,192,592	2.1%	3,680,622	4.5%
Sep	T1	889,812		522,396		611,114		2,023,322	
	T3	373,648		229,645		384,665		987,958	
Ttl Sep		1,263,460	6.1%	752,041	0.5%	995,779	2.7%	3,011,280	3.5%
Oct	T1	893,142		550,983		535,147		1,979,272	
	T3	377,527		244,734		345,585		967,846	
Ttl Oct		1,270,669	5.5%	795,717	1.6%	880,732	4.9%	2,947,118	4.2%
Nov	T1	764,430		515,580		475,857		1,755,867	
	T3	294,055		238,320		322,444		854,819	
Ttl Nov		1,058,485	1.5%	753,900	1.9%	798,301	7.0%	2,610,686	3.2%
Dec	T1	825,233		589,790		609,273		2,024,296	
	T3	323,565		249,446		381,943		954,954	
Ttl Dec		1,148,798	6.7%	839,236	5.6%	991,216	6.4%	2,979,250	6.3%
Grand Ttl	T1	10,189,952		6,825,345		7,073,097		24,088,394	
	T3	4,195,493		3,014,402		4,811,449		12,021,344	
		14,385,445	5.4%	9,839,747	4.0%	11,884,546	0.7%	36,109,738	3.4%

TORONTO PEARSON INTERNATIONAL AIRPORT									
2014									
TOTAL PASSENGERS									
As of: 28-Apr-14									
MONTH		DOM.	14/13	T/B	14/13	INTL	14/13	Total	14/13
JAN	T1	741,387		565,449		641,950		1,948,786	
	T3	295,858		223,514		417,489		936,861	
Ttl JAN		1,037,245	3.1%	788,963	0.6%	1,059,439	6.9%	2,885,647	3.7%
FEB	T1	721,764		571,347		558,115		1,851,226	
	T3	276,840		225,444		377,543		879,827	
Ttl FEB		998,604	8.1%	796,791	5.3%	935,658	5.8%	2,731,053	6.5%
Mar	T1	798,485		687,608		642,520		2,128,613	
	T3	297,832		269,872		444,255		1,011,959	
Ttl Mar		1,096,317	3.5%	957,480	2.1%	1,086,775	0.8%	3,140,572	2.2%
Apr	T1								
	T3								
Ttl Apr									
May	T1								
	T3								
Ttl May									
June	T1								
	T3								
Ttl June									
July	T1								
	T3								
Ttl July									
Aug	T1								
	T3								
Ttl Aug									
Sep	T1								
	T3								
Ttl Sep									
Oct	T1								
	T3								
Ttl Oct									
Nov	T1								
	T3								
Ttl Nov									
Dec	T1								
	T3								
Ttl Dec									
Grand Ttl	T1	2,261,636		1,824,404		1,842,585		5,928,625	
	T3	870,530		718,830		1,239,287		2,828,647	
		3,132,166	4.8%	2,543,234	2.6%	3,081,872	4.3%	8,757,272	4.0%

Notes: Above data is preliminary and subject to subsequent adjustments as new information is obtained.



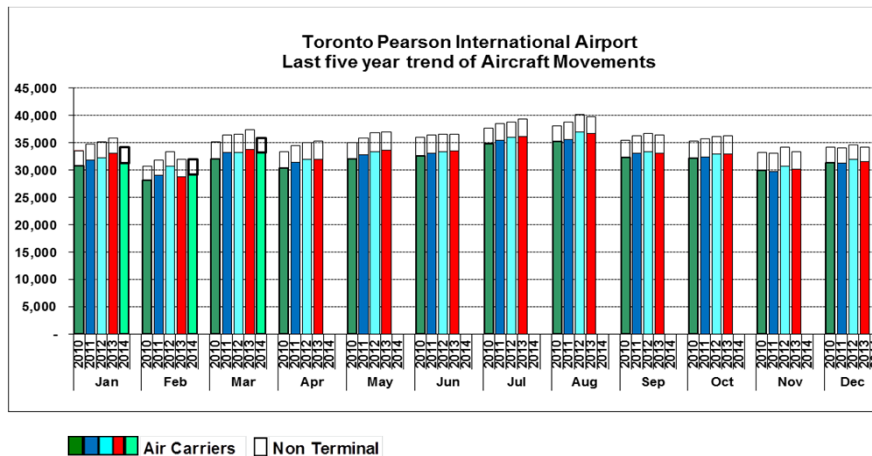
TORONTO PEARSON INTERNATIONAL AIRPORT AIRCRAFT MOVEMENTS March, 2014				
28-Mar-14	Actual		13/12	Actual
	1900	1899	% Chg	1898
AIR CARRIER				
> 19T Current	29,378	30,242	-2.9%	28,988
YTD	82,983	85,534	-3.0%	83,935
12 Month*	345,688	434,013	-20.4%	335,519
<=19T Current	3,761	3,532	6.5%	4,255
YTD	10,667	10,097	5.6%	12,250
12 Month*	47,417	58,368	-18.8%	55,118
Total Air Carrier				
Current	33,139	33,774	-1.9%	33,243
YTD	93,650	95,631	-2.1%	96,185
12 Month*	393,105	492,381	-20.2%	390,637
Non Terminal				
Current	2,690	3,562	-24.5%	3,252
YTD	8,195	9,381	-12.6%	8,828
12 Month*	36,348	37,635	-3.4%	37,192
Grand Total				
TOTAL ALL OPERATIONS				
Current	35,829	37,336	-4.0%	36,495
YTD	101,845	105,012	-3.0%	105,013
12 Month*	429,453	530,016	-19.0%	427,829

Notes: Above data is preliminary and subject to subsequent adjustments as new information is obtained.

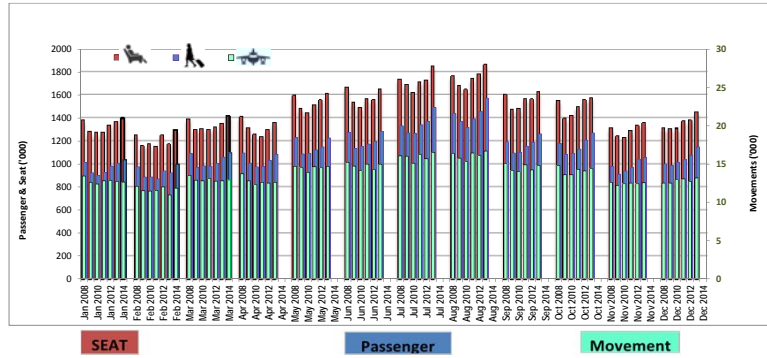
1) Data is based on Planning's analysis of **NAVCANADA** data

2) Data represents Arrivals and Departures.

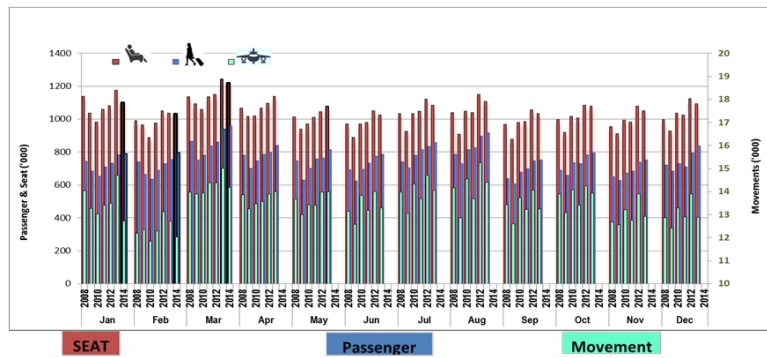
* 12 Month Period Feb--1 to Jan-00



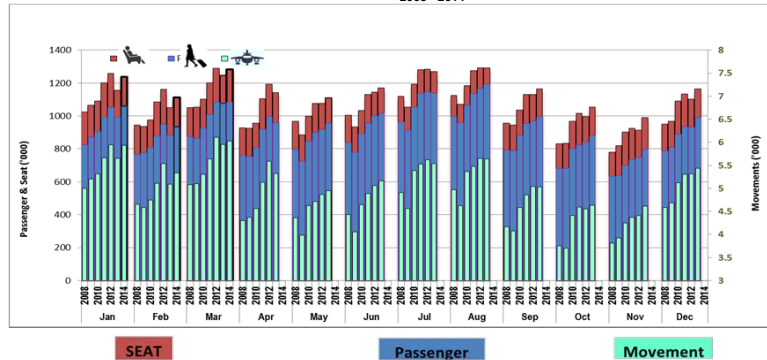
**TORONTO PEARSON
Domestic Traffic
2008 - 2014**



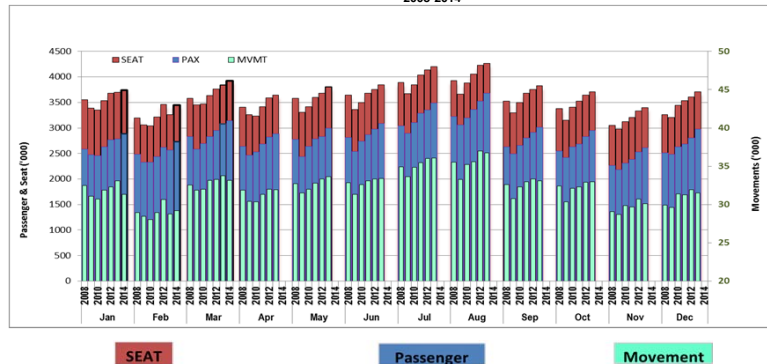
**TORONTO PEARSON
Transborder Traffic
2008 - 2014**



**TORONTO PEARSON
International Traffic
2008 - 2014**



**TORONTO PEARSON
TOTAL TERMINAL TRAFFIC
2008-2014**





Airport Activity Statistics Report

Events

- 25 Gates on Pier Hammerhead F of T1 opened Jan 31, 2007
- T2 ceased operation January 30, 2007 at 9:30 pm.(East Hold continues to operate from T1)
- The New T1 1 opened 10 new gates November 1, 2005
- The New T1 1 opened on April 6, 2004 and T1Old ceased operating on the same day.
- Passenger comparisons shown in the Passengers by Terminal reflect T1Old vs. T1 (New) within the T1 table.
- Passengers using the IFT (Infield Terminal) previously processed at T1Old are now processed at T1 and are included in the same comparison table

Moves

- March 2012 - Continental Airlines-United Airlines merger as UNITED
- November 2010 – Continental moved to T1
- January 2010 – NWA merged with Delta as DELTA
- May 16, 2008 – Air India moved to T1
- May 2, 2008 – Icelandair begins operations at T1
- March 29, 2008 – US Air moved to T1
- June 22, 2005 - Westjet moved back to T3
- April 18, 2004 - Westjet moves from T3 to T2
- April 6, 2004 - Air Canada/Jazz Domestic and International operations transfer from T1 (Old) and T2 to T1 (New) along with other Star Alliance and other T1 (Old) carriers.
- June 2, 2003 - Tango moved from T3 to T2 and is a fare option for Air Canada's Domestic and some Transborder activities
- April - June 2000 - Canadian Airlines and its regional affiliates transferred Domestic and Transborder operations to T2 and International services to T1 as it merged with Air Canada. Carriers which had been operating in T1 transferred to T3 including Delta, USAir, Continental, and several international carriers. T2 International Operations moved to T1 (ACA, DLH, MXA, etc.)

Traffic Impacts

- **July 2013**, - Air Canada launches leisure airline as “Rouge”
- **June 2013**, - WestJet launched a new regional airline as “Encore”
- **June 2012**, - WestJet starts non-stop service seven times daily on weekdays between Toronto and New York City's LaGuardia Airport.
- **June 2012**, - Thomas Cook sold its franchise network of 100 agencies to Transat Distribution Co.
- **Sept. 2011**, - American Express pulled out of Canada's retail agency business.
- **June 13 – 16, 2011**, - Air Canada labor strike
- **June 25 – 27, 2010**, - G8/20 Leaders Summit.
- **January 31, 2010**, - NWA ceased operation to merged with Delta Airlines
- **December 25, 2009**, – Failed terrorist attempt on Delta flight from Amsterdam to Detroit leading to additional security restrictions on transborder air travel
- **April, 2009**, - H1N1 (Swine Flu) virus in Mexico. Resulted travel restriction around the world. Travel advisory to Canadians for Mexico issued
- **August 9, 2006**, - British and US airlines threatened – all carry-on screened
- Major thunderstorms hit GTA, **August, 2005**
- **August 2, 2005** – Air France A340 crashes. No fatalities
- **March 11, 2005** - Jetsgo declared protection from bankruptcy