



# Greater Toronto Airports Authority Memorandum

**General**

**To :**

**From :** Faraz Salim

**Date :** February 23, 2015

**RE:** AVIATION ACTIVITY REPORT – **December, 2014**

---

The December 2014 Aviation Activity Report (and 2014 full year) is now available for your information and reference.

Overall passenger traffic at Toronto Pearson in December was 3.2 million, representing an increase of 6.1% compared to December 2013. For the full year 2014, passenger numbers were 38.6 million, an increase of 6.8% over 2013.

All three sectors, DOM/TB/INT, showed continuing robust traffic growth of 5.4%/6.9%/6.4% respectively in December. All three sectors have shown full year growth of 6.3%/6.8%/7.5% respectively.

A total of 35,244 aircraft arrivals and departures operated at Toronto Pearson in December, representing a +3.1% change from December 2013 (full year 2014 of +0.2%).

For **arrivals (>19 tonnes, ATB)**, seat growth was 5.3% for December / 4.5% full year and MTOW 6.1%/5.6% respectively.

The following table shows the December and full year 2014 vs. 2013 growth for key activities (**All Terminals, all weights**):

Activity	Passenger	Arr. Seats	Arr. MTOW	Movements	Cargo
December	6.1%	5.7%	6.7%	+3.1%	+17.6%
YTD 2014	6.8%	4.6%	5.1%	+0.2%	+9.1%

**Original signed by**

**Faraz Salim**

Manager – Decision Support

Finance and Treasury

Phone: 416-776-3858 Cell: 647-382-1769

fax 416-776-4168

[faraz.salim@gtaa.com](mailto:faraz.salim@gtaa.com)



## **TORONTO PEARSON AVIATION ACTIVITY REPORT**

**December, 2014**

**GENERAL RELEASE**

Business Optimization

**TORONTO PEARSON INTERNATIONAL AIRPORT  
AIRPORT ACTIVITY REPORT  
REVENUE AND NON REVENUE PASSENGERS**

**December-14**

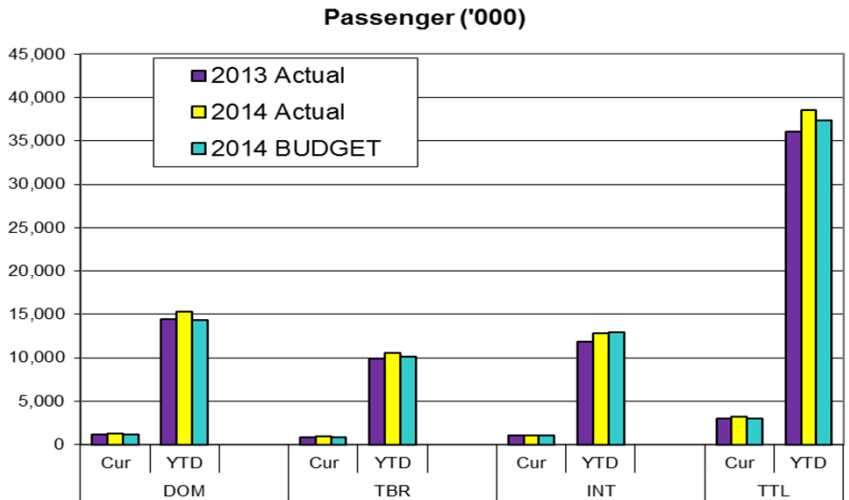
As of: 06-Feb-15

Actual  
14/13

(B)

(A) / (B)  
Annual  
AAGR

SECTOR	2014	2013	% AAGR	(A)			14/13	(B)	
				SECTOR	2014	2013		% AAGR	BUDGET 2014
<b>TERMINAL ONE</b>				<b>TOTAL AIRPORT</b>					
DOM	<b>879,693</b>	825,233	6.6%	DOM	<b>1,210,776</b>	1,148,798	5.40%	1,094,615	10.61%
YTD	10,883,514	10,189,508	6.8%	YTD	15,291,421	14,385,001	6.30%	14,359,220	6.49%
12 Mth Total	10,883,514	10,189,508	6.8%	12 Mth Total	15,291,421	14,385,001	6.30%	14,359,220	6.49%
TBR	<b>595,894</b>	589,790	1.0%	TBR	<b>897,225</b>	839,236	6.91%	823,216	8.99%
YTD	7,123,243	6,823,719	4.4%	YTD	10,506,143	9,838,121	6.79%	10,079,193	4.24%
12 Mth Total	7,123,243	6,823,719	4.4%	12 Mth Total	10,506,143	9,838,121	6.79%	10,079,193	4.24%
INT'L	<b>657,837</b>	609,029	8.0%	INT'L	<b>1,054,056</b>	990,972	6.37%	1,035,492	1.79%
YTD	7,692,119	7,072,735	8.8%	YTD	12,774,397	11,884,184	7.49%	12,933,359	-1.23%
12 Mth Total	7,692,119	7,072,735	8.8%	12 Mth Total	12,774,397	11,884,184	7.49%	12,933,359	-1.23%
TOTAL	<b>2,133,424</b>	2,024,052	5.4%	TOTAL	<b>3,162,057</b>	2,979,006	6.14%	2,953,323	7.07%
YTD	25,698,876	24,085,962	6.7%	YTD	38,571,961	36,107,306	6.83%	37,371,772	3.21%
12 Mth Total	25,698,876	24,085,962	6.7%	12 Mth Total	38,571,961	36,107,306	6.83%	37,371,772	3.21%
<b>TERMINAL THREE</b>									
DOM	<b>331,083</b>	323,565	2.3%						
YTD	4,407,907	4,195,493	5.1%						
12 Mth Total	4,407,907	4,195,493	5.1%						
TBR	<b>301,331</b>	249,446	20.8%						
YTD	3,382,900	3,014,402	12.2%						
12 Mth Total	3,382,900	3,014,402	12.2%						
INT'L	<b>396,219</b>	381,943	3.7%						
YTD	5,082,278	4,811,449	5.6%						
12 Mth Total	5,082,278	4,811,449	5.6%						
TOTAL	<b>1,028,633</b>	954,954	7.7%						
YTD	12,873,085	12,021,344	7.1%						
12 Mth Total	12,873,085	12,021,344	7.1%						



**Notes:** Above data is preliminary and subject to subsequent adjustments as new information is obtained.

DOM - Domestic travel within Canada

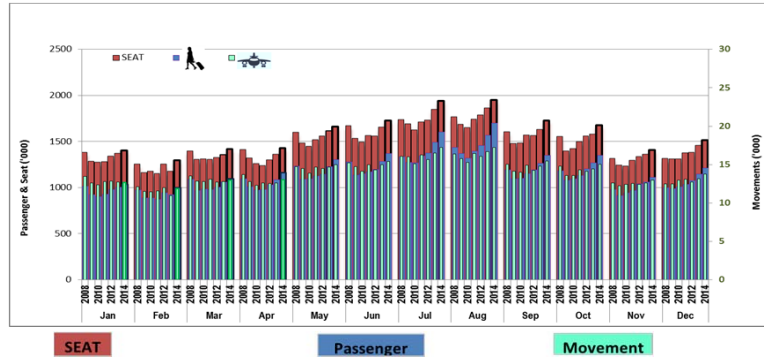
TBR - Transborder to U.S. only

INT'L - International countries excluding the USA

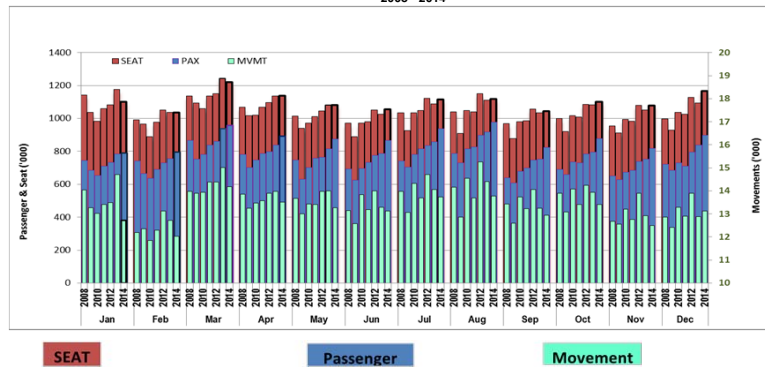
12 Month Period Jan-14 to Dec-14

T2 Closed in Jan 2007 - Traffic transferred to T1.

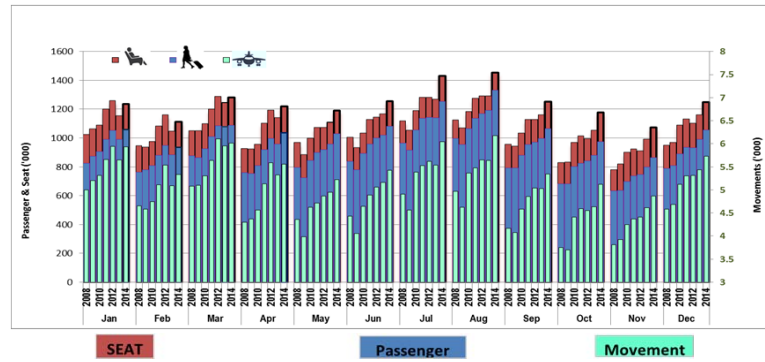
**TORONTO PEARSON  
Domestic Traffic  
2008 - 2014**



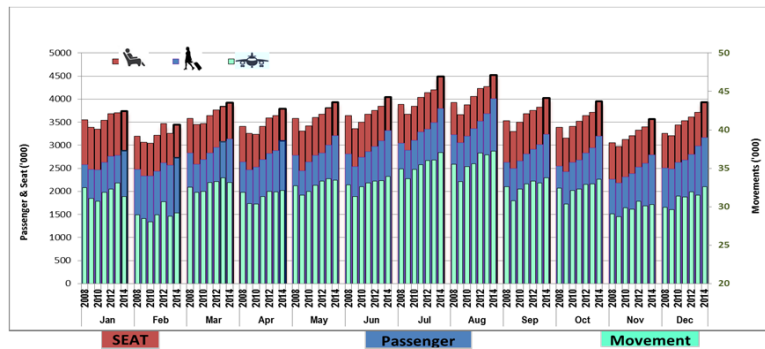
**TORONTO PEARSON  
Transborder Traffic  
2008 - 2014**



**TORONTO PEARSON  
International Traffic  
2008 - 2014**



**TORONTO PEARSON  
TOTAL TERMINAL TRAFFIC  
2008-2014**

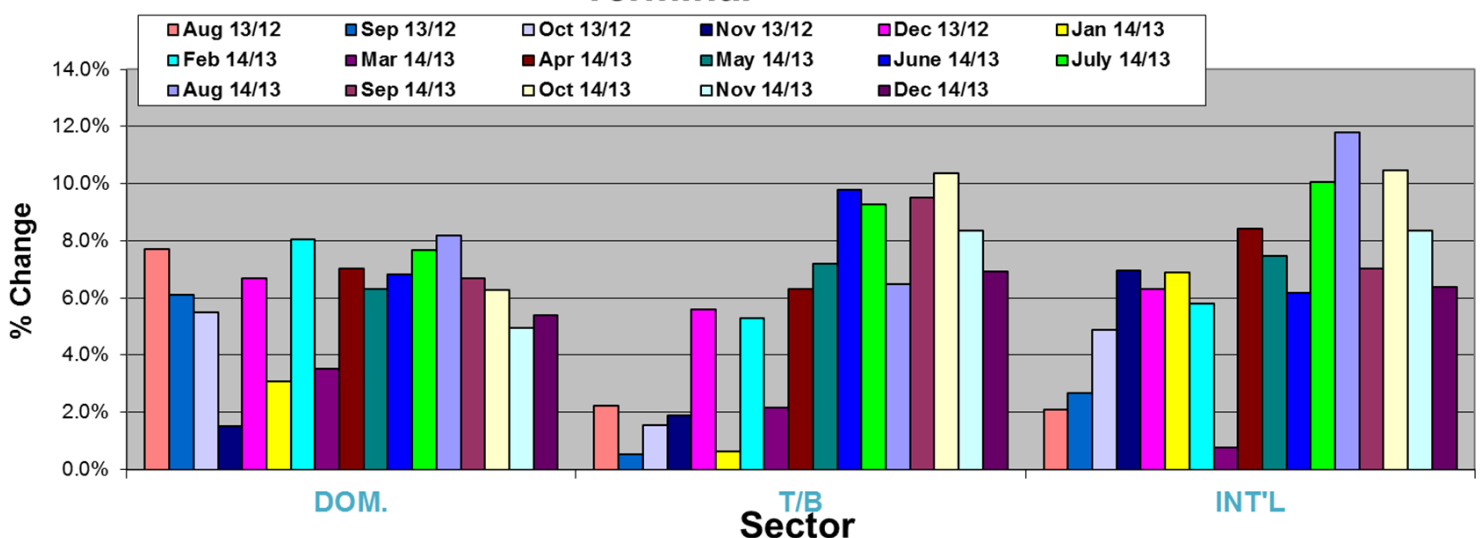


TORONTO PEARSON INTERNATIONAL AIRPORT									
2013									
TOTAL PASSENGERS									
MONTH		DOM.	13/12	T/B	13/12	INT'L	13/12	Total	13/12
JAN	T1	733,758		555,806		600,484		1,890,048	
	T3	272,505		228,121		390,751		891,377	
Ttl JAN		1,006,263	2.6%	783,927	7%	991,235	-6%	2,781,425	1%
FEB	T1	672,292		537,081		523,857		1,733,230	
	T3	251,817		219,878		360,607		832,302	
Ttl FEB		924,109	-1.8%	756,959	3.5%	884,464	-6.8%	2,565,532	-2.1%
Mar	T1	768,013		670,242		634,533		2,072,788	
	T3	290,920		267,193		443,380		1,001,493	
Ttl Mar		1,058,933	5.6%	937,435	8.7%	1,077,913	-0.7%	3,074,281	4.2%
Apr	T1	788,656		594,580		547,515		1,930,751	
	T3	295,773		246,046		409,037		950,856	
Ttl Apr		1,084,429	5.3%	840,626	5.2%	956,552	-4.1%	2,881,607	2.0%
May	T1	846,488		549,529		577,889		1,973,906	
	T3	379,551		265,915		379,439		1,024,905	
Ttl May		1,226,039	6.7%	815,444	6.5%	957,328	4.3%	2,998,811	5.9%
June	T1	893,440		542,503		601,080		2,037,023	
	T3	390,376		245,854		417,360		1,053,590	
Ttl June		1,283,816	7.2%	788,357	1.8%	1,018,440	1.8%	3,090,613	4.0%
July	T1	1,026,067		579,630		659,994		2,265,691	
	T3	465,017		277,805		480,000		1,222,822	
Ttl July		1,491,084	8.6%	857,435	2.8%	1,139,994	-0.3%	3,488,513	4.1%
Aug	T1	1,088,621		617,225		696,354		2,402,200	
	T3	480,739		301,445		496,238		1,278,422	
Ttl Aug		1,569,360	7.7%	918,670	2.2%	1,192,592	2.1%	3,680,622	4.5%
Sep	T1	889,812		522,396		611,114		2,023,322	
	T3	373,648		229,645		384,665		987,958	
Ttl Sep		1,263,460	6.1%	752,041	0.5%	995,779	2.7%	3,011,280	3.5%
Oct	T1	893,142		550,983		535,147		1,979,272	
	T3	377,527		244,734		345,585		967,846	
Ttl Oct		1,270,669	5.5%	795,717	1.6%	880,732	4.9%	2,947,118	4.2%
Nov	T1	764,430		515,580		475,857		1,755,867	
	T3	294,055		238,320		322,444		854,819	
Ttl Nov		1,058,485	1.5%	753,900	1.9%	798,301	7.0%	2,610,686	3.2%
Dec	T1	825,233		589,790		609,273		2,024,296	
	T3	323,565		249,446		381,943		954,954	
Ttl Dec		1,148,798	6.7%	839,236	5.6%	991,216	6.4%	2,979,250	6.3%
Grand Ttl	T1	10,189,952		6,825,345		7,073,097		24,088,394	
	T3	4,195,493		3,014,402		4,811,449		12,021,344	
Grand Ttl		14,385,445	5.4%	9,839,747	4.0%	11,884,546	0.7%	36,109,738	3.4%

TORONTO PEARSON INTERNATIONAL AIRPORT									
2014									
TOTAL PASSENGERS									
		As of: 06-Feb-15							
MONTH		DOM.	14/13	T/B	14/13	INT'L	14/13	Total	14/13
JAN	T1	741,387		565,285		641,950		1,948,622	
	T3	295,858		223,678		417,489		937,025	
Ttl JAN		1,037,245	3.1%	788,963	0.6%	1,059,439	6.9%	2,885,647	3.7%
FEB	T1	721,764		571,347		558,115		1,851,226	
	T3	276,840		225,444		377,543		879,827	
Ttl FEB		998,604	8.1%	796,791	5.3%	935,658	5.8%	2,731,053	6.5%
Mar	T1	798,444		687,511		642,335		2,128,290	
	T3	297,832		269,872		443,952		1,011,656	
Ttl Mar		1,096,276	3.5%	957,383	2.2%	1,086,287	0.8%	3,139,946	2.2%
Apr	T1	835,465		627,202		611,639		2,074,306	
	T3	325,015		265,415		425,579		1,016,009	
Ttl Apr		1,160,480	7.0%	892,617	6.3%	1,037,218	8.4%	3,090,315	7.3%
May	T1	912,821		590,074		625,998		2,128,893	
	T3	390,619		284,058		402,904		1,077,581	
Ttl May		1,303,440	6.3%	874,132	7.2%	1,028,902	7.5%	3,206,474	6.9%
June	T1	971,674		572,524		643,795		2,187,993	
	T3	399,825		292,875		437,629		1,130,329	
Ttl June		1,371,499	6.8%	865,399	9.8%	1,081,424	6.2%	3,318,322	7.4%
July	T1	1,117,624		624,686		741,681		2,483,991	
	T3	488,035		312,260		512,925		1,313,220	
Ttl July		1,605,659	7.7%	936,946	9.3%	1,254,606	10.1%	3,797,211	8.8%
Aug	T1	1,174,688		639,981		778,865		2,593,534	
	T3	523,217		338,165		554,165		1,415,547	
Ttl Aug		1,697,905	8.2%	978,146	6.5%	1,333,030	11.8%	4,009,081	8.9%
Sep	T1	969,038		541,967		658,943		2,169,948	
	T3	379,097		281,495		406,873		1,067,465	
Ttl Sep		1,348,135	6.7%	823,462	9.5%	1,065,816	7.0%	3,237,413	7.5%
Oct	T1	959,798		574,194		602,371		2,136,363	
	T3	390,520		303,952		370,523		1,064,995	
Ttl Oct		1,350,318	6.3%	878,146	10.4%	972,894	10.5%	3,201,358	8.6%
Nov	T1	801,118		532,578		528,590		1,862,286	
	T3	309,966		284,355		336,477		930,798	
Ttl Nov		1,111,084	5.0%	816,933	8.4%	865,067	8.4%	2,793,084	7.0%
Dec	T1	879,693		595,894		657,837		2,133,424	
	T3	331,083		301,331		396,219		1,028,633	
Ttl Dec		1,210,776	5.4%	897,225	6.9%	1,054,056	6.4%	3,162,057	6.1%
Grand Ttl	T1	10,883,514		7,123,243		7,692,119		25,698,876	
	T3	4,407,907		3,382,900		5,082,278		12,873,085	
Grand Ttl		15,291,421	6.3%	10,506,143	6.8%	12,774,397	7.5%	38,571,961	6.8%

Notes: Above data is preliminary and subject to subsequent adjustments as new information is obtained.

## Annual Percentage Changes by month and sector All Terminal



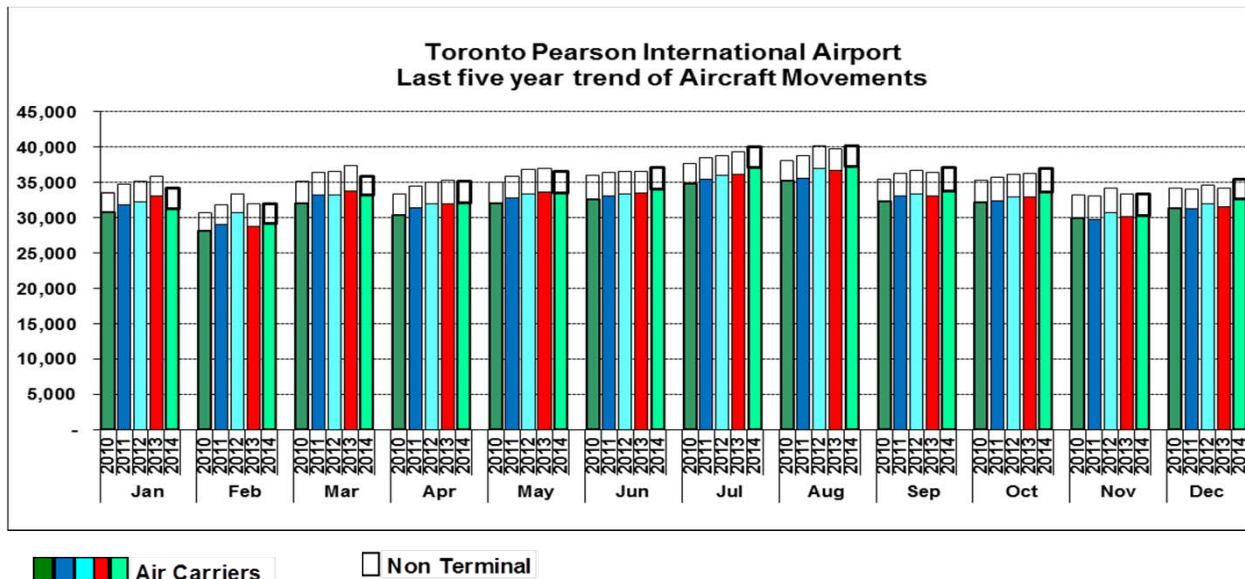
<b>TORONTO PEARSON INTERNATIONAL AIRPORT AIRCRAFT MOVEMENTS December-14</b>				
As of: 06-Feb-15	Actual		14/13	Actual
	2014	2013	% Chg	2012
<b>AIR CARRIER</b>				
> 19T Current	<b>28,496</b>	<b>28,012</b>	1.7%	<b>28,631</b>
YTD	348,873	348,205	0.2%	348,479
12 Month*	348,873	348,205	0.2%	348,479
<=19T Current	<b>4,084</b>	<b>3,470</b>	17.7%	<b>3,280</b>
YTD	48,788	46,843	4.2%	48,271
12 Month*	48,788	46,843	4.2%	48,271
<b>Total Air Carrier</b>				
Current	<b>32,580</b>	<b>31,482</b>	3.5%	<b>31,911</b>
YTD	397,661	395,048	0.7%	396,750
12 Month*	397,661	395,048	0.7%	396,750
<b>Non Terminal</b>				
Current	<b>2,664</b>	<b>2,704</b>	-1.5%	<b>2,677</b>
YTD	35,166	37,126	-5.3%	36,632
12 Month*	35,166	37,126	-5.3%	36,632
<b>Grand Total</b>				
<b>TOTAL ALL OPERATIONS</b>				
Current	<b>35,244</b>	<b>34,186</b>	3.1%	<b>34,588</b>
YTD	432,827	432,174	0.2%	433,382
12 Month*	432,827	432,174	0.2%	433,382

**Notes:** Above data is preliminary and subject to subsequent adjustments as new information is obtained.

1) Data is based on Planning's analysis of NAVCANADA data

2) Data represents Arrivals and Departures.

\* 12 Month Period Jan-14 to Dec-14





## Airport Activity Statistics Report

### Events

- 25 Gates on Pier Hammerhead F of T1 opened Jan 31, 2007
- T2 ceased operation January 30, 2007 at 9:30 pm.(East Hold continues to operate from T1)
- The New T1 1 opened 10 new gates November 1, 2005
- The New T1 1 opened on April 6, 2004 and T1Old ceased operating on the same day.
- Passenger comparisons shown in the Passengers by Terminal reflect T1Old vs. T1 (New) within the T1 table.
- Passengers using the IFT (Infield Terminal) previously processed at T1Old are now processed at T1 and are included in the same comparison table

### Moves

- March 2012 - Continental Airlines-United Airlines merger as UNITED
- November 2010 – Continental moved to T1
- January 2010 – NWA merged with Delta as DELTA
- May 16, 2008 – Air India moved to T1
- May 2, 2008 – Icelandair begins operations at T1
- March 29, 2008 – US Air moved to T1
- June 22, 2005 - Westjet moved back to T3
- April 18, 2004 - Westjet moves from T3 to T2
- April 6, 2004 - Air Canada/Jazz Domestic and International operations transfer from T1 (Old) and T2 to T1 (New) along with other Star Alliance and other T1 (Old) carriers.
- June 2, 2003 - Tango moved from T3 to T2 and is a fare option for Air Canada's Domestic and some Transborder activities
- April - June 2000 - Canadian Airlines and its regional affiliates transferred Domestic and Transborder operations to T2 and International services to T1 as it merged with Air Canada. Carriers which had been operating in T1 transferred to T3 including Delta, USAir, Continental, and several international carriers. T2 International Operations moved to T1 (ACA, DLH, MXA, etc.)

### Traffic Impacts

- **July 2013**, - Air Canada launches leisure airline as “Rouge”
- **June 2013**, - WestJet launched a new regional airline as “Encore”
- **June 2012**, - WestJet starts non-stop service seven times daily on weekdays between Toronto and New York City's LaGuardia Airport.
- **June 2012**, - Thomas Cook sold its franchise network of 100 agencies to Transat Distribution Co.
- **Sept. 2011**, - American Express pulled out of Canada’s retail agency business.
- **June 13 – 16, 2011**, - Air Canada labor strike
- **June 25 – 27, 2010**, - G8/20 Leaders Summit.
- **January 31, 2010**, - NWA ceased operation to merged with Delta Airlines
- **December 25, 2009**, – Failed terrorist attempt on Delta flight from Amsterdam to Detroit leading to additional security restrictions on transborder air travel
- **April, 2009**, - H1N1 (Swine Flu) virus in Mexico. Resulted travel restriction around the world. Travel advisory to Canadians for Mexico issued
- **August 9, 2006**, - British and US airlines threatened – all carry-on screened
- Major thunderstorms hit GTA, **August, 2005**
- **August 2, 2005** – Air France A340 crashes. No fatalities
- **March 11, 2005** - Jetsgo declared protection from bankruptcy