



Greater Toronto Airports Authority Memorandum

General Release

To :
From : Faraz Salim
Date : July 3, 2014
RE: AVIATION ACTIVITY REPORT – **May, 2014**

The May 2014 Aviation Activity Report is now available for your information and reference.

Overall passenger traffic at Toronto Pearson in May was 3.21 million, representing an increase of 6.9% compared to May 2013 and averaging over 7% growth in the last two months. For the year 2014, passenger numbers were 15.05 million, an increase of 5.3% over 2013.

All three sectors, DOM/TB/INT, showed continuing robust traffic growth of 6.3%/7.2%/7.5% respectively in May. The International Sector has now shown a positive growth in twelve out of the last thirteen months and this sector has now rebounded from slowdown of 2013.

A total of 36,730 aircraft arrivals and departures operated at Toronto Pearson in May, representing a -0.4% change from May 2013 (YTD 2014 of -1.9%). For **arrivals (>19 tonnes, ATB)**, seat growth was 3.4% for May / 2.9% YTD and MTOW 4.8%/4.2% respectively.

The following table shows the May and YTD 2014 vs. 2013 growth for key activities (**All Terminals, all weights**):

Activity	Passenger	Arr. Seats	Arr. MTOW	Movements
May	6.9%	3.3%	4.3%	-0.4%
YTD 2014	5.3%	3.0%	3.6%	-1.9%

Original signed by

Faraz Salim

Manager – Business Optimization
Aviation Services
416-776-3858 cell 647-382-1769
fax 416-776-4168
faraz.salim@gtaa.com



Memorandum

General Release

To :

From : Faraz Salim

Date : July 2, 2014

RE: AVIATION ACTIVITY REPORT – **May, 2014**

The May 2014 Aviation Activity Report is now available on I~share for your information and reference. Please follow the link below to view.

[P04 - Statistics - Monthly Activity Report – May, 2014](#)

Overall passenger traffic at Toronto Pearson in May was 3.21 million, representing an increase of 6.9% compared to May 2013 and averaging over 7% growth in the last two months. For the year 2014, passenger numbers were 15.05 million, an increase of 5.3% over 2013.

All three sectors, DOM/TB/INT, showed continuing robust traffic growth of 6.3%/7.2%/7.5% respectively in May. The International Sector has now shown a positive growth in twelve out of the last thirteen months and this sector has now rebounded from slowdown of 2013.

A total of 36,730 aircraft arrivals and departures operated at Toronto Pearson in May, representing a -0.4% change from May 2013 (YTD 2014 of -1.9%). For **arrivals (>19 tonnes, ATB)**, seat growth was 3.4% for May / 2.9% YTD and MTOW 4.8%/4.2% respectively.

The following table shows the May and YTD 2014 vs. 2013 growth for key activities (**All Terminals, all weights**):

Activity	Passenger	Arr. Seats	Arr. MTOW	Movements
May	6.9%	3.3%	4.3%	-0.4%
YTD 2014	5.3%	3.0%	3.6%	-1.9%

Original signed by

Faraz Salim

Manager – Business Optimization

Aviation Services

416-776-3858 cell 647-382-1769

fax 416-776-4168

faraz.salim@gtaa.com



TORONTO PEARSON AVIATION ACTIVITY REPORT

May, 2014

GENERAL RELEASE R E P O R T

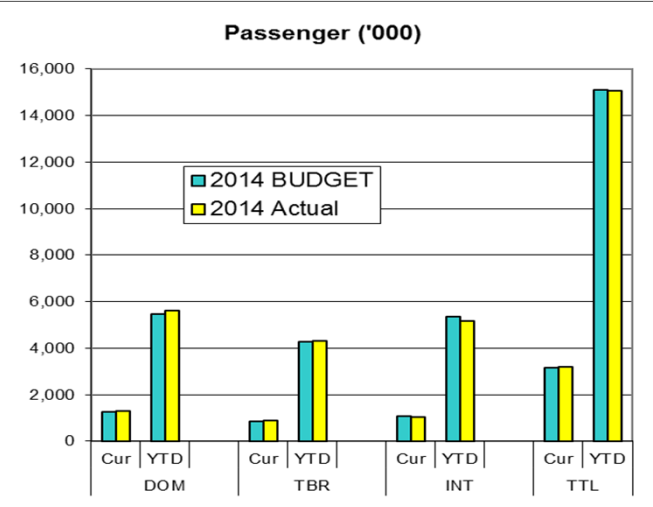
Business Optimization

**TORONTO PEARSON INTERNATIONAL AIRPORT
AIRPORT ACTIVITY REPORT
REVENUE AND NON REVENUE PASSENGERS**

May-14
25-Jun-14

(A)
Actual
13/12

SECTOR	2014	2013	% AAGR	SECTOR	2014	2013	% AAGR
TERMINAL ONE							
DOM	912,819	846,488	7.8%	DOM	1,303,438	1,226,039	6.31%
YTD	4,009,879	3,809,207	5.3%	YTD	5,596,043	5,299,773	5.59%
12 Mth Total	10,390,624	9,856,646	5.4%	12 Mth Total	14,681,715	13,842,175	6.07%
TBR	590,074	549,529	7.4%	TBR	874,205	815,444	7.21%
YTD	3,041,583	2,907,238	4.6%	YTD	4,309,959	4,134,391	4.25%
12 Mth Total	6,959,690	6,782,368	2.6%	12 Mth Total	10,015,315	9,708,196	3.16%
INT'L	625,998	577,889	8.3%	INT'L	1,028,902	957,328	7.48%
YTD	3,080,037	2,884,278	6.8%	YTD	5,147,504	4,867,492	5.75%
12 Mth Total	7,268,856	6,944,524	4.7%	12 Mth Total	12,164,558	11,668,142	4.25%
TOTAL	2,128,891	1,973,906	7.9%	TOTAL	3,206,545	2,998,811	6.93%
YTD	10,131,499	9,600,723	5.5%	YTD	15,053,506	14,301,656	5.26%
12 Mth Total	24,619,170	23,583,538	4.4%	12 Mth Total	36,861,588	35,218,513	4.67%
TERMINAL THREE							
DOM	390,619	379,551	2.9%				
YTD	1,586,164	1,490,566	6.4%				
12 Mth Total	4,291,091	3,985,529	7.7%				
TBR	284,131	265,915	6.9%				
YTD	1,268,376	1,227,153	3.4%				
12 Mth Total	3,055,625	2,925,828	4.4%				
INT'L	402,904	379,439	6.2%				
YTD	2,067,467	1,983,214	4.2%				
12 Mth Total	4,895,702	4,723,618	3.6%				
TOTAL	1,077,654	1,024,905	5.1%				
YTD	4,922,007	4,700,933	4.7%				
12 Mth Total	12,242,418	11,634,975	5.2%				



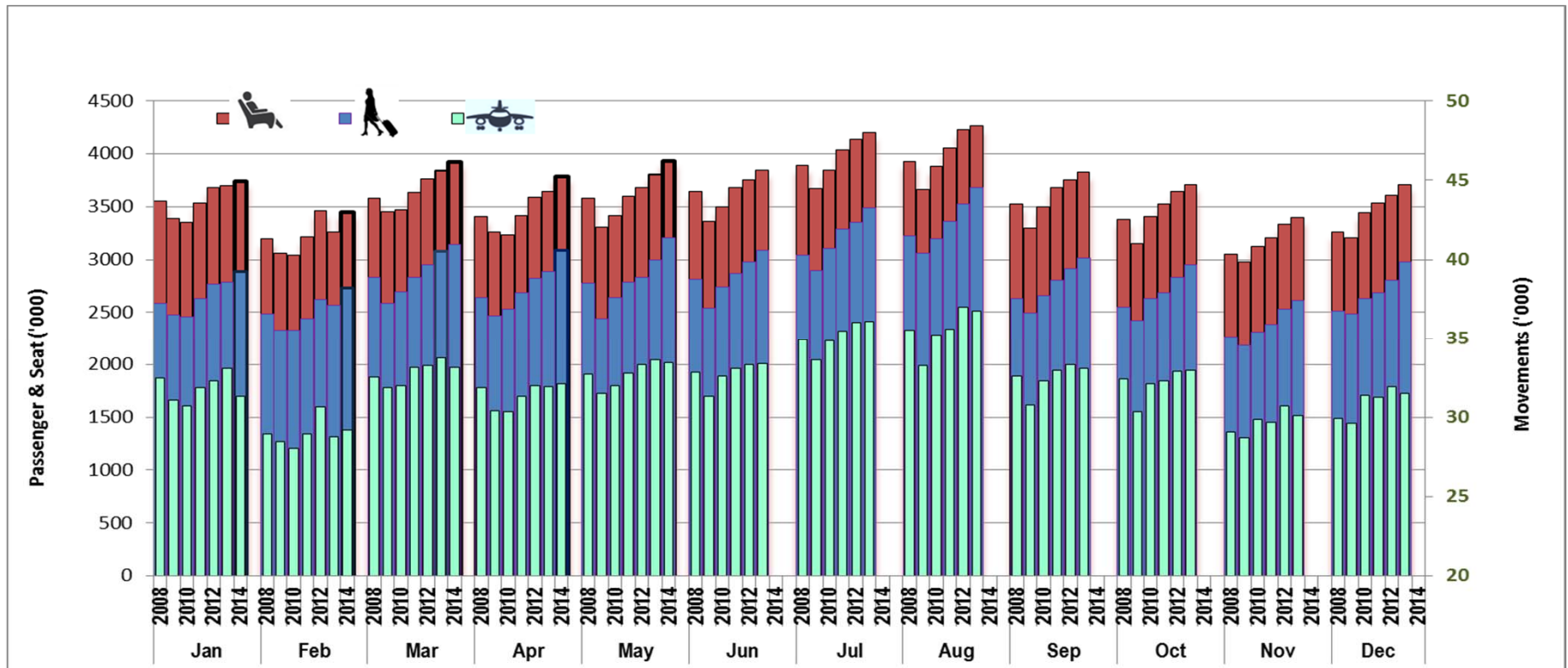
Notes: Above data is preliminary and subject to subsequent adjustments as new information is obtained.

DOM - Domestic travel within Canada
TBR - Transborder to U.S. only
INT'L - International countries excluding the USA

12 Month Period Jun-13 to May-14

T2 Closed in Jan 2007 - Traffic transferred to T1.

TORONTO PEARSON TOTAL TERMINAL TRAFFIC 2008-2014



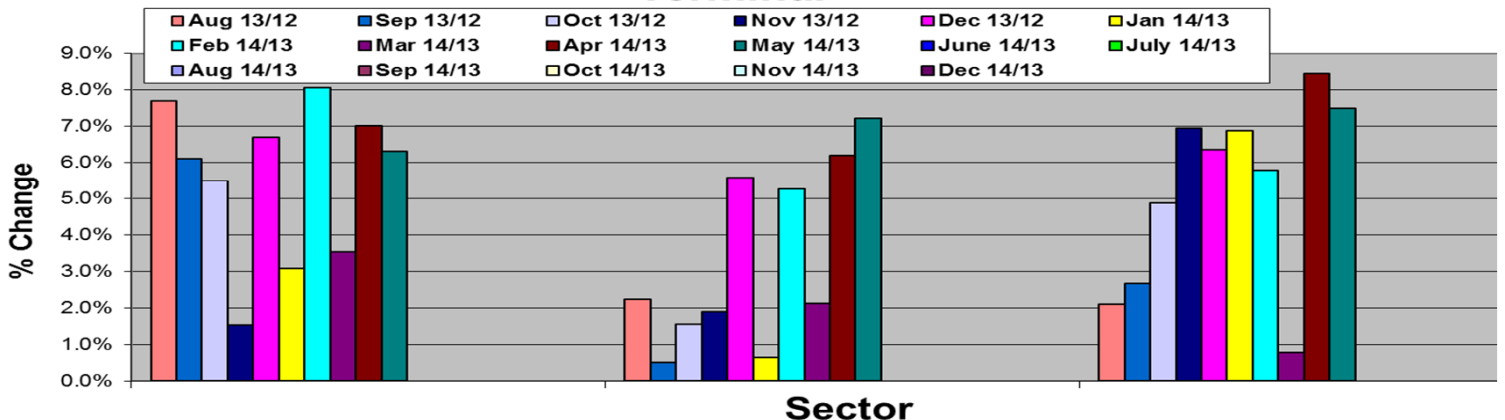
Notes: Above data is preliminary and subject to subsequent adjustments as new information is obtained.

TORONTO PEARSON INTERNATIONAL AIRPORT									
2013									
TOTAL PASSENGERS									
MONTH		DOM.	13/12	T/B	13/12	INT'L	13/12	Total	13/12
JAN	T1	733,758		555,806		600,484		1,890,048	
	T3	272,505		228,121		390,751		891,377	
Ttl JAN		1,006,263	2.6%	783,927	7.0%	991,235	-5.6%	2,781,425	0.6%
FEB	T1	672,292		537,081		523,857		1,733,230	
	T3	251,817		220,169		360,316		832,302	
Ttl FEB		924,109	-1.8%	757,250	3.6%	884,173	-6.8%	2,565,532	-2.1%
Mar	T1	768,013		670,242		634,533		2,072,788	
	T3	290,920		267,193		443,380		1,001,493	
Ttl Mar		1,058,933	5.6%	937,435	8.7%	1,077,913	-0.7%	3,074,281	4.2%
Apr	T1	788,656		594,580		547,515		1,930,751	
	T3	295,773		246,046		409,037		950,856	
Ttl Apr		1,084,429	5.3%	840,626	5.2%	956,552	-4.1%	2,881,607	2.0%
May	T1	846,488		549,529		577,889		1,973,906	
	T3	379,551		265,915		379,439		1,024,905	
Ttl May		1,226,039	6.7%	815,444	6.5%	957,328	4.3%	2,998,811	5.9%
June	T1	893,440		542,503		601,080		2,037,023	
	T3	390,376		245,854		417,360		1,053,590	
Ttl June		1,283,816	7.2%	788,357	1.8%	1,018,440	1.8%	3,090,613	4.0%
July	T1	1,026,067		579,630		659,994		2,265,691	
	T3	465,017		277,805		480,000		1,222,822	
Ttl July		1,491,084	8.6%	857,435	2.8%	1,139,994	-0.3%	3,488,513	4.1%
Aug	T1	1,088,621		617,225		696,354		2,402,200	
	T3	480,739		301,445		496,238		1,278,422	
Ttl Aug		1,569,360	7.7%	918,670	2.2%	1,192,592	2.1%	3,680,622	4.5%
Sep	T1	889,812		522,396		611,114		2,023,322	
	T3	373,648		229,645		384,665		987,958	
Ttl Sep		1,263,460	6.1%	752,041	0.5%	995,779	2.7%	3,011,280	3.5%
Oct	T1	893,142		550,983		535,147		1,979,272	
	T3	377,527		244,734		345,585		967,846	
Ttl Oct		1,270,669	5.5%	795,717	1.6%	880,732	4.9%	2,947,118	4.2%
Nov	T1	764,430		515,580		475,857		1,755,867	
	T3	294,055		238,516		322,248		854,819	
Ttl Nov		1,058,485	1.5%	754,096	1.9%	798,105	6.9%	2,610,686	3.2%
Dec	T1	825,233		589,790		609,273		2,024,296	
	T3	323,565		249,446		381,943		954,954	
Ttl Dec		1,148,798	6.7%	839,236	5.6%	991,216	6.4%	2,979,250	6.3%
Grand Ttl	T1	10,189,952		6,825,345		7,073,097		24,088,394	
	T3	4,195,493		3,014,402		4,811,449		12,021,344	
		14,385,445	5.4%	9,839,747	4.0%	11,884,546	0.7%	36,109,738	3.4%

TORONTO PEARSON INTERNATIONAL AIRPORT								
2014								
TOTAL PASSENGERS								
25-Jun-14								
DOM.		14/13	T/B	14/13	INT'L	14/13	Total	14/13
741,387			565,449		641,950		1,948,786	
295,858			223,514		417,489		936,861	
1,037,245	3.1%		788,963	0.6%	1,059,439	6.9%	2,885,647	3.7%
721,764			571,347		558,115		1,851,226	
276,840			225,444		377,543		879,827	
998,604	8.1%		796,791	5.3%	935,658	5.8%	2,731,053	6.5%
798,444			687,511		642,335		2,128,290	
297,832			269,872		443,952		1,011,656	
1,096,276	3.5%		957,383	2.1%	1,086,287	0.8%	3,139,946	2.1%
835,465			627,202		611,639		2,074,306	
325,015			265,415		425,579		1,016,009	
1,160,480	7.0%		892,617	6.2%	1,037,218	8.4%	3,090,315	7.2%
912,819			590,074		625,998		2,128,891	
390,619			284,131		402,904		1,077,654	
1,303,438	6.3%		874,205	7.2%	1,028,902	7.5%	3,206,545	6.9%
0			0		0		0	
0			0		0		0	
0	0.0%		0	0.0%	0	0.0%	0	0.0%
0			0		0		0	
0			0		0		0	
0	0.0%		0	0.0%	0	0.0%	0	0.0%
0			0		0		0	
0			0		0		0	
0	0.0%		0	0.0%	0	0.0%	0	0.0%
0			0		0		0	
0			0		0		0	
0	0.0%		0	0.0%	0	0.0%	0	0.0%
0			0		0		0	
0			0		0		0	
0	0.0%		0	0.0%	0	0.0%	0	0.0%
4,009,879			3,041,583		3,080,037		10,131,499	
1,586,164			1,268,376		2,067,467		4,922,007	
5,596,043	5.6%		4,309,959	4.2%	5,147,504	5.8%	15,053,506	5.3%

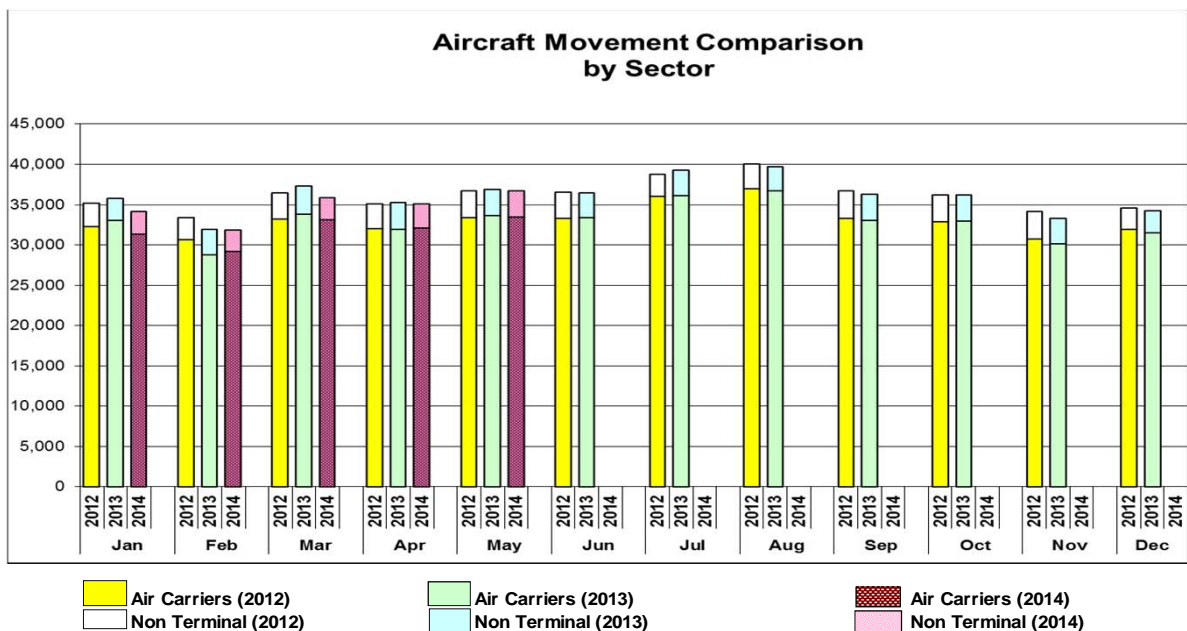
Notes: Above data is preliminary and subject to subsequent adjustments as new information is obtained.

Annual Percentage Changes by month and sector All Terminal



PEARSON AIRCRAFT MOVEMENT												
(Actual and Previous Year comparison)												
25-Jun-14												
Month	AIR CARRIER								Non Terminal	Chg	GRAND TOTAL	Chg
	DOM	Chg	TBR	Chg	INT	Chg	TOTAL	Chg				
Jan-14	12,637	-0.7%	12,728	-13.4%	5,933	5.1%	31,298	-5.4%	2,829	4.5%	34,127	-4.6%
Feb-14	11,845	8.1%	12,036	-5.4%	5,332	4.7%	29,213	1.5%	2,676	-14.0%	31,889	0.0%
Mar-14	12,947	1.1%	14,171	-5.6%	6,017	1.1%	33,135	-1.9%	2,690	-24.5%	35,825	-4.0%
Apr-14	13,027	3.3%	13,520	-3.5%	5,557	4.4%	32,104	0.5%	3,029	-8.0%	35,133	-0.3%
May-14	14,975	2.0%	13,266	-5.3%	5,226	5.7%	33,467	-0.5%	3,263	-0.1%	36,730	-0.4%
Jun-14	-		-		-		-		-		-	
Jul-14	-		-		-		-		-		-	
Aug-14	-		-		-		-		-		-	
Sep-14	-		-		-		-		-		-	
Oct-14	-		-		-		-		-		-	
Nov-14	-		-		-		-		-		-	
Dec-14	-		-		-		-		-		-	
2014	65,431	2.6%	65,721	-6.7%	28,065	4.1%	159,217	-1.2%	14,487	-9.1%	173,704	-1.9%

Chg = Previous Year Change for the month





Airport Activity Statistics Report

Events

- 25 Gates on Pier Hammerhead F of T1 opened Jan 31, 2007
- T2 ceased operation January 30, 2007 at 9:30 pm.(East Hold continues to operate from T1)
- The New T1 1 opened 10 new gates November 1, 2005
- The New T1 1 opened on April 6, 2004 and T1Old ceased operating on the same day.
- Passenger comparisons shown in the Passengers by Terminal reflect T1Old vs. T1 (New) within the T1 table.
- Passengers using the IFT (Infield Terminal) previously processed at T1Old are now processed at T1 and are included in the same comparison table

Moves

- November 2010 – Continental moved to T1
- May 16, 2008 – Air India moved to T1
- May 2, 2008 – Icelandair begins operations at T1
- March 29, 2008 – US Air moved to T1
- June 22, 2005 - Westjet moved back to T3
- April 18, 2004 - Westjet moves from T3 to T2
- April 6, 2004 - Air Canada/Jazz Domestic and International operations transfer from T1 (Old) and T2 to T1 (New) along with other Star Alliance and other T1 (Old) carriers.
- June 2, 2003 - Tango moved from T3 to T2 and is a fare option for Air Canada's Domestic and some Transborder activities
- April - June 2000 - Canadian Airlines and its regional affiliates transferred Domestic and Transborder operations to T2 and International services to T1 as it merged with Air Canada. Carriers which had been operating in T1 transferred to T3 including Delta, USAir, Continental, and several international carriers. T2 International Operations moved to T1 (ACA, DLH, MXA, etc.)

Traffic Impacts

- **June 13 – 16, 2011**, - Air Canada labor strike
- **June 25 – 27, 2010**, - G8/20 Leaders Summit.
- **January 31, 2010**, - NWA ceased operation to merged with Delta Airlines
- **December 25, 2009**, – Failed terrorist attempt on Delta flight from Amsterdam to Detroit leading to additional security restrictions on transborder air travel
- **April, 2009**, - H1N1 (Swine Flu) virus in Mexico. Resulted travel restriction around the world. Travel advisory to Canadians for Mexico issued
- **August 9, 2006**, - British and US airlines threatened – all carry-on screened
- Major thunderstorms hit GTA, **August, 2005**
- **August 2, 2005** – Air France A340 crashes. No fatalities
- **March 11, 2005** - Jetsgo declared protection from bankruptcy
- **April 2004** - WestJet increased operations at Toronto and cut back some service at Hamilton Airport
- Major blackout in Ontario and eastern seaboard of the USA – **August 14-16, 2003**
- World Health Organization (WHO) imposes travel restriction to the Toronto area due to Severe Acute Respiratory Syndromes (SARS) April, 2003 until **July, 2003**
- War in Iraq – started **March 20, 2003** Occupation officially ended on **Dec 15, 2011**
- Major ice storms in Toronto and Eastern Canada - **April 3 - 4, 2003**
- Air Canada files for bankruptcy protection – **April 1, 2003**. (Exited **Oct 1, 2004**)