



Greater Toronto Airports Authority Memorandum

General Release

To :

From : Faraz Salim

Date : July 21, 2015

RE: AVIATION ACTIVITY REPORT – **May, 2015**

The May 2015 Aviation Activity Report is now available for your information and reference. We have combined the results from April as well and these are reflected in the YTD totals shown in the following summary and the attached report.

Overall passenger traffic at Toronto Pearson in May was 3.4 million, representing an increase of 6.5% compared to May 2014. For YTD 2015, passenger numbers were 16.1 million, an increase of 6.9% over the same period in 2014.

All three sectors, DOM/TB/INT, showed continuing traffic growth of 4.2%/4.6%/11.1% respectively in May. All three sectors have shown YTD growth of 4.5%/6.5%/9.7% respectively.

A total of 37,776 aircraft arrivals and departures operated at Toronto Pearson in May, representing a -3.4% increase from May 2014 (and YTD 2015 growth of +1.9%).

For **arrivals (>19 tonnes, ATB)**, seat growth was 6.1% for May / 5.4% YTD and MTOW 6.5%/6.3% respectively.

The following table shows the May and YTD 2015 vs. 2014 growth for key activities (**All Terminals, all weights**):

Activity	Passenger	Arr. Seats	Arr. MTOW	Movements
May	6.5%	6.2%	6.4%	+3.4%
YTD 2015	6.9%	5.6%	5.7%	+1.9%

Faraz Salim

Manager – Decision Support

Finance and Treasury

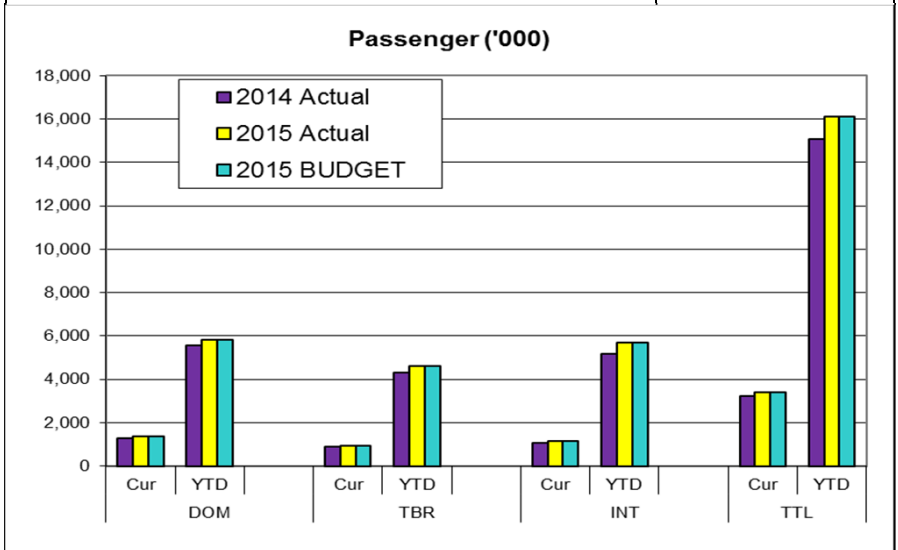
Phone: 416-776-3858 Cell: 647-382-1769

fax 416-776-4168

faraz.salim@gtaa.com

**TORONTO PEARSON INTERNATIONAL AIRPORT
AIRPORT ACTIVITY REPORT
REVENUE AND NON REVENUE PASSENGERS**

				May-15						(B)		(A) / (B)		
				Actual		As of: 6-Jul-15						BUDGET		Annual
				15/14		(A)						2015		AAGR
SECTOR	2015	2014	% AAGR	SECTOR	2015	2014	% AAGR							
TERMINAL ONE														
DOM	926,320	903,405	2.5%	DOM	1,347,854	1,294,024	4.16%					1,347,828	0.00%	
YTD	4,160,182	3,991,424	4.2%	YTD	5,830,703	5,577,588	4.54%					5,830,781	0.00%	
12 Mth Total	10,953,116	10,372,169	5.6%	12 Mth Total	15,445,241	14,663,260	5.33%					14,744,052	4.76%	
TBR	605,460	590,074	2.6%	TBR	914,457	874,132	4.61%					914,445	0.00%	
YTD	3,141,378	3,041,419	3.3%	YTD	4,591,837	4,309,886	6.54%					4,591,868	0.00%	
12 Mth Total	7,223,129	6,959,526	3.8%	12 Mth Total	10,788,021	10,015,242	7.72%					10,382,655	3.90%	
INT'L	712,786	635,414	12.2%	INT'L	1,153,310	1,038,318	11.07%					1,153,511	-0.02%	
YTD	3,473,376	3,098,494	12.1%	YTD	5,668,520	5,165,961	9.73%					5,668,634	0.00%	
12 Mth Total	8,166,824	7,287,069	12.1%	12 Mth Total	13,376,779	12,182,771	9.80%					13,239,664	1.04%	
TOTAL	2,244,566	2,128,893	5.4%	TOTAL	3,415,621	3,206,474	6.52%					3,415,784	0.00%	
YTD	10,774,936	10,131,337	6.4%	YTD	16,091,060	15,053,435	6.89%					16,091,283	0.00%	
12 Mth Total	26,343,069	24,618,764	7.0%	12 Mth Total	39,610,041	36,861,273	7.46%					38,366,371	3.24%	
TERMINAL THREE														
DOM	421,534	390,619	7.9%	DOM	1,670,521	1,586,164	5.3%							
YTD	1,670,521	1,586,164	5.3%	YTD	5,209,955	4,895,702	6.4%							
12 Mth Total	4,492,125	4,291,091	4.7%	12 Mth Total	13,266,972	12,242,509	8.4%							
TBR	308,997	284,058	8.8%	TBR	1,450,459	1,268,467	14.3%							
YTD	1,450,459	1,268,467	14.3%	YTD	4,922,098	4,922,098	8.0%							
12 Mth Total	3,564,892	3,055,716	16.7%	12 Mth Total	13,266,972	12,242,509	8.4%							
INT'L	440,524	402,904	9.3%	INT'L	2,195,144	2,067,467	6.2%							
YTD	2,195,144	2,067,467	6.2%	YTD	5,316,124	4,922,098	8.0%							
12 Mth Total	5,209,955	4,895,702	6.4%	12 Mth Total	13,266,972	12,242,509	8.4%							
TOTAL	1,171,055	1,077,581	8.7%	TOTAL	5,316,124	4,922,098	8.0%							
YTD	5,316,124	4,922,098	8.0%	YTD	13,266,972	12,242,509	8.4%							
12 Mth Total	13,266,972	12,242,509	8.4%	12 Mth Total	13,266,972	12,242,509	8.4%							



Notes: Above data is preliminary and subject to subsequent adjustments as new information is obtained.

DOM - Domestic travel within Canada

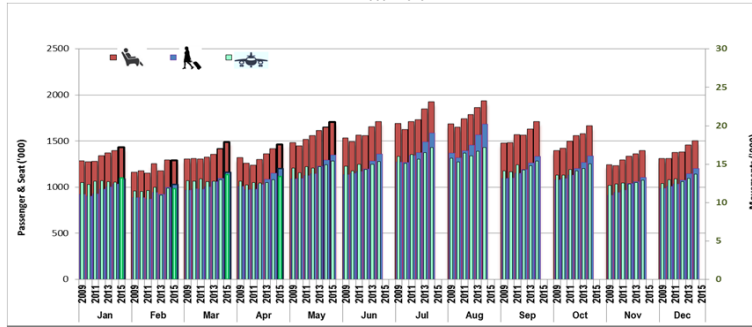
TBR - Transborder to U.S. only

INT'L - International countries excluding the USA

12 Month Period Jun-14 to May-15

T2 Closed in Jan 2007 - Traffic transferred to T1.

**TORONTO PEARSON
Domestic Traffic
2009 - 2015**

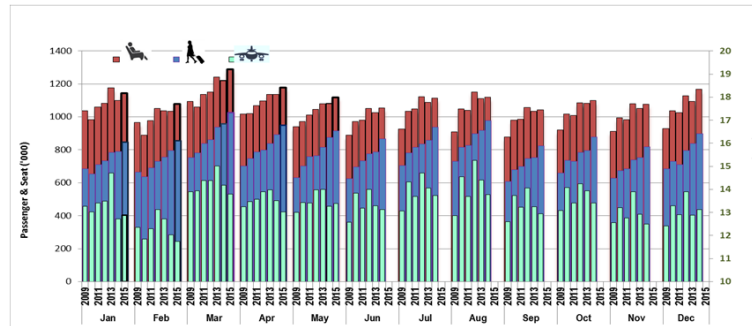


SEAT

Passenger

Movement

**TORONTO PEARSON
Transborder Traffic
2009 - 2015**

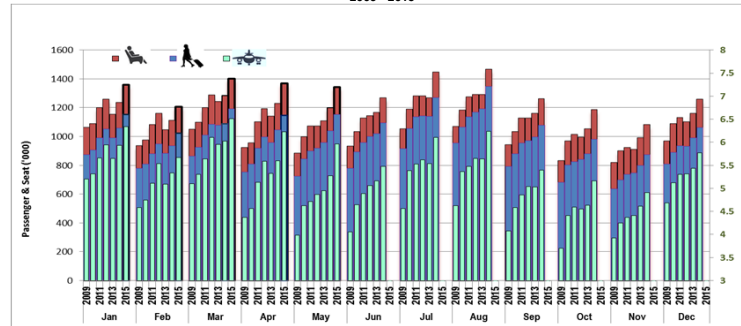


SEAT

Passenger

Movement

**TORONTO PEARSON
International Traffic
2009 - 2015**

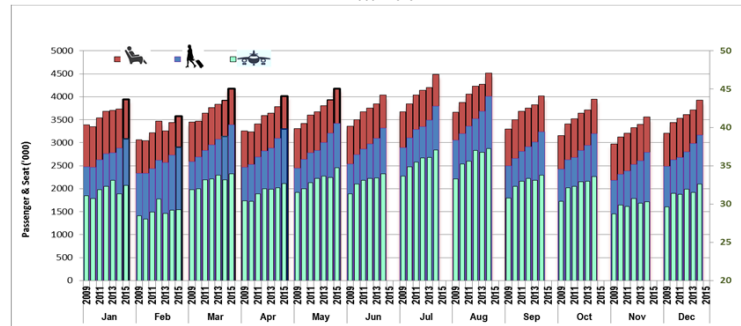


SEAT

Passenger

Movement

**TORONTO PEARSON
TOTAL TERMINAL TRAFFIC
2009 - 2015**



SEAT

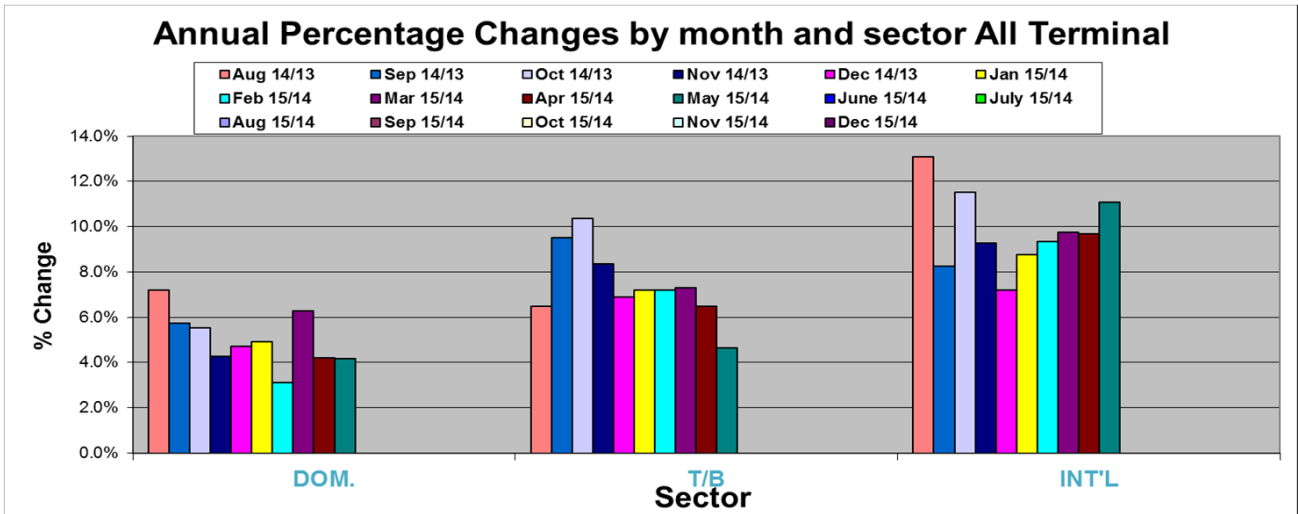
Passenger

Movement

TORONTO PEARSON INTERNATIONAL AIRPORT								
2014								
TOTAL PASSENGERS								
MONTH	DOM.	14/13	T/B	14/13	INT'L	14/13	Total	14/13
JAN	T1	741,387		565,285		641,950	1,948,622	
	T3	295,858		223,678		417,489	937,025	
Ttl JAN		1,037,245	3.1%	788,963	1%	1,059,439	2,885,647	4%
FEB	T1	721,764		571,347		558,115	1,851,226	
	T3	276,840		225,444		377,543	879,827	
Ttl FEB		998,604	8.1%	796,791	5.3%	935,658	2,731,053	6.5%
Mar	T1	797,748		687,511		643,031	2,128,290	
	T3	297,832		269,872		443,952	1,011,656	
Ttl Mar		1,095,580	3.5%	957,383	2.2%	1,086,983	3,139,946	2.2%
Apr	T1	827,120		627,202		619,984	2,074,306	
	T3	325,015		265,415		425,579	1,016,009	
Ttl Apr		1,152,135	6.3%	892,617	6.3%	1,045,563	3,090,315	7.3%
May	T1	903,405		590,074		635,414	2,128,893	
	T3	390,619		284,058		402,904	1,077,581	
Ttl May		1,294,024	5.5%	874,132	7.2%	1,038,318	3,206,474	6.9%
June	T1	958,378		572,524		657,091	2,187,993	
	T3	399,825		292,875		437,629	1,130,329	
Ttl June		1,358,203	5.8%	865,399	9.8%	1,094,720	3,318,322	7.4%
July	T1	1,102,333		624,686		756,972	2,483,991	
	T3	488,035		312,260		512,925	1,313,220	
Ttl July		1,590,368	6.7%	936,946	9.3%	1,269,897	3,797,211	8.8%
Aug	T1	1,159,027		639,981		794,526	2,593,534	
	T3	523,217		338,165		554,165	1,415,547	
Ttl Aug		1,682,244	7.2%	978,146	6.5%	1,348,691	4,009,081	8.9%
Sep	T1	956,778		541,967		671,203	2,169,948	
	T3	379,097		281,495		406,873	1,067,465	
Ttl Sep		1,335,875	5.7%	823,462	9.5%	1,078,076	3,237,413	7.5%
Oct	T1	950,475		574,194		611,694	2,136,363	
	T3	390,520		303,952		370,523	1,064,995	
Ttl Oct		1,340,995	5.5%	878,146	10.4%	982,217	3,201,358	8.6%
Nov	T1	793,894		532,578		535,814	1,862,286	
	T3	309,966		284,355		336,477	930,798	
Ttl Nov		1,103,860	4.3%	816,933	8.4%	872,291	2,793,084	7.0%
Dec	T1	872,049		595,821		666,148	2,134,018	
	T3	330,944		301,331		396,219	1,028,494	
Ttl Dec		1,202,993	4.7%	897,152	6.9%	1,062,367	3,162,512	6.2%
Grand Ttl	T1	10,784,358		7,123,170		7,791,942	25,699,470	
	T3	4,407,768		3,382,900		5,082,278	12,872,946	
		15,192,126	5.6%	10,506,070	6.8%	12,874,220	38,572,416	6.8%

TORONTO PEARSON INTERNATIONAL AIRPORT								
2015								
TOTAL PASSENGERS								
DOM.	15/14	T/B	As of: 6-Jul-15		15/14	Total	15/14	
			15/14	INT'L				
789,753		568,908		711,199		2,069,860		
298,645		276,765		441,036		1,016,446		
1,088,398	4.9%	845,673	7.2%	1,152,235	8.8%	3,086,306	7.0%	
740,712		586,824		628,687		1,956,223		
288,908		267,327		394,482		950,717		
1,029,620	3.1%	854,151	7.2%	1,023,169	9.4%	2,906,940	6.4%	
842,003		725,559		730,316		2,297,878		
322,194		301,615		462,684		1,086,493		
1,164,197	6.3%	1,027,174	7.3%	1,193,000	9.8%	3,384,371	7.8%	
861,394		654,627		690,388		2,206,409		
339,240		295,755		456,418		1,091,413		
1,200,634	4.2%	950,382	6.5%	1,146,806	9.7%	3,297,822	6.7%	
926,320		605,460		712,786		2,244,566		
421,534		308,997		440,524		1,171,055		
1,347,854	4.2%	914,457	4.6%	1,153,310	11.1%	3,415,621	6.5%	
0		0		0		0		
0		0		0		0		
0	0.0%	0	0.0%	0	0.0%	0	0.0%	
0		0		0		0		
0		0		0		0		
0	0.0%	0	0.0%	0	0.0%	0	0.0%	
0		0		0		0		
0		0		0		0		
0	0.0%	0	0.0%	0	0.0%	0	0.0%	
0		0		0		0		
0		0		0		0		
0	0.0%	0	0.0%	0	0.0%	0	0.0%	
4,160,182		3,141,378		3,473,376		10,774,936		
1,670,521		1,450,459		2,195,144		5,316,124		
5,830,703	4.5%	4,591,837	6.5%	5,668,520	9.7%	16,091,060	6.9%	

Notes: Above data is preliminary and subject to subsequent adjustments as new information is obtained.



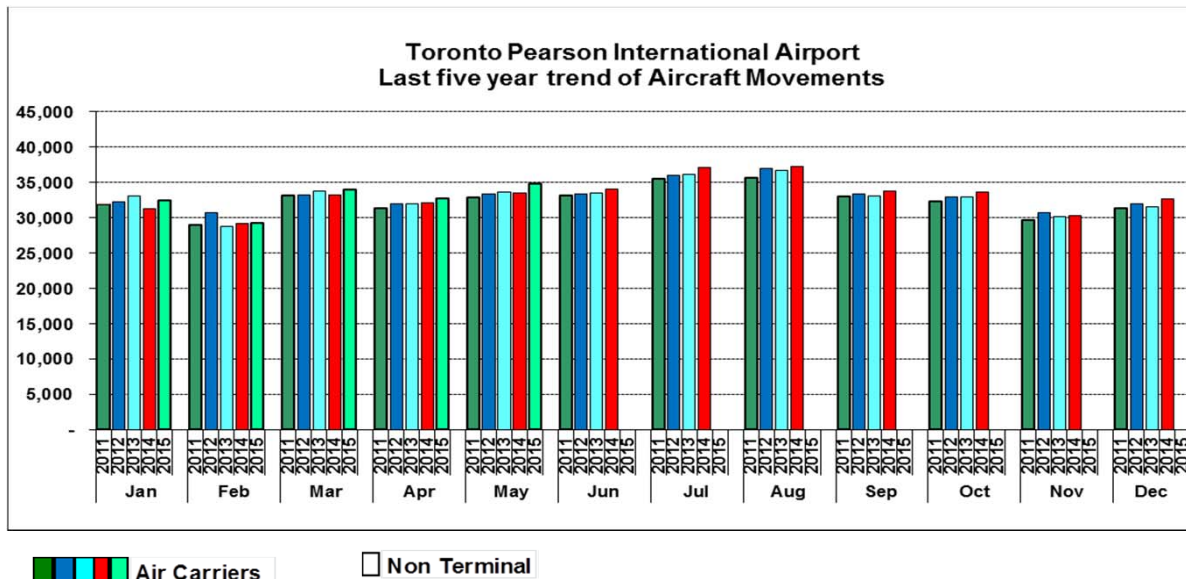
TORONTO PEARSON INTERNATIONAL AIRPORT AIRCRAFT MOVEMENTS May, 2015				
As of: 6-Jul-15	Actual		15/14	Actual
	1900	1899	% Chg	1898
AIR CARRIER				
> 19T Current	30,110	29,112	3.4%	29,206
YTD	142,292	140,403	1.3%	143,324
12 Month*	350,762	345,284	1.6%	351,480
<=19T Current	4,635	4,353	6.5%	4,421
YTD	20,668	18,813	9.9%	17,835
12 Month*	50,641	47,821	5.9%	44,893
Total Air Carrier				
Current	34,745	33,465	3.8%	33,627
YTD	162,960	159,216	2.4%	161,159
12 Month*	401,403	393,105	2.1%	396,373
Non Terminal				
Current	3,031	3,086	-1.8%	3,230
YTD	13,723	14,260	-3.8%	15,803
12 Month*	34,629	35,583	-2.7%	37,330
Grand Total				
TOTAL ALL OPERATIONS				
Current	37,776	36,551	3.4%	36,857
YTD	176,683	173,476	1.8%	176,962
12 Month*	436,032	428,688	1.7%	433,703

Notes: Above data is preliminary and subject to subsequent adjustments as new information is obtained.

1) Data is based on Planning's analysis of NAVCANADA data

2) Data represents Arrivals and Departures.

*12 Month Period Jun -14 to May - 15





Airport Activity Statistics Report

Events

- 25 Gates on Pier Hammerhead F of T1 opened Jan 31, 2007
- T2 ceased operation January 30, 2007 at 9:30 pm.(East Hold continues to operate from T1)
- The New T1 1 opened 10 new gates November 1, 2005
- The New T1 1 opened on April 6, 2004 and T1Old ceased operating on the same day.
- Passenger comparisons shown in the Passengers by Terminal reflect T1Old vs. T1 (New) within the T1 table.
- Passengers using the IFT (Infield Terminal) previously processed at T1Old are now processed at T1 and are included in the same comparison table

Moves

- March 2012 - Continental Airlines-United Airlines merger as UNITED
- November 2010 – Continental moved to T1
- January 2010 – NWA merged with Delta as DELTA
- May 16, 2008 – Air India moved to T1
- May 2, 2008 – Icelandair begins operations at T1
- March 29, 2008 – US Air moved to T1
- June 22, 2005 - Westjet moved back to T3
- April 18, 2004 - Westjet moves from T3 to T2
- April 6, 2004 - Air Canada/Jazz Domestic and International operations transfer from T1 (Old) and T2 to T1 (New) along with other Star Alliance and other T1 (Old) carriers.
- June 2, 2003 - Tango moved from T3 to T2 and is a fare option for Air Canada's Domestic and some Transborder activities
- April - June 2000 - Canadian Airlines and its regional affiliates transferred Domestic and Transborder operations to T2 and International services to T1 as it merged with Air Canada. Carriers which had been operating in T1 transferred to T3 including Delta, USAir, Continental, and several international carriers. T2 International Operations moved to T1 (ACA, DLH, MXA, etc.)

Traffic Impacts

- **July 2013**, - Air Canada launches leisure airline as “Rouge”
- **June 2013**, - WestJet launched a new regional airline as “Encore”
- **June 2012**, - WestJet starts non-stop service seven times daily on weekdays between Toronto and New York City's LaGuardia Airport.
- **June 2012**, - Thomas Cook sold its franchise network of 100 agencies to Transat Distribution Co.
- **Sept. 2011**, - American Express pulled out of Canada’s retail agency business.
- **June 13 – 16, 2011**, - Air Canada labor strike
- **June 25 – 27, 2010**, - G8/20 Leaders Summit.
- **January 31, 2010**, - NWA ceased operation to merged with Delta Airlines
- **December 25, 2009**, – Failed terrorist attempt on Delta flight from Amsterdam to Detroit leading to additional security restrictions on transborder air travel
- **April, 2009**, - H1N1 (Swine Flu) virus in Mexico. Resulted travel restriction around the world. Travel advisory to Canadians for Mexico issued
- **August 9, 2006**, - British and US airlines threatened – all carry-on screened
- Major thunderstorms hit GTA, **August, 2005**
- **August 2, 2005** – Air France A340 crashes. No fatalities
- **March 11, 2005** - Jetsgo declared protection from bankruptcy