



# Greater Toronto Airports Authority Memorandum

**General External Release**

**To :**

**From :** Brad Robertson

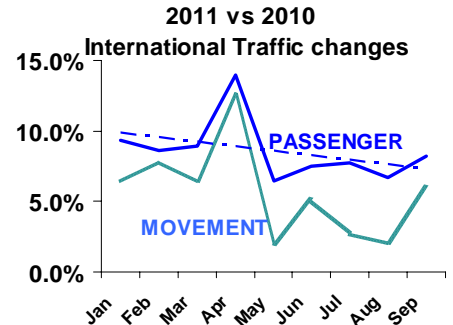
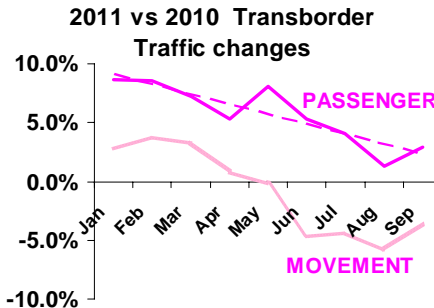
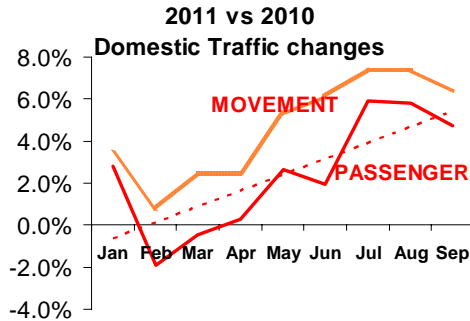
**Date :** November 24, 2011

**RE:** AVIATION ACTIVITY REPORT – **SEPTEMBER, 2011**

The September, 2011 Aviation Activity Report is now available for your information and reference.

The overall passenger volume in September increased by 5.4% from September 2010. All sectors experienced passenger growth led by the international sector at 8.2%, followed by domestic and transborder at 4.7% and 2.9% respectively. Aircraft movements increased by 2.5% from September 2010, including a 2% increase in passenger aircraft and a 7.7% increase in cargo/business aviation activity.

The charts below illustrate the monthly year-over-year passenger and aircraft movement growth rates by sector in 2011.



Following a slow start in early 2011, domestic traffic growth has steadily improved. In contrast, transborder traffic growth rates have trended downwards in 2011, with passenger growth rates averaging 7.4% from January to April and 4.3% from May to September, while aircraft movement growth rates have been negative since May. International passenger and aircraft movement growth rates have also been trending downwards during 2011 but both remain positive (note that the strong international growth in April 2011 was attributed to reduced activity in April 2010 associated with the volcanic eruptions).

**Original signed by**

**Brad Robertson**

General Manager, Strategic Analysis & Forecasting  
Strategic Planning and Airport Development  
6-5425 fax 6-4168  
[Brad.Robertson@GTAA.com](mailto:Brad.Robertson@GTAA.com)



# **TORONTO PEARSON AVIATION ACTIVITY REPORT**

**September-11**

**GENERAL RELEASE**

Strategic Analysis & Forecasting

**TORONTO PEARSON INTERNATIONAL AIRPORT  
AIRPORT ACTIVITY REPORT  
REVENUE AND NON REVENUE PASSENGERS**

**September-11**

Actual  
11/10  
As of: 15-Nov-11

**(A)**  
Actual  
10/09

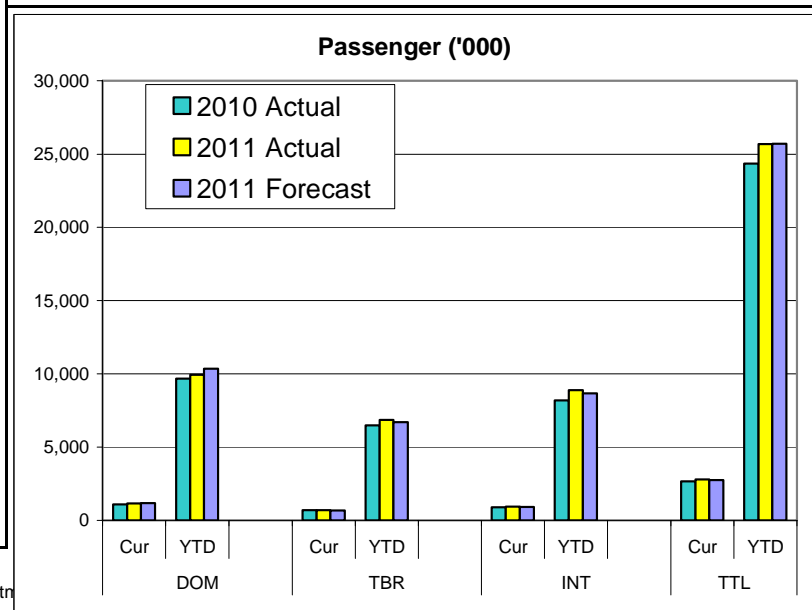
**(B)**

2011  
Annual  
Forecast  
vs 2010

**(A) - (B)**  
Variance

SECTOR	2011	2010	% AAGR	SECTOR	2011	2010	% AAGR	(A)	(B)	(A) - (B)
								Actual	2011	Variance
								10/09	Annual	
									Forecast	
									vs 2010	
<b>TERMINAL ONE</b>				<b>TOTAL AIRPORT</b>						
DOM	823,298	796,388	3.4%	DOM	1,153,530	1,101,615	4.71%			
YTD	7,120,559	7,085,088	0.5%	YTD	9,944,761	9,684,108	2.69%	6.3%	-1.54%	
12 Mth Total	9,334,896	9,272,247	0.7%	12 Mth Total	12,991,450	12,667,549	2.56%		-3.56%	
TBR	497,088	430,046	15.6%	TBR	698,764	678,891	2.93%	3.0%	-0.07%	
YTD	4,790,161	4,130,140	16.0%	YTD	6,852,792	6,490,043	5.59%		2.59%	
12 Mth Total	6,205,102	5,365,208	15.7%	12 Mth Total	8,991,600	8,463,333	6.24%			
INT'L	547,512	533,966	2.5%	INT'L	953,802	881,558	8.20%	5.1%	3.10%	
YTD	4,996,367	4,799,972	4.1%	YTD	8,883,187	8,186,377	8.51%		3.41%	
12 Mth Total	6,411,778	6,078,831	5.5%	12 Mth Total	11,275,057	10,315,224	9.31%			
TOTAL	1,867,898	1,760,400	6.1%	TOTAL	2,806,096	2,662,064	5.41%	5.0%	0.42%	
YTD	16,907,087	16,015,200	5.6%	YTD	25,680,740	24,360,528	5.42%		0.43%	
12 Mth Total	21,951,776	20,716,286	6.0%	12 Mth Total	33,258,107	31,446,106	5.76%			

<b>TERMINAL THREE</b>			
DOM	330,232	305,227	8.2%
YTD	2,824,202	2,599,020	8.7%
12 Mth Total	3,656,554	3,395,302	7.7%
TBR	201,676	248,845	-19.0%
YTD	2,062,631	2,359,903	-12.6%
12 Mth Total	2,786,498	3,098,125	-10.1%
INT'L	406,290	347,592	16.9%
YTD	3,886,820	3,386,405	14.8%
12 Mth Total	4,863,279	4,236,393	14.8%
TOTAL	938,198	901,664	4.1%
YTD	8,773,653	8,345,328	5.1%
12 Mth Total	11,306,331	10,729,820	5.4%



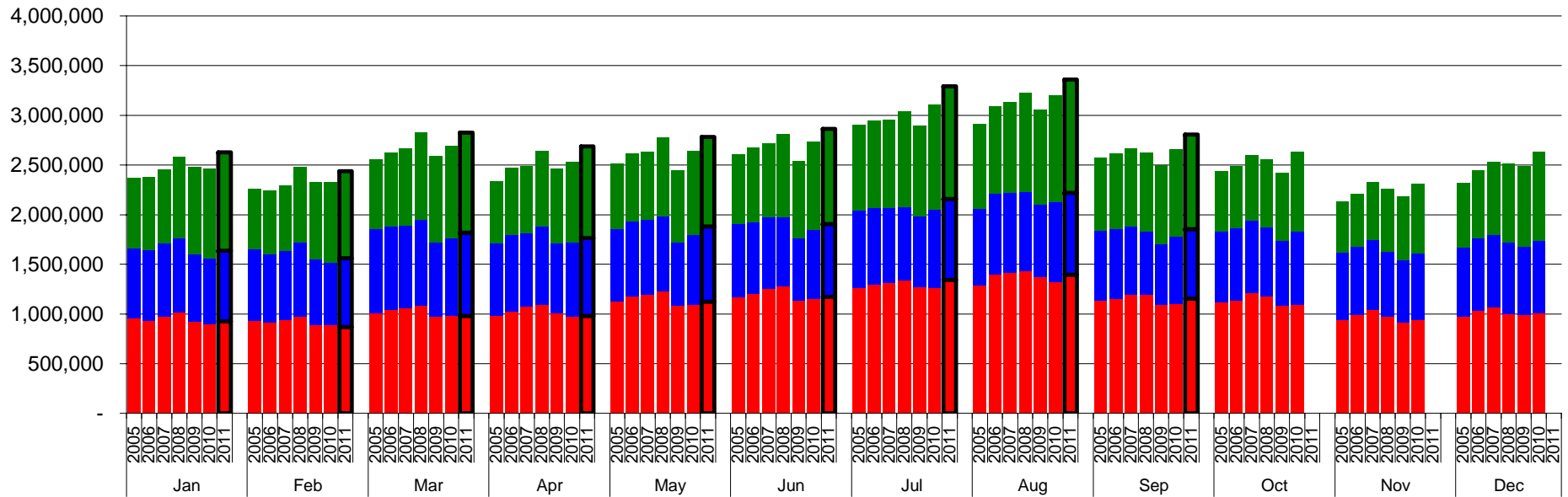
**Notes:** Above data is preliminary and subject to subsequent adjustment once final data is obtained.

DOM - Domestic travel within Canada  
TBR - Transborder to U.S. only  
INT'L - International countries excluding the USA

12 Month Period Oct-10 to Sep-11

T2 Closed in Jan 2007 - Traffic transferred to T1.

## TORONTO PEARSON INTERNATIONAL AIRPORT Total Passengers 2005 - 2011



Domestic

Transborder

International

**Notes:**

Above data is preliminary and subject to subsequent adjustments as new information is obtained.

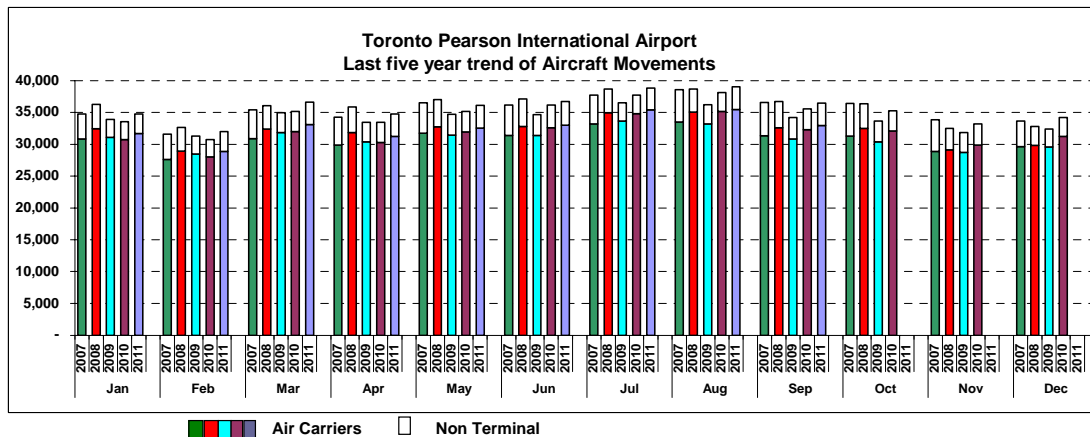
TORONTO PEARSON INTERNATIONAL AIRPORT AIRCRAFT MOVEMENTS September					
As of: 15-Nov-11	Actual		11/10 % Chg	Annual Frcst 2011	Act vs Frct Variance
	2011	2010			
<b>AIR CARRIER</b>					
> 35T Current		20,980	0.2%	-1.0%	1.3%
Ytd	191,597	187,697	2.1%		3.1%
12 Month*	251,620	243,076	3.5%		
<35T Current	11,917	11,319	5.3%	5.9%	-0.6%
Ytd	102,671	100,179	2.5%		-3.4%
12 Month*	135,827	133,503	1.7%		
<b>Total Air Carrier</b>					
Current	32,948	32,299	2.0%	1.4%	0.6%
Ytd	294,268	287,876	2.2%		0.8%
12 Month*	387,447	376,579	2.9%		
<b>Non Terminal</b>					
Ytd	3,508	3,258	7.7%	1.9%	5.8%
12 Month*	40,458	36,977	9.4%		
<b>Grand Total TOTAL ALL OPERATIONS</b>					
Current	36,456	35,557	2.5%	1.4%	1.1%
Ytd	325,232	315,625	3.0%		1.6%
12 Month*	427,905	413,556	3.5%		

Notes: Above data is preliminary and subject to subsequent adjustments as new information is obtained.

1) Data is based on Planning's analysis of NAVCANADA data

2) Data represents Arrivals and Departures.

\*12 Month Period Oct-10 to Sep-11

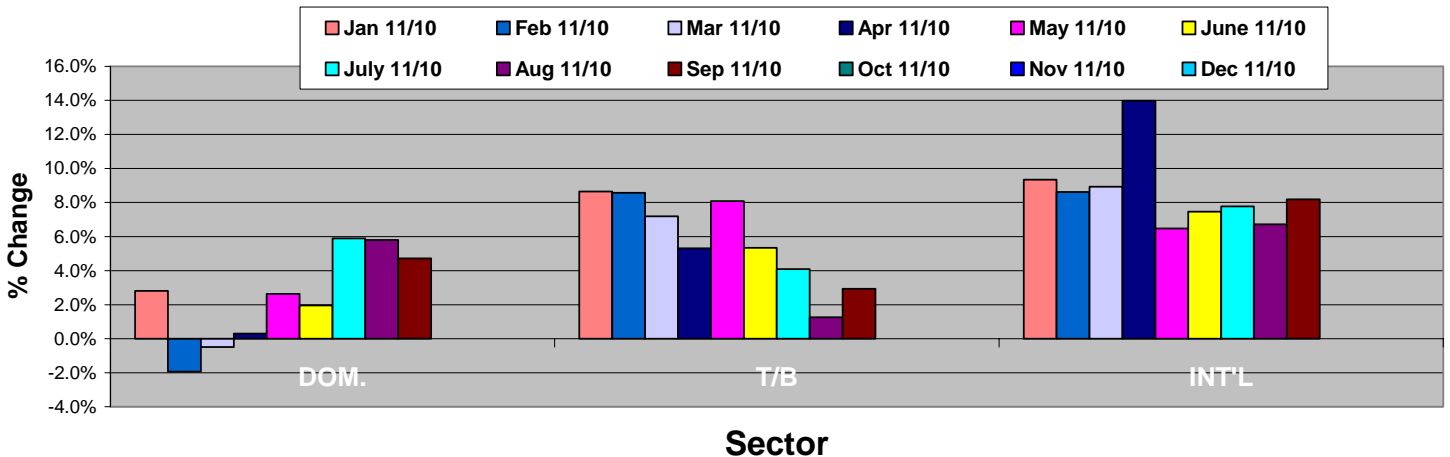


TORONTO PEARSON INTERNATIONAL AIRPORT 2010 TOTAL PASSENGERS									
MONTH		DOM.	10/09	T/B	10/09	INT'L	10/09	Total	10/09
JAN	T1	676,153		414,793		496,159		1,587,105	
	T3	224,631		238,725		410,441		873,797	
Ttl JAN		900,784	-2.4%	653,518	-4%	906,600	4%	2,460,902	-1%
FEB	T1	656,460		406,594		434,356		1,497,410	
	T3	230,947		228,457		374,175		833,579	
Ttl FEB		887,407	0.0%	635,051	-4.6%	808,531	3.8%	2,330,989	0.0%
Mar	T1	735,284		497,501		519,624		1,752,409	
	T3	249,821		284,856		405,707		940,384	
Ttl Mar		985,105	1.6%	782,357	3.8%	925,331	7.0%	2,692,793	4.1%
Apr	T1	719,708		470,943		487,789		1,678,440	
	T3	256,659		275,068		319,174		850,901	
Ttl Apr		976,367	-3.1%	746,011	6.2%	806,963	7.1%	2,529,341	2.7%
May	T1	791,221		440,803		523,825		1,755,849	
	T3	303,476		260,821		321,669		885,966	
Ttl May		1,094,697	0.6%	701,624	11.5%	845,494	16.7%	2,641,815	8.2%
June	T1	839,661		457,469		546,221		1,843,351	
	T3	312,026		238,008		345,625		895,659	
Ttl June		1,151,687	1.5%	695,477	11.4%	891,846	14.5%	2,739,010	7.9%
July	T1	913,603		500,003		624,034		2,037,640	
	T3	354,079		282,245		429,755		1,066,079	
Ttl July		1,267,682	-0.3%	782,248	10.8%	1,053,789	15.2%	3,103,719	7.3%
Aug	T1	956,610		512,194		633,792		2,102,596	
	T3	362,154		303,370		431,775		1,097,299	
Ttl Aug		1,318,764	-3.7%	815,564	11.8%	1,065,567	11.4%	3,199,895	4.7%
Sep	T1	796,388		430,046		533,966		1,760,400	
	T3	305,227		249,129		347,308		901,664	
Ttl Sep		1,101,615	0.6%	679,175	11.9%	881,274	11.4%	2,662,064	6.8%
Oct	T1	786,679		465,818		487,634		1,740,131	
	T3	307,297		269,910		314,889		892,096	
Ttl Oct		1,093,976	1.1%	735,728	11.8%	802,523	17.6%	2,632,227	8.6%
Nov	T1	684,056		456,046		415,250		1,555,352	
	T3	257,243		216,902		284,808		758,953	
Ttl Nov		941,299	3.1%	672,948	7.0%	700,058	9.8%	2,314,305	6.2%
Dec	T1	743,602		493,077		512,527		1,749,206	
	T3	267,812		237,055		376,762		881,629	
Ttl Dec		1,011,414	2.4%	730,132	6.4%	889,289	10.0%	2,630,835	6.0%
Grand Ttl	T1	9,299,425		5,545,081		6,215,383		21,059,889	
	T3	3,431,372		3,083,770		4,362,864		10,878,006	
Grand Ttl		12,730,797	0.0%	8,628,851	6.9%	10,578,247	10.6%	31,937,895	5.2%

TORONTO PEARSON INTERNATIONAL AIRPORT 2011 TOTAL PASSENGERS									
MONTH		DOM.	11/10	T/B	11/10	INT'L	11/10	Total	11/10
JAN	T1	685,107		490,797		536,007		1,711,911	
	T3	240,954		218,988		455,572		915,514	
Ttl JAN		926,061	2.8%	709,785	8.7%	991,579	9.3%	2,627,425	6.8%
FEB	T1	633,906		476,556		466,966		1,577,428	
	T3	236,365		212,897		411,312		860,574	
Ttl FEB		870,271	-1.9%	689,453	8.6%	878,278	8.6%	2,438,002	4.6%
Mar	T1	716,097		579,409		550,470		1,845,976	
	T3	264,214		258,755		450,919		980,888	
Ttl Mar		980,311	-0.5%	838,164	7.2%	1,008,389	8.9%	2,826,864	5.0%
Apr	T1	714,515		550,726		533,768		1,799,009	
	T3	264,778		234,896		385,944		885,618	
Ttl Apr		979,293	0.3%	785,622	5.3%	919,712	14.0%	2,684,627	6.1%
May	T1	792,558		525,932		525,246		1,843,736	
	T3	330,965		232,456		375,048		938,469	
Ttl May		1,123,523	2.6%	758,388	8.1%	900,294	6.5%	2,782,205	5.3%
June	T1	825,433		523,639		550,334		1,899,406	
	T3	348,837		208,932		408,063		965,832	
Ttl June		1,174,270	2.0%	732,571	5.3%	958,397	7.5%	2,865,238	4.6%
July	T1	943,818		565,844		643,175		2,152,837	
	T3	398,540		248,336		492,436		1,139,312	
Ttl July		1,342,358	5.9%	814,180	4.1%	1,135,611	7.8%	3,292,149	6.1%
Aug	T1	985,827		580,170		642,889		2,208,886	
	T3	409,317		245,695		494,236		1,149,248	
Ttl Aug		1,395,144	5.8%	825,865	1.3%	1,137,125	6.7%	3,358,134	4.9%
Sep	T1	823,298		497,088		547,512		1,867,898	
	T3	330,232		201,676		406,290		938,198	
Ttl Sep		1,153,530	4.7%	698,764	2.9%	953,802	8.2%	2,806,096	5.4%
Oct	T1								
	T3								
Ttl Oct									
Nov	T1								
	T3								
Ttl Nov									
Dec	T1								
	T3								
Ttl Dec									
Grand Ttl	T1	7,120,559		4,790,161		4,996,367		16,907,087	
	T3	2,824,202		2,062,631		3,886,820		8,773,653	
Grand Ttl		9,944,761		6,852,792		8,883,187		25,680,740	

Notes: Above data is preliminary and subject to subsequent adjustments as new information is obtained.

### Annual Percentage Changes by month and sector



# Airport Activity Statistics Report

## Events

- 25 Gates on Pier Hammerhead F of T1 opened Jan 31, 2007
- T2 ceased operation January 30, 2007 at 9:30 pm.(East Hold continues to operate from T1)
- The New T1 1 opened 10 new gates November 1, 2005
- The New T1 1 opened on April 6, 2004 and T1Old ceased operating on the same day.
- Passenger comparisons shown in the Passengers by Terminal reflect T1Old vs. T1 (New) within the T1 table.
- Passengers using the IFT (Infield Terminal) previously processed at T1Old are now processed at T1 and are included in the same comparison table

## Moves

- November 2010 – Continental moved to T1
- May 16, 2008 – Air India moved to T1
- May 2, 2008 – Icelandair begins operations at T1
- March 29, 2008 – US Air moved to T1
- June 22, 2005 - Westjet moved back to T3
- April 18, 2004 - Westjet moves from T3 to T2
- April 6, 2004 - Air Canada/Jazz Domestic and International operations transfer from T1 (Old) and T2 to T1 (New) along with other Star Alliance and other T1 (Old) carriers.
- June 2, 2003 - Tango moved from T3 to T2 and is a fare option for Air Canada's Domestic and some Transborder activities
- April - June 2000 - Canadian Airlines and its regional affiliates transferred Domestic and Transborder operations to T2 and International services to T1 as it merged with Air Canada. Carriers which had been operating in T1 transferred to T3 including Delta, USAir, Continental, and several international carriers. T2 International Operations moved to T1 (ACA, DLH, MXA, etc.)

## Traffic Impacts

- **June 13 – 16, 2011**, - Air Canada labor strike
- **June 25 – 27, 2010**, - G8/20 Leaders Summit.
- **January 31, 2010**, - NWA ceased operation to merged with Delta Airlines
- **December 25, 2009**, – Failed terrorist attempt on Delta flight from Amsterdam to Detroit leading to additional security restrictions on transborder air travel
- **April, 2009**, - H1N1 (Swine Flu) virus in Mexico. Resulted travel restriction around the world. Travel advisory to Canadians for Mexico issued
- **August 9, 2006**, - British and US airlines threatened – all carry-on screened
- Major thunderstorms hit GTA, **August, 2005**
- **August 2, 2005** – Air France A340 crashes. No fatalities
- **March 11, 2005** - Jetsgo declared protection from bankruptcy
- **April 2004** - WestJet increased operations at Toronto and cut back some service at Hamilton Airport
- Major blackout in Ontario and eastern seaboard of the USA – **August 14-16, 2003**
- World Health Organization (WHO) imposes travel restriction to the Toronto area due to Severe Acute Respiratory Syndromes (SARS) April, 2003 until **July, 2003**
- War in Iraq – started **March 19, 2003** - ended mid **April 2003**, still occupied
- Major ice storms in Toronto and Eastern Canada - **April 3 - 4, 2003**
- Air Canada files for bankruptcy protection – **April 1, 2003**
- War in Iraq – started **March 19, 2003** - ended mid-**April 2003**, still occupied
- Canada 3000 shutdown **November 10, 2001**