

# International Arrivals to Ontario and Canada

Based on data provided by Statistics Canada

September 2010

Overnight arrivals to Ontario and the rest of Canada

	Ontario			Rest of CAN Change %	ON '10 Mkt share
	Sep '09	Sep '10	Change %		
<b>TOTAL</b>	710,307	728,313	2.5	4.1	43.2
<b>U.S.</b>	537,427	549,724	2.3	0.3	46.2
<b>Overseas</b>	172,880	178,589	3.3	12.6	35.9

	Ontario			Rest of CAN Change %	ON '10 Mkt share
	YTD '09	YTD '10	Change %		
<b>TOTAL</b>	5,975,596	5,970,146	-0.1	3.2	45.4
<b>U.S.</b>	4,728,563	4,646,409	-1.7	1.3	48.5
<b>Overseas</b>	1,247,033	1,323,737	6.2	7.7	37.1

Key overseas markets - Arrivals to Ontario and the rest of Canada

Country	Ontario			Rest of CAN Change %	ON '10 Mkt share
	Sep '09	Sep '10	Change %		
<b>UK</b>	33,487	32,113	-4.1	12.7	34.6
<b>Germany</b>	15,655	15,178	-3.0	20.5	29.9
<b>France</b>	11,310	13,623	20.5	7.1	24.0
<b>Japan</b>	13,029	10,909	-16.3	8.6	34.1
<b>Caribbean</b>	8,848	9,084	2.7	-7.3	77.7
<b>China</b>	8,275	8,963	8.3	20.3	38.5
<b>India</b>	5,342	6,556	22.7	8.4	53.6
<b>Brazil</b>	4,224	5,582	32.1	56.0	66.2
<b>Australia</b>	4,715	5,281	12.0	21.6	18.2
<b>South Korea</b>	5,500	4,410	-19.8	31.1	29.7
<b>Netherlands</b>	4,801	4,286	-10.7	-2.1	35.2
<b>Israel</b>	3,840	4,277	11.4	7.4	67.1
<b>Italy</b>	4,678	4,234	-9.5	19.7	39.4
<b>Mexico</b>	3,767	4,232	12.3	-12.0	41.1
<b>Hong Kong</b>	2,914	3,368	15.6	-5.2	35.0
<b>Spain</b>	4,751	3,346	-29.6	10.6	45.4
<b>Chile</b>	1,103	1,553	40.8	10.2	79.9
<b>UAE</b>	1,258	1,252	-0.5	8.5	68.0
<b>Argentina</b>	1,076	1,192	10.8	12.9	70.1

Country	Ontario			Rest of CAN Change %	ON '10 Mkt share
	YTD '09	YTD '10	Change %		
<b>UK</b>	237,274	234,040	-1.4	3.3	38.9
<b>Germany</b>	96,286	101,570	5.5	11.3	34.9
<b>Caribbean</b>	77,029	83,015	7.8	-1.4	76.7
<b>France</b>	60,242	65,267	8.3	6.6	18.0
<b>Japan</b>	51,140	62,325	21.9	21.7	32.4
<b>India</b>	42,896	56,043	30.6	10.8	50.8
<b>China</b>	44,914	55,052	22.6	19.6	34.5
<b>Brazil</b>	35,270	43,800	24.2	41.6	70.0
<b>Italy</b>	40,937	42,468	3.7	20.8	46.6
<b>South Korea</b>	39,632	41,689	5.2	25.1	30.0
<b>Mexico</b>	55,935	37,668	-32.7	-33.4	36.4
<b>Australia</b>	31,567	35,044	11.0	14.9	17.8
<b>Israel</b>	33,546	34,886	4.0	9.7	68.0
<b>Netherlands</b>	34,428	31,773	-7.7	5.8	33.2
<b>Hong Kong</b>	25,295	29,808	17.8	1.6	31.2
<b>Spain</b>	32,724	29,411	-10.1	0.5	48.4
<b>UAE</b>	12,783	14,057	10.0	-5.3	68.6
<b>Chile</b>	7,892	10,702	35.6	37.3	76.7
<b>Argentina</b>	7,878	9,115	15.7	4.1	67.6

\*Ranked by 2010 arrivals to Ontario

## U.S. Summary

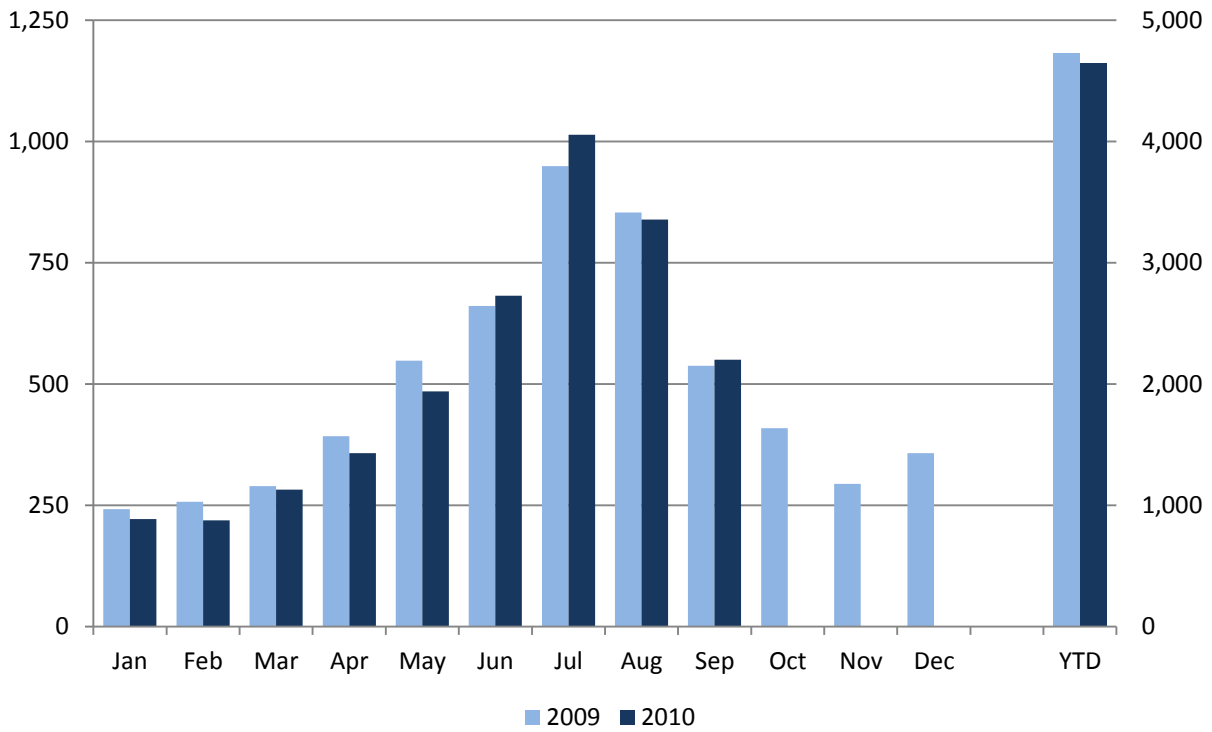
U.S. arrivals to Ontario (change % from 2009 shown underneath in italics)

	Jan	Feb	Mar	Apr	May	Jun	Jul	Aug	Sep	Oct	Nov	Dec	YTD
<b>Overnight</b>	221,380	218,514	282,373	357,497	484,497	681,844	1,013,486	839,027	549,724				4,646,409
	<i>-8.5</i>	<i>-14.8</i>	<i>-2.3</i>	<i>-8.9</i>	<i>-11.6</i>	<i>3.2</i>	<i>6.8</i>	<i>-1.7</i>	<i>2.3</i>				<i>-1.7</i>
<b>Automobile</b>	130,846	132,953	169,653	227,924	336,450	478,908	772,123	628,500	374,606				3,251,925
	<i>-13.1</i>	<i>-19.9</i>	<i>-10.1</i>	<i>-15.8</i>	<i>-16.5</i>	<i>0.1</i>	<i>5.7</i>	<i>-4.6</i>	<i>-0.5</i>				<i>-5.0</i>
<b>Non-auto</b>	90,534	85,561	112,720	129,573	148,047	202,936	241,363	210,527	175,118				1,394,484
	<i>-0.9</i>	<i>-5.7</i>	<i>12.3</i>	<i>6.5</i>	<i>2.1</i>	<i>11.4</i>	<i>10.5</i>	<i>7.9</i>	<i>8.7</i>				<i>6.8</i>
<b>Same day</b>	347,027	319,530	370,491	397,242	458,594	512,918	647,049	620,171	468,780				4,143,657
	<i>-15.6</i>	<i>-20.3</i>	<i>-19.7</i>	<i>-19.8</i>	<i>-23.1</i>	<i>14.5</i>	<i>9.4</i>	<i>-0.4</i>	<i>0.6</i>				<i>-7.8</i>
<b>TOTAL</b>	568,407	538,044	652,864	754,739	943,091	1,194,762	1,660,535	1,459,198	1,018,504				8,790,066
	<i>-12.9</i>	<i>-18.2</i>	<i>-13.0</i>	<i>-15.0</i>	<i>-17.6</i>	<i>7.8</i>	<i>7.8</i>	<i>-1.1</i>	<i>1.5</i>				<i>-4.7</i>

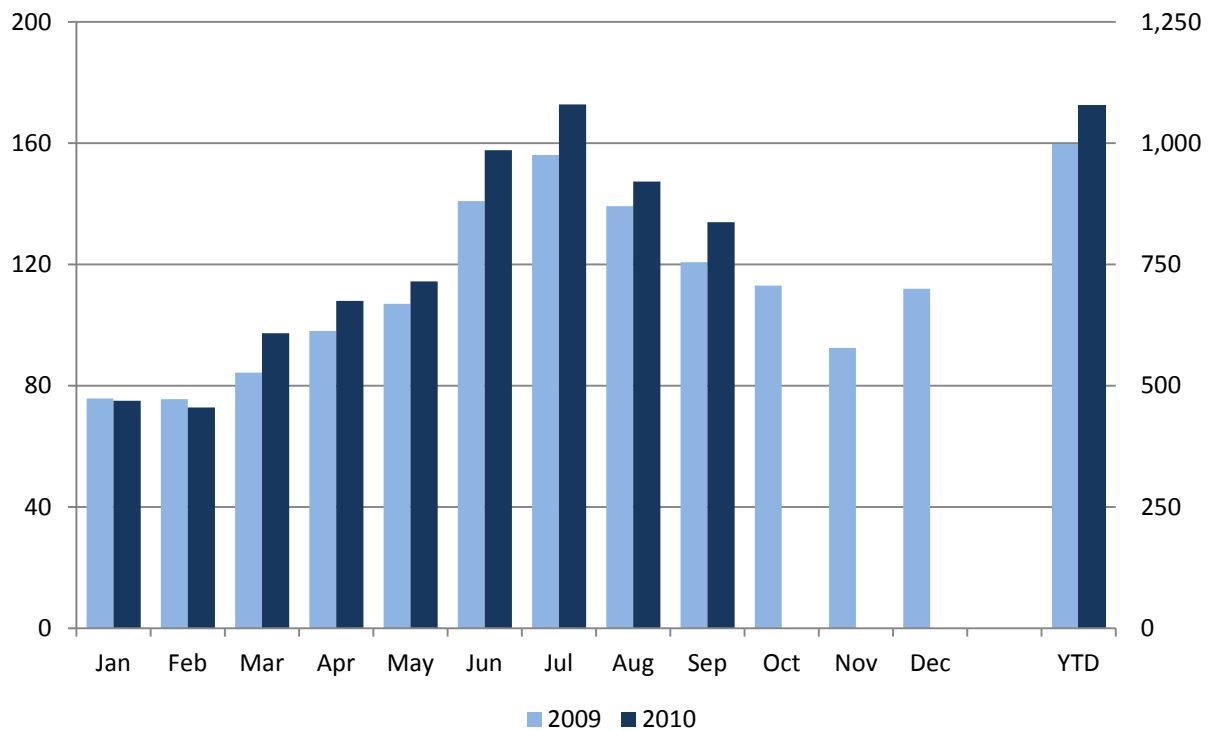
U.S. air arrivals to Toronto (change % from 2009 shown underneath in italics)

	Jan	Feb	Mar	Apr	May	Jun	Jul	Aug	Sep	Oct	Nov	Dec	YTD
<b>Pearson</b>	72,339	69,665	93,029	103,572	109,745	152,151	166,002	140,802	127,820				1,035,125
	<i>-2.0</i>	<i>-5.9</i>	<i>13.1</i>	<i>8.0</i>	<i>4.8</i>	<i>9.8</i>	<i>8.3</i>	<i>3.3</i>	<i>9.1</i>				<i>6.0</i>
<b>Island</b>	2,643	3,109	4,248	4,415	4,629	5,486	6,801	6,532	6,126				43,989
	<i>36.0</i>	<i>112.5</i>	<i>110.7</i>	<i>108.9</i>	<i>104.1</i>	<i>140.0</i>	<i>146.5</i>	<i>124.4</i>	<i>70.9</i>				<i>106.1</i>
<b>TOTAL</b>	74,982	72,774	97,277	107,987	114,374	157,637	172,803	147,334	133,946				1,079,114
	<i>-1.0</i>	<i>-3.6</i>	<i>15.5</i>	<i>10.1</i>	<i>6.9</i>	<i>11.9</i>	<i>10.7</i>	<i>5.8</i>	<i>10.9</i>				<i>8.2</i>

### U.S. Overnight Arrivals to Ontario (thousands)



### U.S. Air Arrivals to Toronto (thousands)



## Overseas Summary

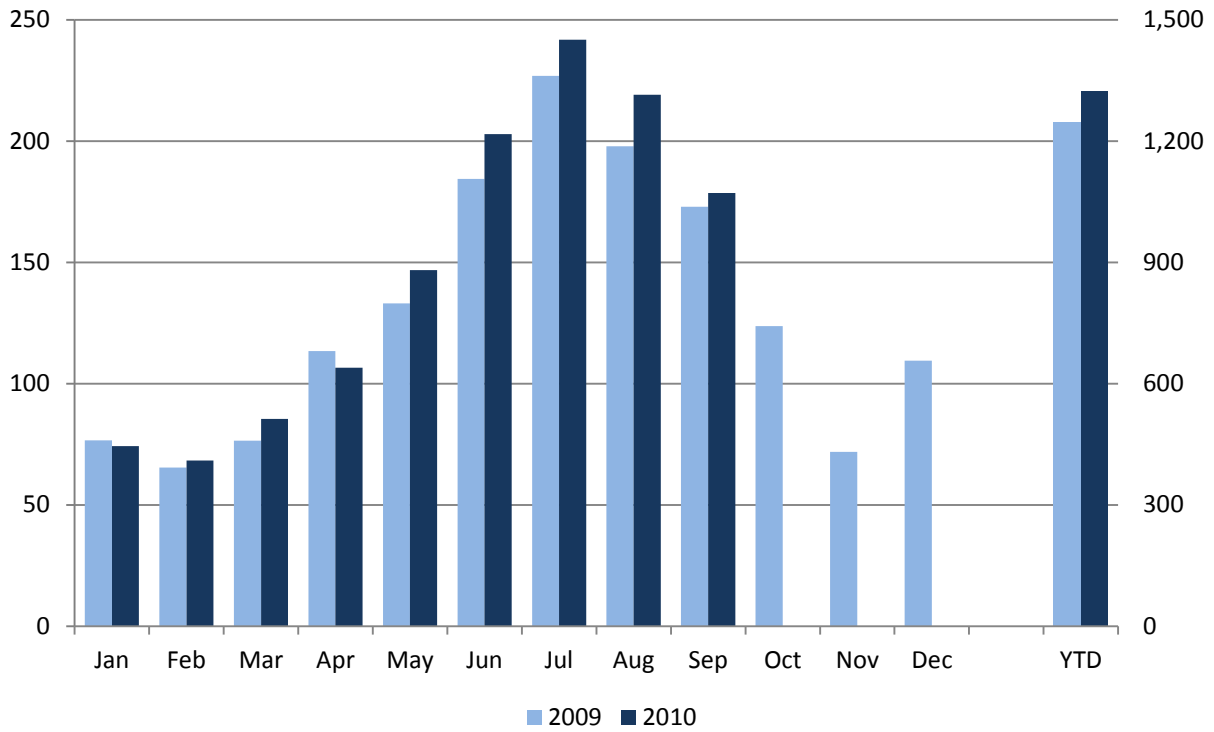
Overseas arrivals to Ontario (change % from 2009 shown underneath in italics)

	Jan	Feb	Mar	Apr	May	Jun	Jul	Aug	Sep	Oct	Nov	Dec	YTD
<b>Overnight</b>	74,201	68,283	85,487	106,601	146,782	202,889	241,787	219,087	178,589				1,323,737
	<i>-3.1</i>	<i>4.4</i>	<i>11.9</i>	<i>-6.0</i>	<i>10.3</i>	<i>10.0</i>	<i>6.5</i>	<i>10.7</i>	<i>3.3</i>				6.2
<b>Same day</b>	1,805	973	1,888	3,049	4,237	3,610	6,192	7,513	3,490				32,757
	<i>-10.7</i>	<i>-35.0</i>	<i>-15.5</i>	<i>-13.5</i>	<i>6.7</i>	<i>-19.3</i>	<i>1.6</i>	<i>14.1</i>	<i>-40.4</i>				-9.6
<b>TOTAL</b>	76,006	69,256	87,375	109,650	151,019	206,499	247,979	226,600	182,079				1,356,495
	<i>-3.3</i>	<i>3.5</i>	<i>11.1</i>	<i>-6.2</i>	<i>10.1</i>	<i>9.3</i>	<i>6.4</i>	<i>10.8</i>	<i>1.9</i>				5.7

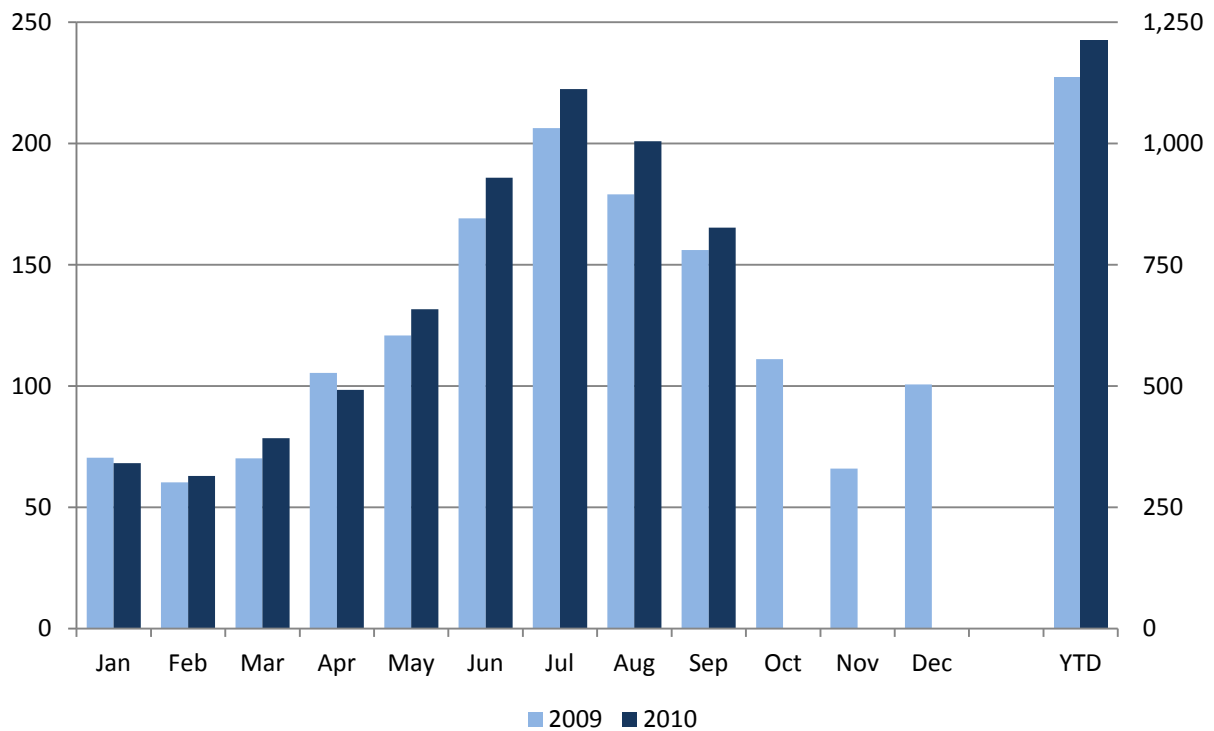
Overseas air arrivals to Toronto (change % from 2009 shown underneath in italics)

	Jan	Feb	Mar	Apr	May	Jun	Jul	Aug	Sep	Oct	Nov	Dec	YTD
<b>Direct</b>	48,377	49,583	60,043	70,658	101,078	142,407	173,399	146,641	123,142				915,328
	<i>-8.1</i>	<i>3.8</i>	<i>9.0</i>	<i>-12.6</i>	<i>2.7</i>	<i>1.5</i>	<i>1.9</i>	<i>2.5</i>	<i>1.7</i>				0.7
<b>Via U.S.</b>	19,758	13,271	18,349	27,752	30,528	43,491	49,060	54,234	42,141				298,584
	<i>11.1</i>	<i>6.6</i>	<i>21.3</i>	<i>13.2</i>	<i>36.5</i>	<i>51.1</i>	<i>36.0</i>	<i>51.0</i>	<i>20.6</i>				31.0
<b>TOTAL</b>	68,135	62,854	78,392	98,410	131,606	185,898	222,459	200,875	165,283				1,213,912
	<i>-3.2</i>	<i>4.4</i>	<i>11.7</i>	<i>-6.6</i>	<i>9.0</i>	<i>10.0</i>	<i>7.9</i>	<i>12.2</i>	<i>5.9</i>				6.7

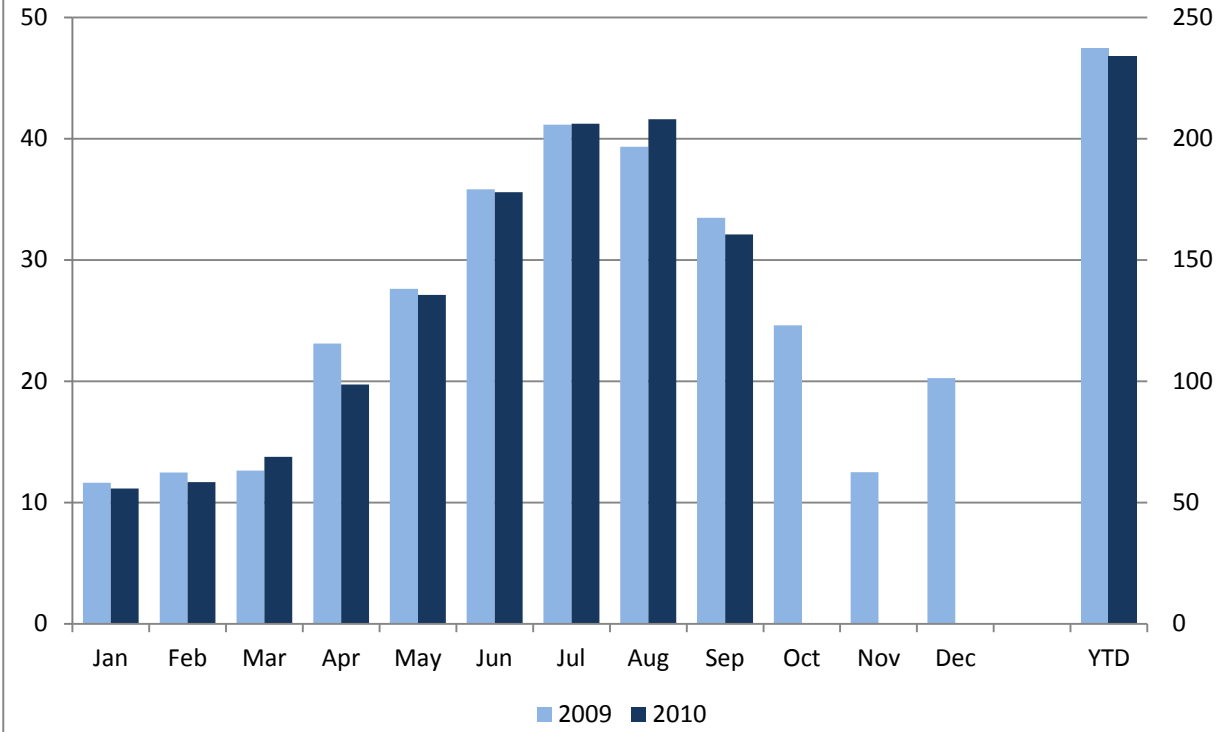
**Overseas Overnight Arrivals to ON (thousands)**



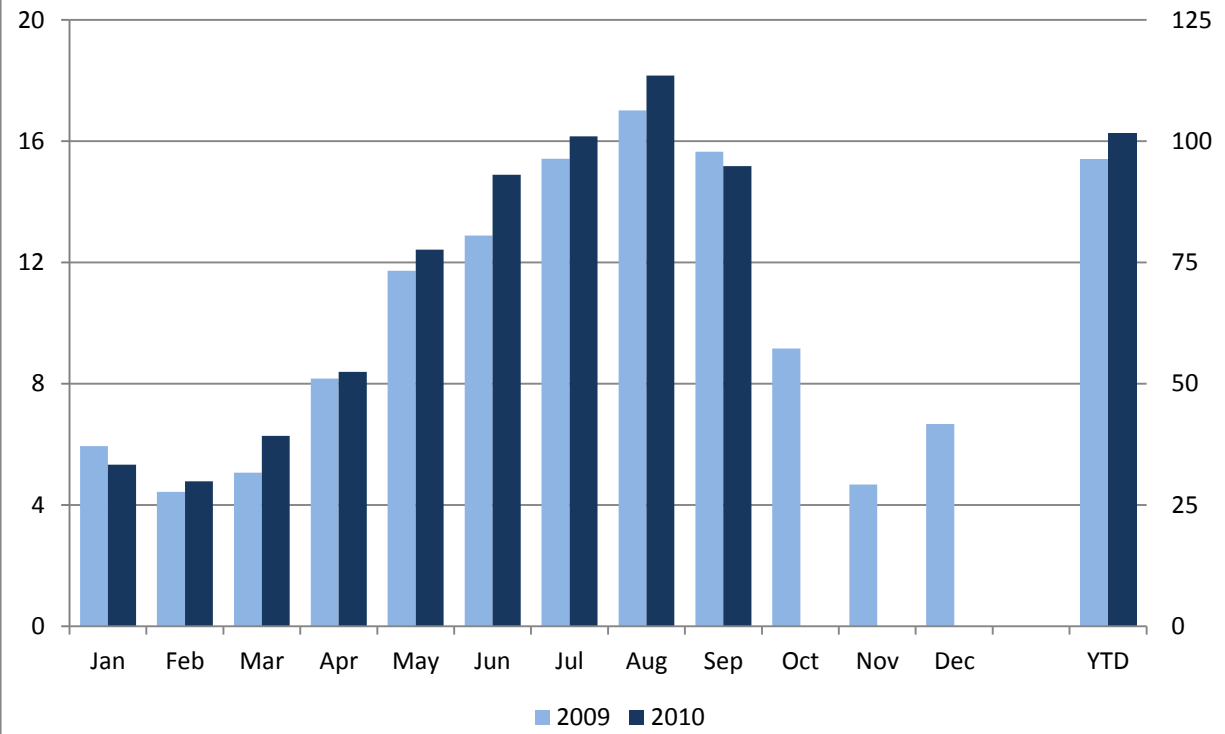
**Overseas Air Arrivals to Toronto (thousands)**



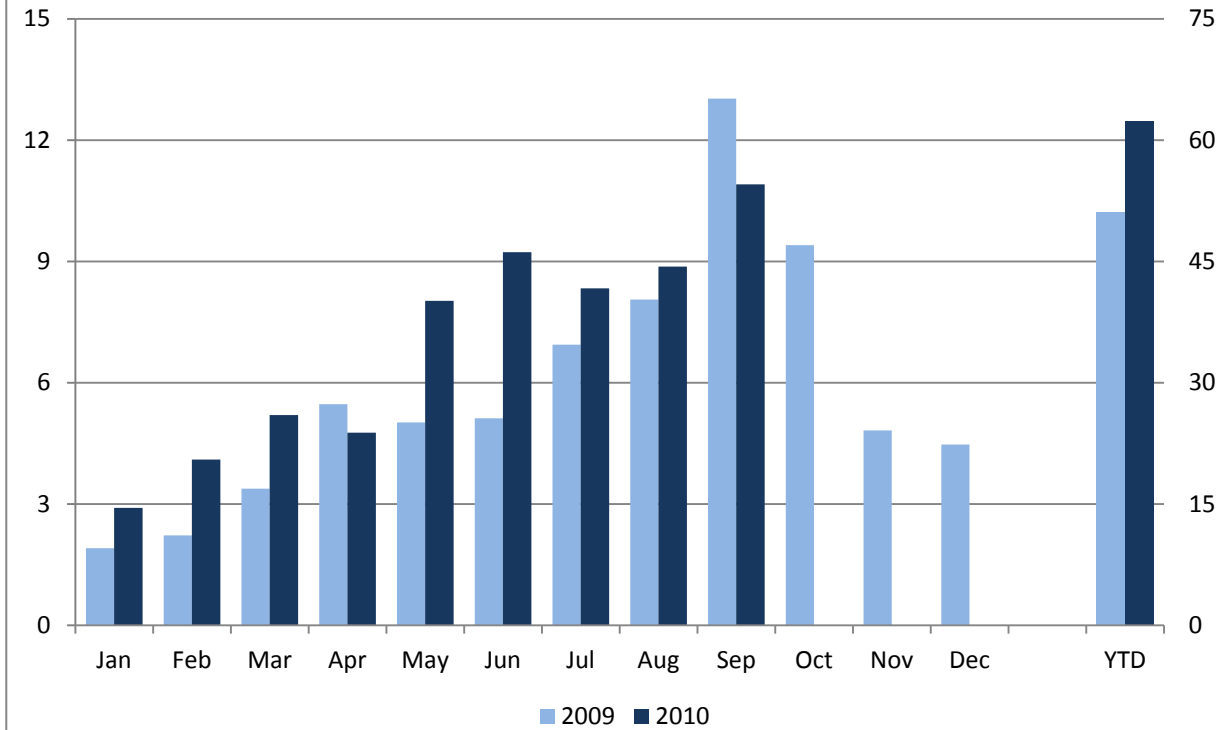
**UK - Arrivals to Ontario (thousands)**



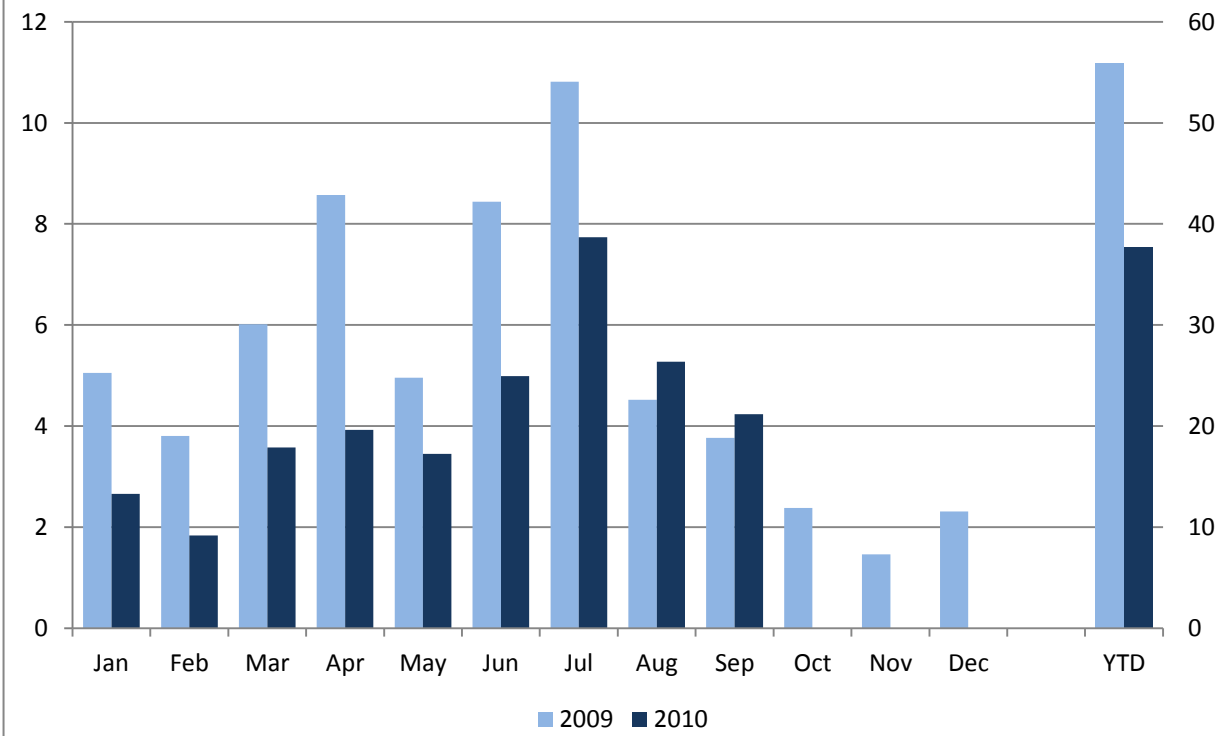
**Germany - Arrivals to Ontario (thousands)**



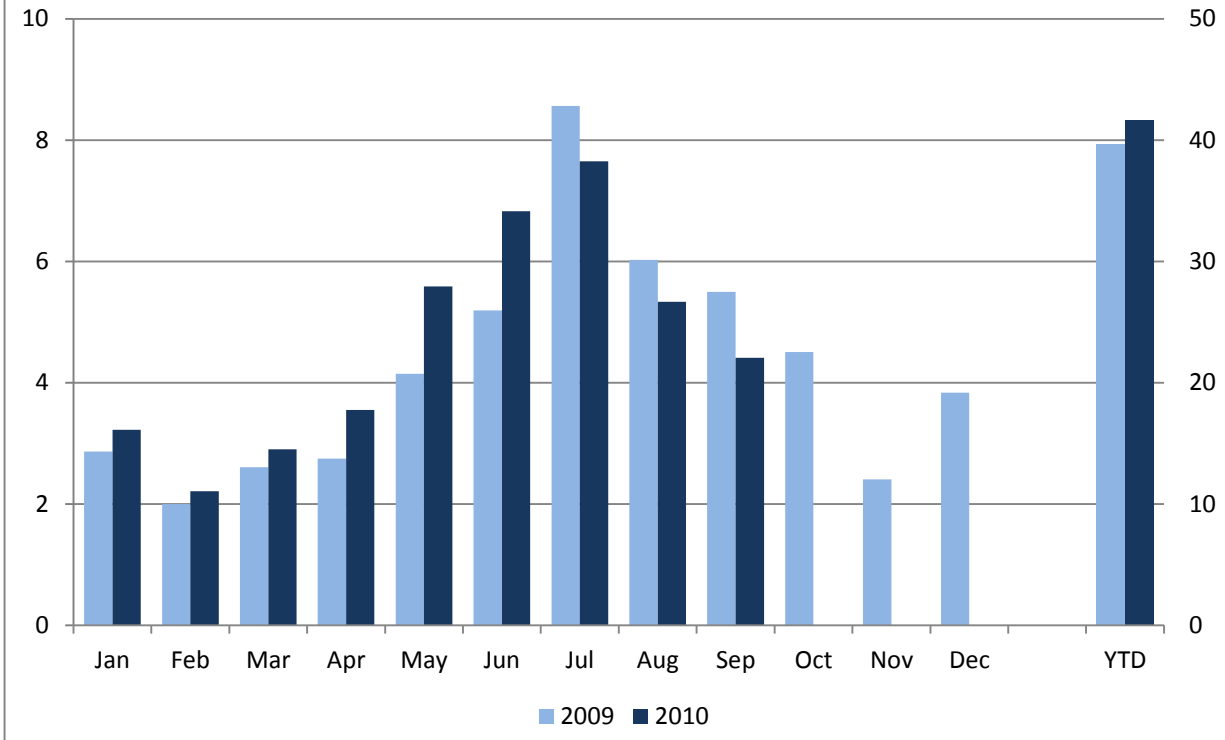
### Japan - Arrivals to Ontario (thousands)



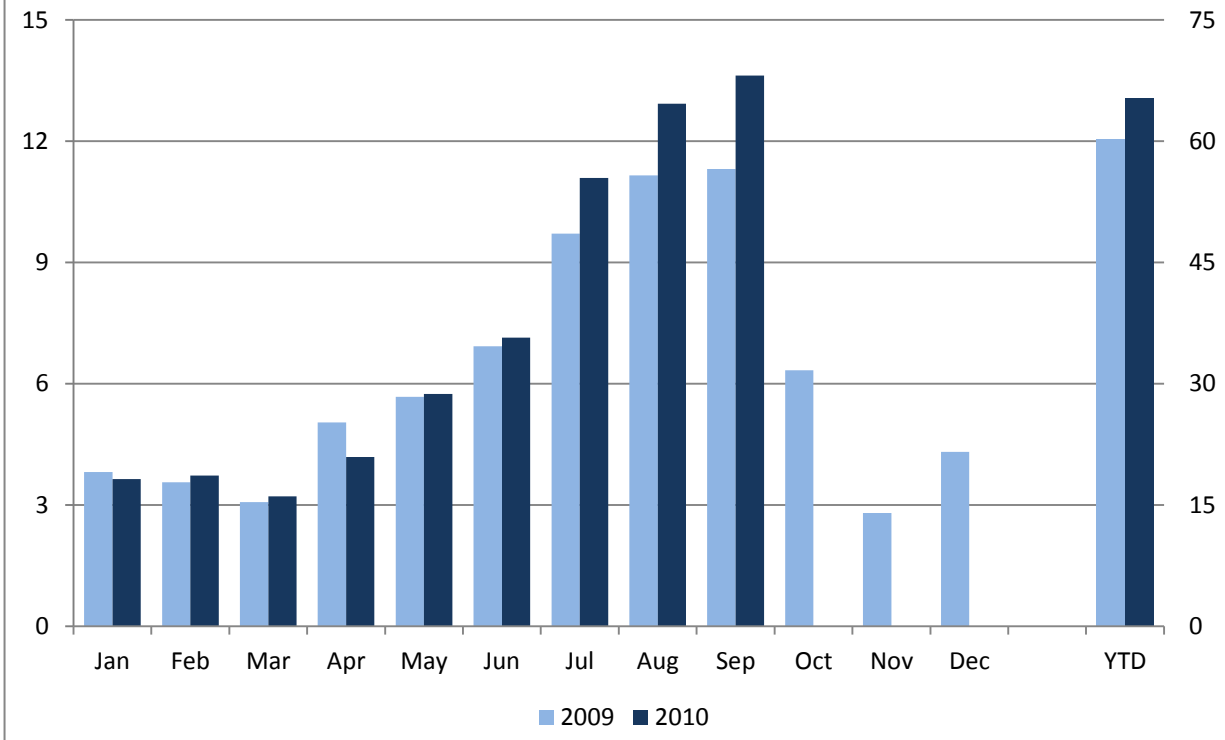
### Mexico - Arrivals to Ontario (thousands)



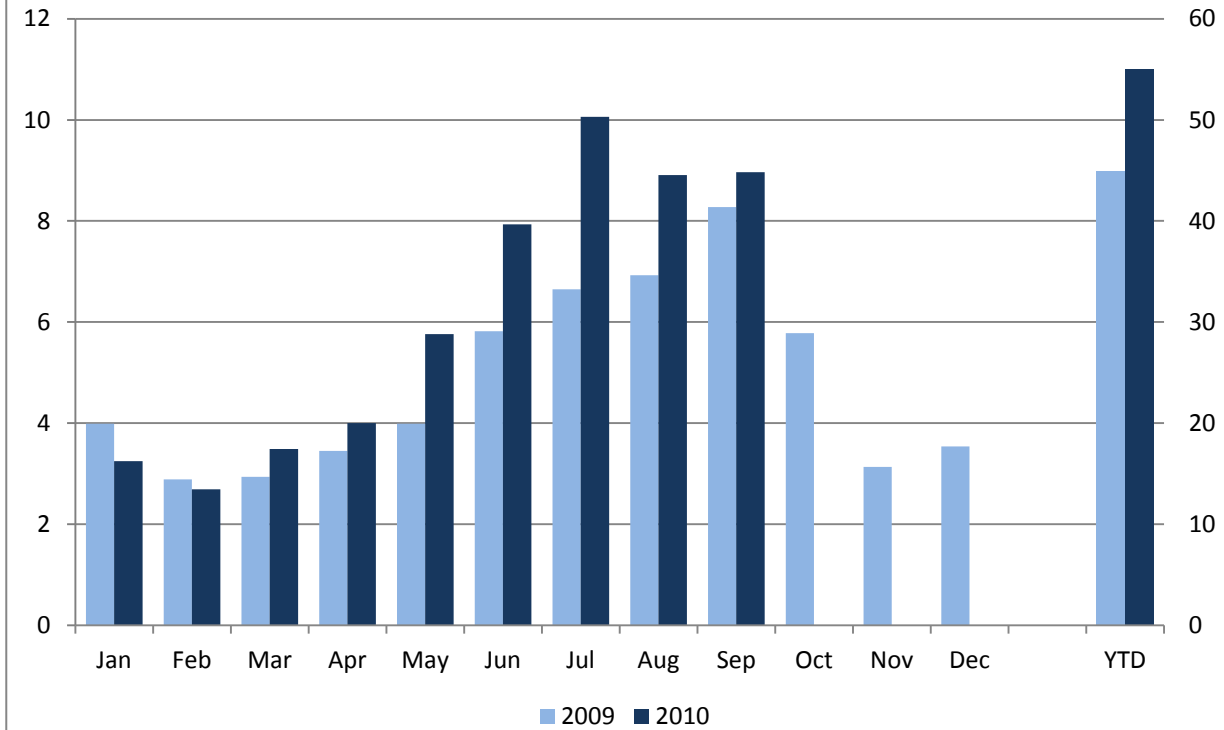
### South Korea - Arrivals to Ontario (thousands)



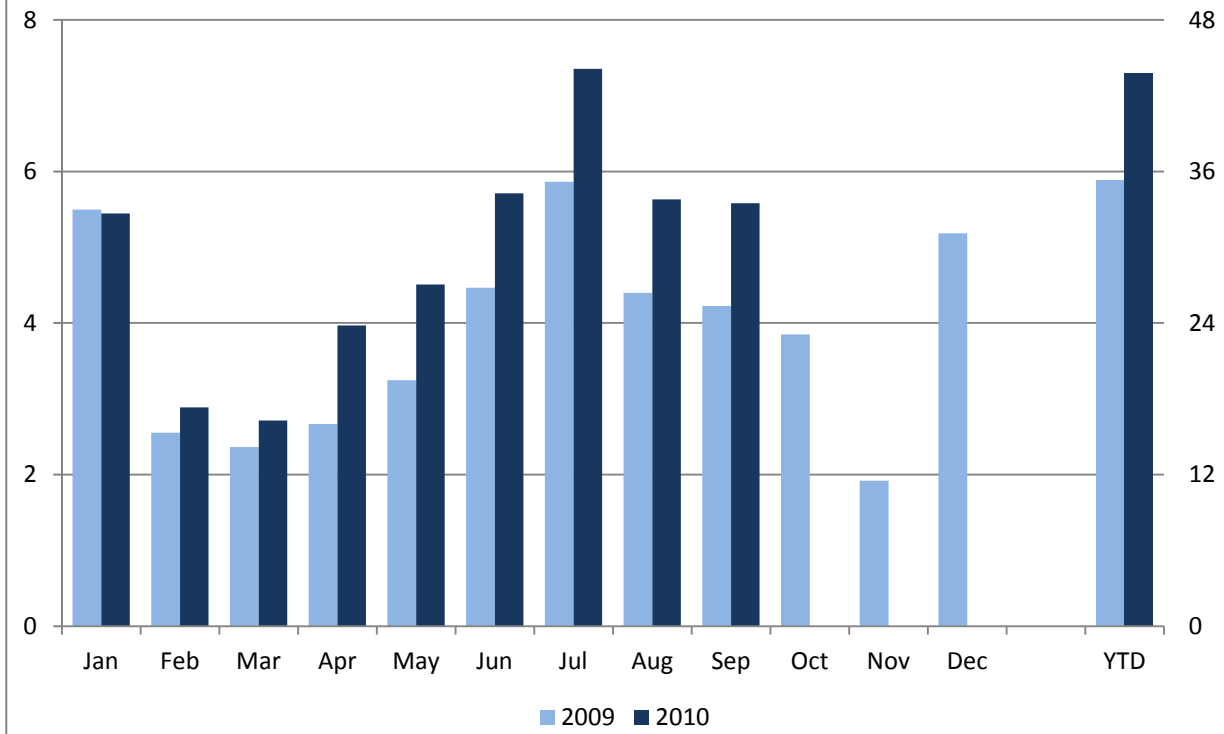
### France - Arrivals to Ontario (thousands)



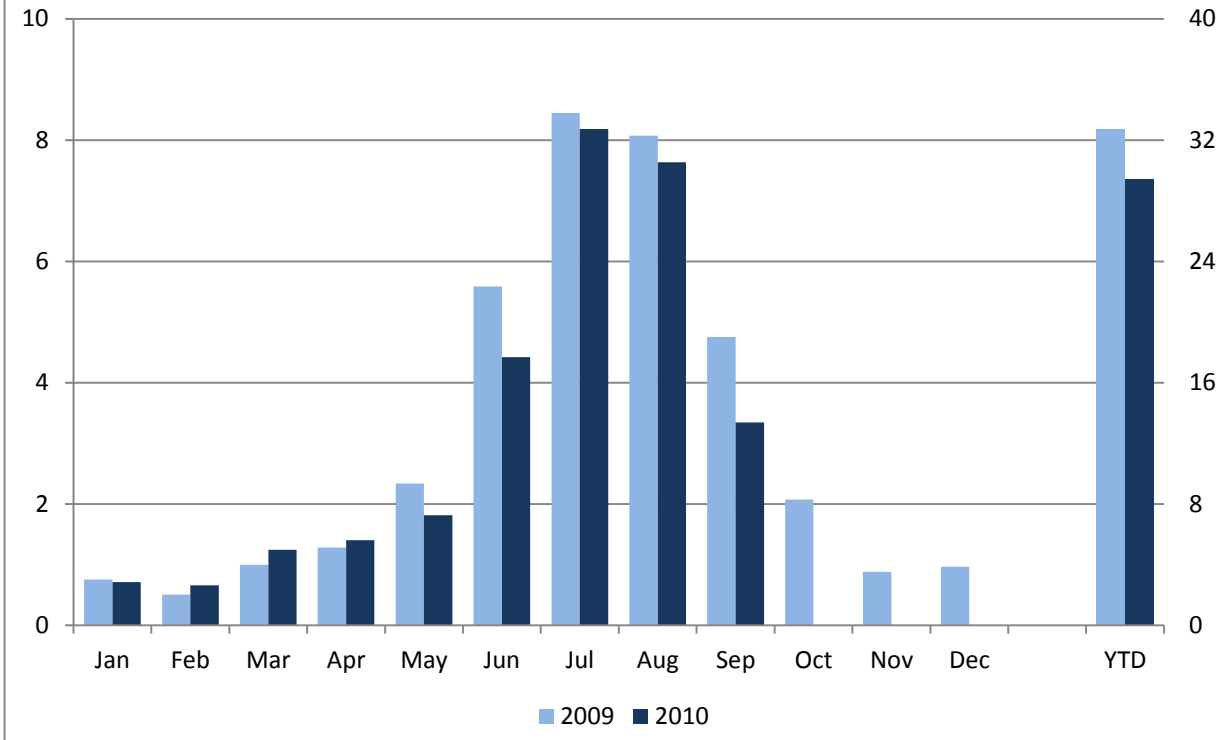
**China - Arrivals to Ontario (thousands)**



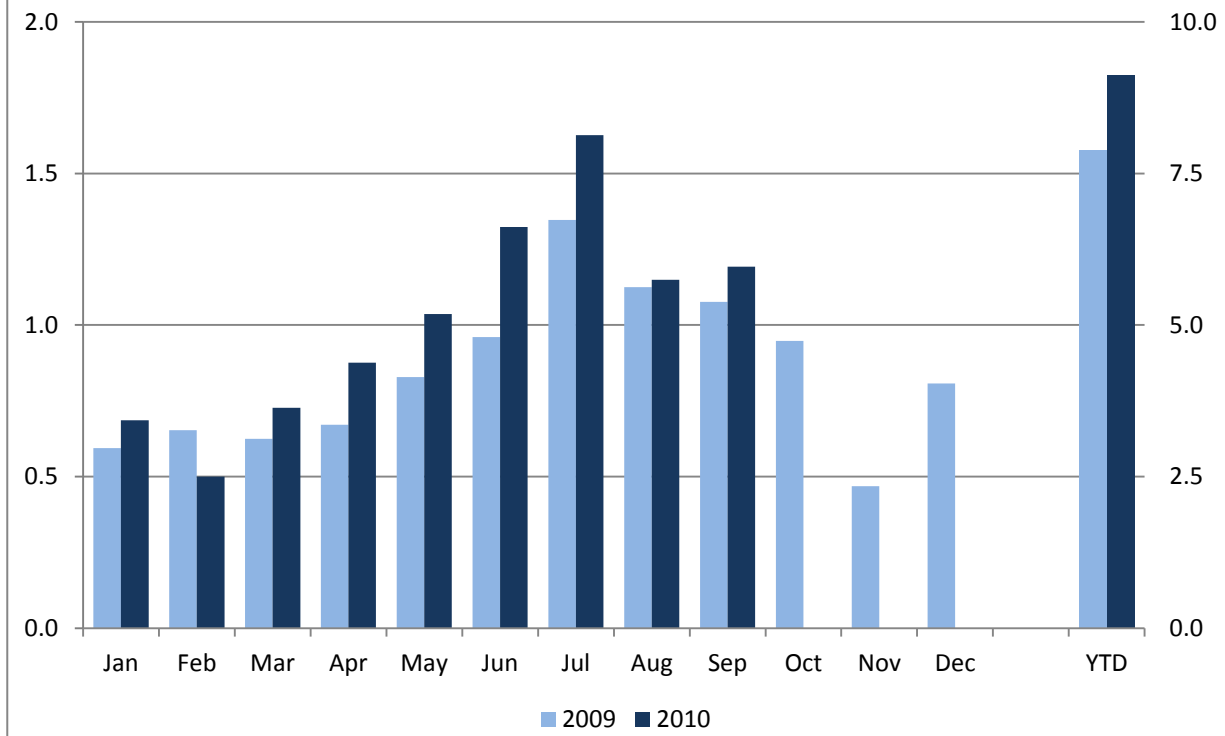
**Brazil - Arrivals to Ontario (thousands)**



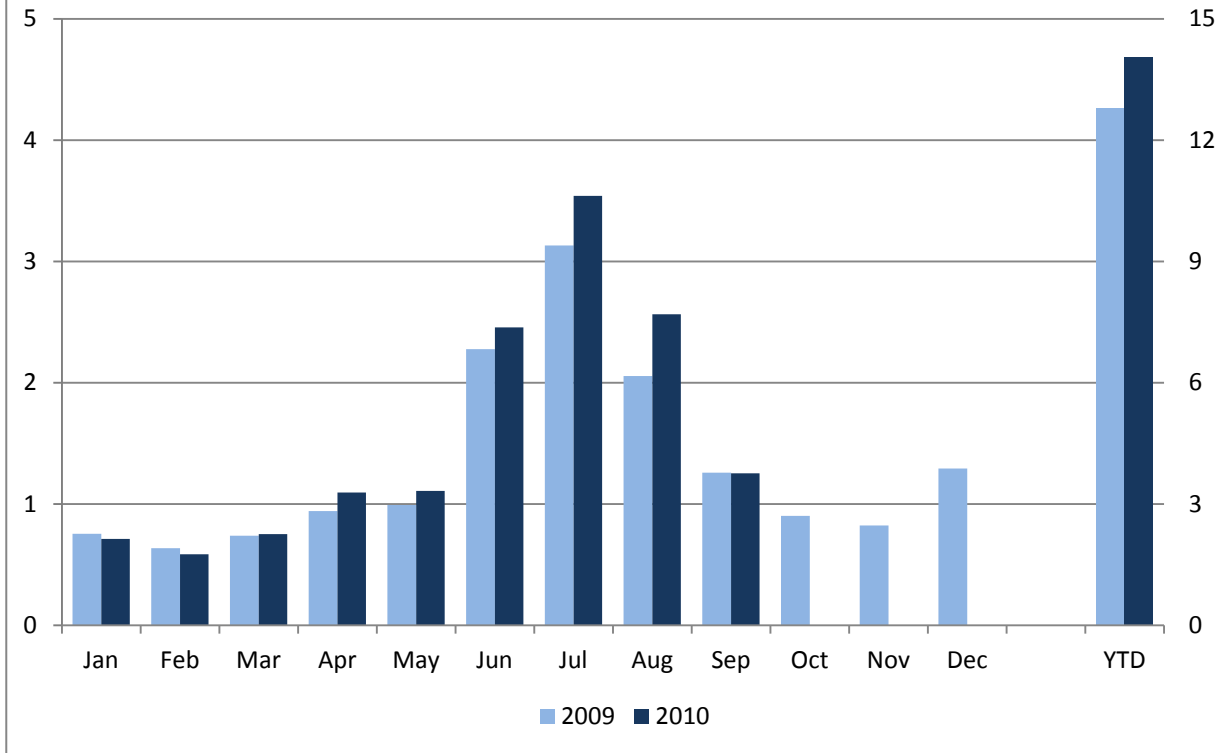
**Spain - Arrivals to Ontario (thousands)**



**Argentina - Arrivals to Ontario (thousands)**



**UAE - Arrivals to Ontario (thousands)**



**Chile - Arrivals to Ontario (thousands)**

