



Greater Toronto Airports Authority
Memorandum

External Report

To :
From : Faraz Salim
Date : May 11, 2015
RE: AVIATION ACTIVITY REPORT – **March, 2015**

The March 2015 Aviation Activity Report is now available for your information and reference.

Overall passenger traffic at Toronto Pearson in March was 3.4 million, representing an increase of 7.8% compared to March 2014. For YTD 2015, passenger numbers were 9.4 million, an increase of 7.1% over the same period in 2014.

All three sectors, DOM/TB/INT, showed continuing strong traffic growth of 6.3%/7.3%/9.8% respectively in March. All three sectors have shown YTD growth of 4.8%/7.2%/9.3% respectively.

A total of 36,644 aircraft arrivals and departures operated at Toronto Pearson in March, representing a - 2.3% increase from March 2014 (and YTD 2015 growth of +1.4%).

For **arrivals (>19 tonnes, ATB)**, seat growth was 6.3% for March / 5.1% YTD and MTOW 6.6%/5.9% respectively.

The following table shows the March and YTD 2015 vs. 2014 growth for key activities (**All Terminals, all weights**):

Activity	Passenger	Arr. Seats	Arr. MTOW	Movements
March	7.8%	6.5%	6.8%	+2.3%
YTD 2015	7.1%	5.3%	6.0%	+1.4%

Faraz Salim
Manager – Decision Support
Finance and Treasury
Phone: 416-776-3858 Cell: 647-382-1769
fax 416-776-4168
faraz.salim@gtaa.com



TORONTO PEARSON AVIATION ACTIVITY REPORT

March, 2015

GENERAL RELEASE

Business Optimization

**TORONTO PEARSON INTERNATIONAL AIRPORT
AIRPORT ACTIVITY REPORT
REVENUE AND NON REVENUE PASSENGERS**

March-15

Actual As of: 23-Apr-15

15/14

(B)

(A) / (B)

(A)

15/14

BUDGET

Annual

SECTOR

2015

2014

% AAGR

SECTOR

2015

2014

% AAGR

2014

AAGR

TERMINAL ONE

TOTAL AIRPORT

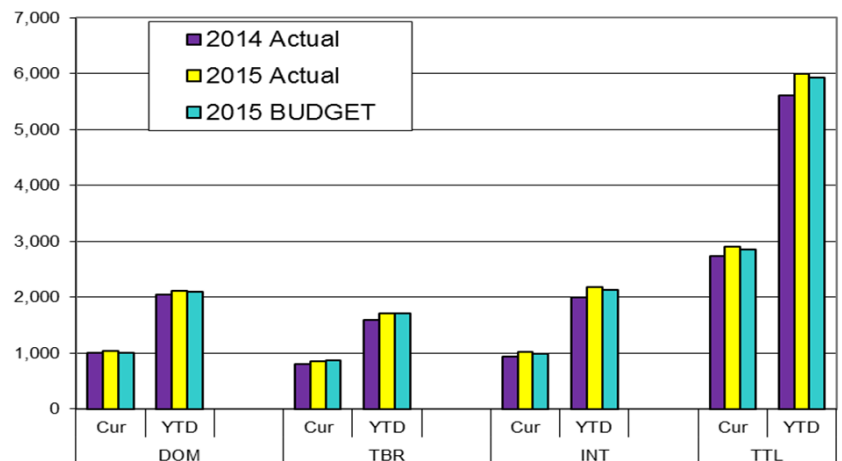
DOM	842,003	797,748	5.5%
YTD	2,372,468	2,260,899	4.9%
12 Mth Total	10,895,927	10,276,477	6.0%
TBR	725,559	687,511	5.5%
YTD	1,881,291	1,824,143	3.1%
12 Mth Total	7,180,318	6,885,229	4.3%
INT'L	730,316	643,031	13.6%
YTD	2,070,465	1,843,096	12.3%
12 Mth Total	8,019,311	7,157,075	12.0%
TOTAL	2,297,878	2,128,290	8.0%
YTD	6,324,224	5,928,138	6.7%
12 Mth Total	26,095,556	24,318,781	7.3%

DOM	1,164,197	1,095,580	6.26%	1,140,457	2.08%
YTD	3,282,215	3,131,429	4.82%	3,234,291	1.48%
12 Mth Total	15,342,912	14,527,258	5.61%	14,516,247	5.69%
TBR	1,027,174	957,383	7.29%	1,032,971	-0.56%
YTD	2,726,998	2,543,137	7.23%	2,740,547	-0.49%
12 Mth Total	10,689,931	9,903,433	7.94%	10,250,567	4.29%
INT'L	1,193,000	1,086,983	9.75%	1,174,020	1.62%
YTD	3,368,667	3,082,080	9.30%	3,303,595	1.97%
12 Mth Total	13,160,807	12,012,770	9.56%	12,991,083	1.31%
TOTAL	3,384,371	3,139,946	7.78%	3,347,448	1.10%
YTD	9,377,880	8,756,646	7.09%	9,278,433	1.07%
12 Mth Total	39,193,650	36,443,461	7.55%	37,757,897	3.80%

TERMINAL THREE

DOM	322,194	297,832	8.2%
YTD	909,747	870,530	4.5%
12 Mth Total	4,446,985	4,250,781	4.6%
TBR	301,615	269,872	11.8%
YTD	845,707	718,994	17.6%
12 Mth Total	3,509,613	3,018,204	16.3%
INT'L	462,684	443,952	4.2%
YTD	1,298,202	1,238,984	4.8%
12 Mth Total	5,141,496	4,855,695	5.9%
TOTAL	1,086,493	1,011,656	7.4%
YTD	3,053,656	2,828,508	8.0%
12 Mth Total	13,098,094	12,124,680	8.0%

Passenger ('000)



Notes: Above data is preliminary and subject to subsequent adjustments as new information is obtained.

DOM - Domestic travel within Canada

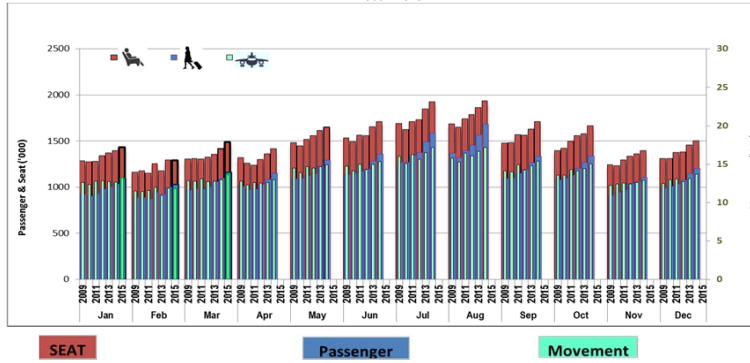
TBR - Transborder to U.S. only

INT'L - International countries excluding the USA

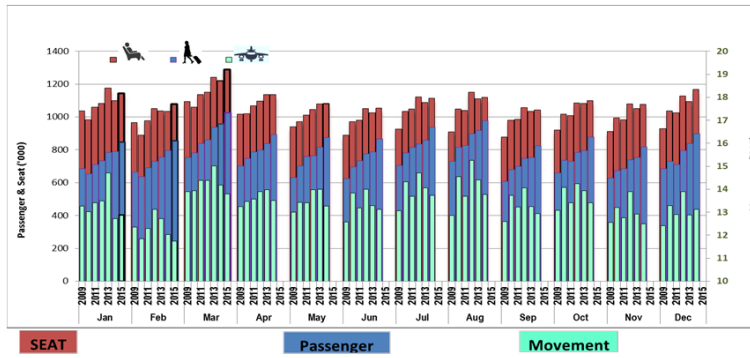
12 Month Period Apr-14 to Mar-15

T2 Closed in Jan 2007 - Traffic transferred to T1.

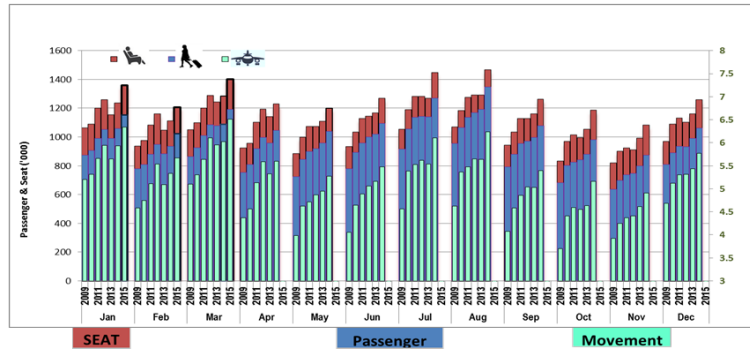
**TORONTO PEARSON
Domestic Traffic
2009 - 2015**



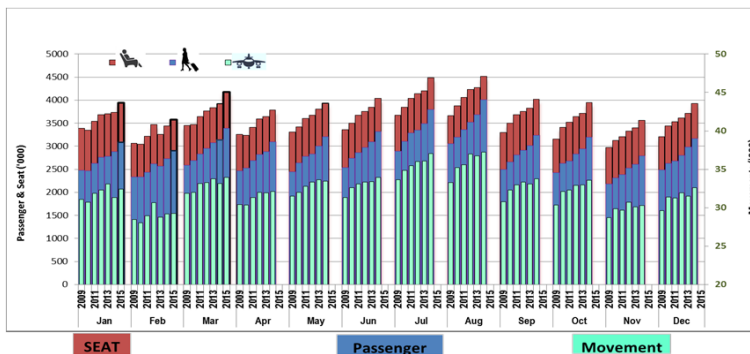
**TORONTO PEARSON
Transborder Traffic
2009 - 2015**



**TORONTO PEARSON
International Traffic
2009 - 2015**



**TORONTO PEARSON
TOTAL TERMINAL TRAFFIC
2009 - 2015**



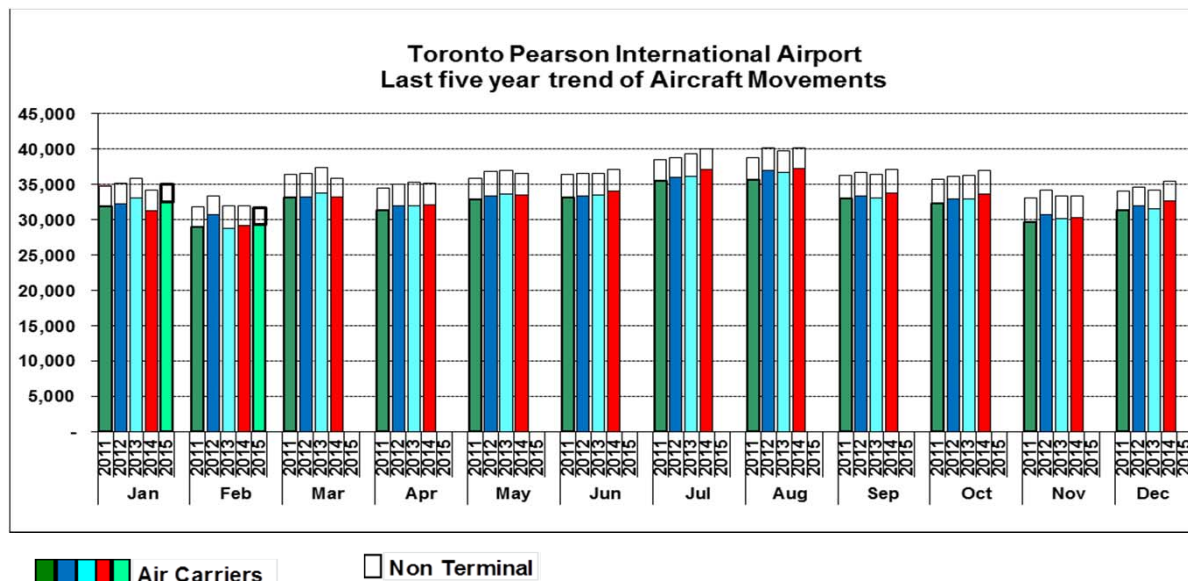
TORONTO PEARSON INTERNATIONAL AIRPORT AIRCRAFT MOVEMENTS				
March-15				
As of: 23-Apr-15	Actual		15/14 % Chg	Actual 2013
	2015	2014		
AIR CARRIER				
> 19T Current	29,621	29,375	0.8%	30,234
YTD	83,579	82,980	0.7%	85,524
12 Month*	349,472	345,661	1.1%	350,068
<=19T Current	4,302	3,761	14.4%	3,532
YTD	11,999	10,667	12.5%	10,096
12 Month*	50,118	47,414	5.7%	46,117
Total Air Carrier				
Current	33,923	33,136	2.4%	33,766
YTD	95,578	93,647	2.1%	95,620
12 Month*	399,590	393,075	1.7%	396,185
Non Terminal				
YTD	2,721	2,675	1.7%	3,551
12 Month*	7,662	8,145	-5.9%	9,321
12 Month*	34,683	35,950	-3.5%	37,210
Grand Total				
TOTAL ALL OPERATIONS				
Current	36,644	35,811	2.3%	37,317
YTD	103,240	101,792	1.4%	104,941
12 Month*	434,273	429,025	1.2%	433,395

Notes: Above data is preliminary and subject to subsequent adjustments as new information is obtained.

1) Data is based on Planning's analysis of NAVCANADA data

2) Data represents Arrivals and Departures.

* 12 Month Period Apr-14 to Mar-15





Airport Activity Statistics Report

Events

- 25 Gates on Pier Hammerhead F of T1 opened Jan 31, 2007
- T2 ceased operation January 30, 2007 at 9:30 pm.(East Hold continues to operate from T1)
- The New T1 1 opened 10 new gates November 1, 2005
- The New T1 1 opened on April 6, 2004 and T1Old ceased operating on the same day.
- Passenger comparisons shown in the Passengers by Terminal reflect T1Old vs. T1 (New) within the T1 table.
- Passengers using the IFT (Infield Terminal) previously processed at T1Old are now processed at T1 and are included in the same comparison table

Moves

- March 2012 - Continental Airlines-United Airlines merger as UNITED
- November 2010 – Continental moved to T1
- January 2010 – NWA merged with Delta as DELTA
- May 16, 2008 – Air India moved to T1
- May 2, 2008 – Icelandair begins operations at T1
- March 29, 2008 – US Air moved to T1
- June 22, 2005 - Westjet moved back to T3
- April 18, 2004 - Westjet moves from T3 to T2
- April 6, 2004 - Air Canada/Jazz Domestic and International operations transfer from T1 (Old) and T2 to T1 (New) along with other Star Alliance and other T1 (Old) carriers.
- June 2, 2003 - Tango moved from T3 to T2 and is a fare option for Air Canada's Domestic and some Transborder activities
- April - June 2000 - Canadian Airlines and its regional affiliates transferred Domestic and Transborder operations to T2 and International services to T1 as it merged with Air Canada. Carriers which had been operating in T1 transferred to T3 including Delta, USAir, Continental, and several international carriers. T2 International Operations moved to T1 (ACA, DLH, MXA, etc.)

Traffic Impacts

- **July 2013**, - Air Canada launches leisure airline as “Rouge”
- **June 2013**, - WestJet launched a new regional airline as “Encore”
- **June 2012**, - WestJet starts non-stop service seven times daily on weekdays between Toronto and New York City's LaGuardia Airport.
- **June 2012**, - Thomas Cook sold its franchise network of 100 agencies to Transat Distribution Co.
- **Sept. 2011**, - American Express pulled out of Canada’s retail agency business.
- **June 13 – 16, 2011**, - Air Canada labor strike
- **June 25 – 27, 2010**, - G8/20 Leaders Summit.
- **January 31, 2010**, - NWA ceased operation to merged with Delta Airlines
- **December 25, 2009**, – Failed terrorist attempt on Delta flight from Amsterdam to Detroit leading to additional security restrictions on transborder air travel
- **April, 2009**, - H1N1 (Swine Flu) virus in Mexico. Resulted travel restriction around the world. Travel advisory to Canadians for Mexico issued
- **August 9, 2006**, - British and US airlines threatened – all carry-on screened
- Major thunderstorms hit GTA, **August, 2005**
- **August 2, 2005** – Air France A340 crashes. No fatalities
- **March 11, 2005** - Jetsgo declared protection from bankruptcy