



# Greater Toronto Airports Authority Memorandum

**General Report**

**To :**

**From :** Faraz Salim

**Date :** October 23, 2015

**RE:** AVIATION ACTIVITY REPORT – **August, 2015**

---

The August 2015 Aviation Activity Report is now available for your information and reference. We have combined the results from June and July as well and these are reflected in the YTD totals shown in the following summary and the attached report.

We would like to obtain your feedback on this report regarding frequency, content and relevance. Please send your comments to the undersigned.

Overall passenger traffic at Toronto Pearson in August was 4.3 million, representing an increase of 6.2% compared to August 2014. For YTD 2015, passenger numbers were 28.0 million, an increase of 6.9% over the same period in 2014.

All three sectors, DOM/TB/INT, showed continuing traffic growth of 4.3%/5.7%/9.0% respectively in August. All three sectors have shown YTD growth of 4.7%/6.6%/9.6% respectively.

A total of 41,556 aircraft arrivals and departures operated at Toronto Pearson in August, representing a -3.4% increase from August 2014 (and YTD 2015 growth of +2.1%).

For **arrivals (>19 tonnes, ATB)**, seat growth was 7.3% for August / 5.9% YTD and MTOW 7.8%/6.6% respectively.

The following table shows the August and YTD 2015 vs. 2014 growth for key activities (**All Terminals, all weights**):

Activity	Passenger	Arr. Seats	Arr. MTOW	Movements	Cargo
August	6.2%	7.3%	7.4%	+3.4%	-8.0%
YTD 2015	6.9%	6.0%	6.2%	+2.1%	-2.0%

**Faraz Salim**

Manager – Decision Support

Finance and Treasury

Phone: 416-776-3858 Cell: 647-382-1769

fax 416-776-4168

[faraz.salim@gtaa.com](mailto:faraz.salim@gtaa.com)



# **TORONTO PEARSON AVIATION ACTIVITY REPORT**

**Aug, 2015**

## **GENERAL REPORT**

Business Optimization

**TORONTO PEARSON INTERNATIONAL AIRPORT  
AIRPORT ACTIVITY REPORT  
REVENUE AND NON REVENUE PASSENGERS**

**August-15**

As of: 10-Oct-15

Actual  
15/14

(B)

(A) / (B)  
Annual  
AAGR

SECTOR	2015	2014	% AAGR	SECTOR	2015	2014	% AAGR	BUDGET 2015	(A) / (B) Annual AAGR
<b>TERMINAL ONE</b>				<b>TOTAL AIRPORT</b>					
DOM	<b>1,201,866</b>	1,159,027	3.7%	DOM	<b>1,755,167</b>	1,682,244	4.33%	1,766,680	-0.65%
YTD	7,482,789	7,211,162	3.8%	YTD	10,688,153	10,208,403	4.70%	10,694,097	-0.06%
12 Mth Total	11,055,985	10,583,779	4.5%	12 Mth Total	15,671,876	14,949,815	4.83%	15,310,971	2.36%
TBR	<b>695,843</b>	639,981	8.7%	TBR	<b>1,034,323</b>	978,146	5.74%	1,046,071	-1.12%
YTD	5,161,983	4,878,610	5.8%	YTD	7,558,515	7,090,377	6.60%	7,563,879	-0.07%
12 Mth Total	7,406,543	7,057,359	4.9%	12 Mth Total	10,974,208	10,231,271	7.26%	10,736,754	2.21%
INT'L	<b>876,789</b>	794,526	10.4%	INT'L	<b>1,469,428</b>	1,348,691	8.95%	1,475,304	-0.40%
YTD	5,933,730	5,307,083	11.8%	YTD	9,736,072	8,879,269	9.65%	9,780,183	-0.45%
12 Mth Total	8,418,589	7,538,230	11.7%	12 Mth Total	13,731,023	12,545,053	9.45%	13,671,700	0.43%
TOTAL	<b>2,774,498</b>	2,593,534	7.0%	TOTAL	<b>4,258,918</b>	4,009,081	6.23%	4,288,055	-0.68%
YTD	18,578,502	17,396,855	6.8%	YTD	27,982,740	26,178,049	6.89%	28,038,159	-0.20%
12 Mth Total	26,881,117	25,179,368	6.8%	12 Mth Total	40,377,107	37,726,139	7.03%	39,719,425	1.66%
<b>TERMINAL THREE</b>				<b>Passenger ('000)</b>					
DOM	<b>553,301</b>	523,217	5.7%	<p>The bar chart displays passenger volume in thousands for four sectors: Cur, YTD, DOM, and TTL. For each sector, three bars are shown: 2014 Actual (purple), 2015 Actual (yellow), and 2015 BUDGET (cyan). The Y-axis ranges from 0 to 30,000. The 2015 Actual data is significantly higher than the 2015 BUDGET for the YTD and TTL categories.</p>					
YTD	3,205,364	2,997,241	6.9%						
12 Mth Total	4,615,891	4,366,036	5.7%						
TBR	<b>338,480</b>	338,165	0.1%						
YTD	2,396,532	2,211,767	8.4%						
12 Mth Total	3,567,665	3,173,912	12.4%						
INT'L	<b>592,639</b>	554,165	6.9%						
YTD	3,802,342	3,572,186	6.4%						
12 Mth Total	5,312,434	5,006,823	6.1%						
TOTAL	<b>1,484,420</b>	1,415,547	4.9%						
YTD	9,404,238	8,781,194	7.1%						
12 Mth Total	13,495,990	12,546,771	7.6%						

**Notes:** Above data is preliminary and subject to subsequent adjustments as new information is obtained.

DOM - Domestic travel within Canada

TBR - Transborder to U.S. only

INT'L - International countries excluding the USA

12 Month Period Sep-14 to Aug-15

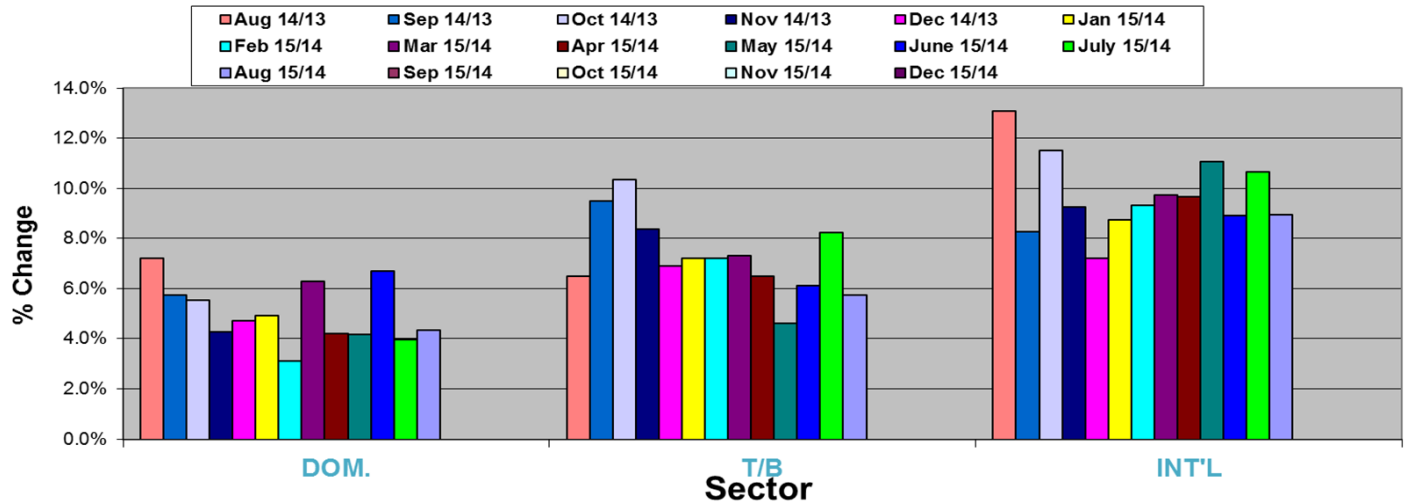
T2 Closed in Jan 2007 - Traffic transferred to T1.

TORONTO PEARSON INTERNATIONAL AIRPORT								
2014								
TOTAL PASSENGERS								
MONTH	DOM.	14/13	T/B	14/13	INT'L	14/13	Total	14/13
JAN	T1	741,387		565,285		641,950	1,948,622	
	T3	295,858		223,678		417,489	937,025	
Ttl JAN		1,037,245	3.1%	788,963	1%	1,059,439	2,885,647	4%
FEB	T1	721,764		571,347		558,115	1,851,226	
	T3	276,840		225,444		377,543	879,827	
Ttl FEB		998,604	8.1%	796,791	5.3%	935,658	2,731,053	6.5%
Mar	T1	797,748		687,511		643,031	2,128,290	
	T3	297,832		269,872		443,952	1,011,656	
Ttl Mar		1,095,580	3.5%	957,383	2.2%	1,086,983	3,139,946	2.2%
Apr	T1	827,120		627,202		619,984	2,074,306	
	T3	325,015		265,415		425,579	1,016,009	
Ttl Apr		1,152,135	6.3%	892,617	6.3%	1,045,563	3,090,315	7.3%
May	T1	903,405		590,074		635,414	2,128,893	
	T3	390,619		284,058		402,904	1,077,581	
Ttl May		1,294,024	5.5%	874,132	7.2%	1,038,318	3,206,474	6.9%
June	T1	958,378		572,524		657,091	2,187,993	
	T3	399,825		292,875		437,629	1,130,329	
Ttl June		1,358,203	5.8%	865,399	9.8%	1,094,720	3,318,322	7.4%
July	T1	1,102,333		624,686		756,972	2,483,991	
	T3	488,035		312,260		512,925	1,313,220	
Ttl July		1,590,368	6.7%	936,946	9.3%	1,269,897	3,797,211	8.8%
Aug	T1	1,159,027		639,981		794,526	2,593,534	
	T3	523,217		338,165		554,165	1,415,547	
Ttl Aug		1,682,244	7.2%	978,146	6.5%	1,348,691	4,009,081	8.9%
Sep	T1	956,778		541,967		671,203	2,169,948	
	T3	379,097		281,495		406,873	1,067,465	
Ttl Sep		1,335,875	5.7%	823,462	9.5%	1,078,076	3,237,413	7.5%
Oct	T1	950,475		574,194		611,694	2,136,363	
	T3	390,520		303,952		370,523	1,064,995	
Ttl Oct		1,340,995	5.5%	878,146	10.4%	982,217	3,201,358	8.6%
Nov	T1	793,894		532,578		535,814	1,862,286	
	T3	309,966		284,355		336,477	930,798	
Ttl Nov		1,103,860	4.3%	816,933	8.4%	872,291	2,793,084	7.0%
Dec	T1	872,049		595,821		666,148	2,134,018	
	T3	330,944		301,331		396,219	1,028,494	
Ttl Dec		1,202,993	4.7%	897,152	6.9%	1,062,367	3,162,512	6.2%
Grand Ttl	T1	10,784,358		7,123,170		7,791,942	25,699,470	
	T3	4,407,768		3,382,900		5,082,278	12,872,946	
		15,192,126	5.6%	10,506,070	6.8%	12,874,220	38,572,416	6.8%

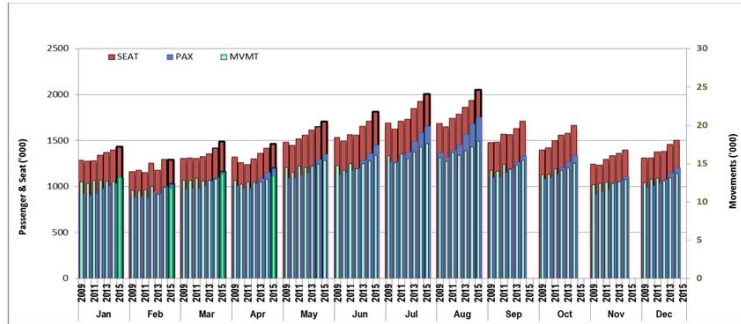
TORONTO PEARSON INTERNATIONAL AIRPORT								
2015								
TOTAL PASSENGERS								
DOM.	15/14	T/B	As of: 10-Oct-15			15/14	Total	15/14
			15/14	INT'L	15/14			
789,753		568,908		711,199		2,069,860		
298,645		276,765		441,036		1,016,446		
1,088,398	4.9%	845,673	7.2%	1,152,235	8.8%	3,086,306	7.0%	
740,712		586,824		628,687		1,956,223		
288,908		267,327		394,482		950,717		
1,029,620	3.1%	854,151	7.2%	1,023,169	9.4%	2,906,940	6.4%	
842,003		725,559		730,316		2,297,878		
322,194		301,615		462,684		1,086,493		
1,164,197	6.3%	1,027,174	7.3%	1,193,000	9.8%	3,384,371	7.8%	
861,394		654,627		690,388		2,206,409		
339,240		295,755		456,418		1,091,413		
1,200,634	4.2%	950,382	6.5%	1,146,806	9.7%	3,297,822	6.7%	
926,320		605,460		712,868		2,244,648		
421,481		308,997		440,524		1,171,002		
1,347,801	4.2%	914,457	4.6%	1,153,392	11.1%	3,415,650	6.5%	
995,794		628,804		732,831		2,357,429		
453,021		289,458		459,738		1,202,217		
1,448,815	6.7%	918,262	6.1%	1,192,569	8.9%	3,559,646	7.3%	
1,124,947		695,958		850,652		2,671,557		
528,574		318,135		554,821		1,401,530		
1,653,521	4.0%	1,014,093	8.2%	1,405,473	10.7%	4,073,087	7.3%	
1,201,866		695,843		876,789		2,774,498		
553,301		338,480		592,639		1,484,420		
1,755,167	4.3%	1,034,323	5.7%	1,469,428	9.0%	4,258,918	6.2%	
0		0		0		0		
0		0		0		0		
0	0.0%	0	0.0%	0	0.0%	0	0.0%	
0		0		0		0		
0		0		0		0		
0	0.0%	0	0.0%	0	0.0%	0	0.0%	
0		0		0		0		
0		0		0		0		
0	0.0%	0	0.0%	0	0.0%	0	0.0%	
7,482,789		5,161,983		5,933,730		18,578,502		
3,205,364		2,396,532		3,802,342		9,404,238		
10,688,153	4.7%	7,558,515	6.6%	9,736,072	9.6%	27,982,740	6.9%	

Notes: Above data is preliminary and subject to subsequent adjustments as new information is obtained.

### Annual Percentage Changes by month and sector All Terminal



**TORONTO PEARSON  
Domestic Traffic  
2009 - 2015**

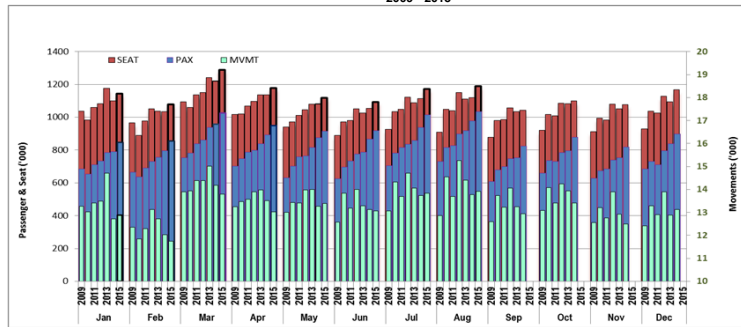


**SEAT**

**Passenger**

**Movement**

**TORONTO PEARSON  
Transborder Traffic  
2009 - 2015**

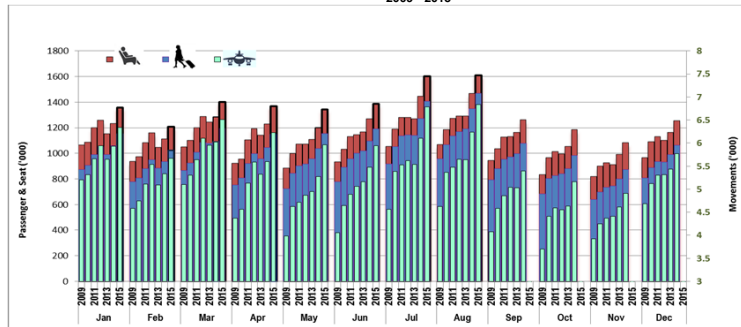


**SEAT**

**Passenger**

**Movement**

**TORONTO PEARSON  
International Traffic  
2009 - 2015**

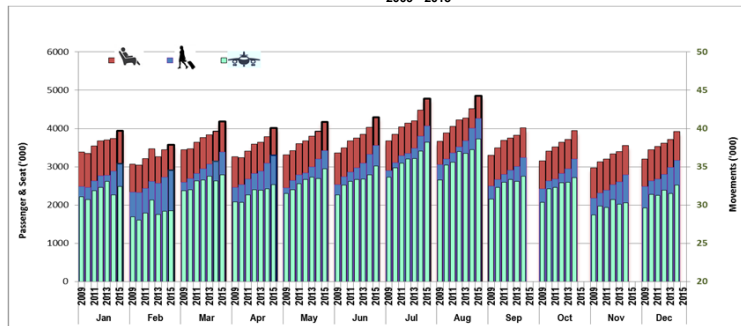


**SEAT**

**Passenger**

**Movement**

**TORONTO PEARSON  
TOTAL TERMINAL TRAFFIC  
2009 - 2015**



**SEAT**

**Passenger**

**Movement**

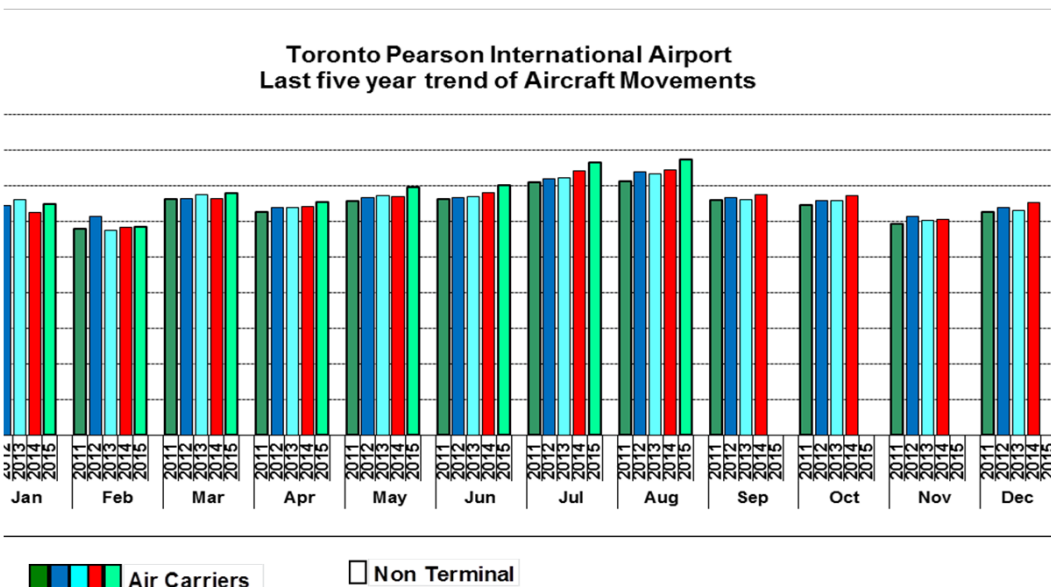
TORONTO PEARSON INTERNATIONAL AIRPORT AIRCRAFT MOVEMENTS August-15				
As of: 10-Oct-15	Actual		15/14	Actual
	2015	2014	% Chg	2013
<b>AIR CARRIER</b>				
> 19T Current	<b>33,885</b>	<b>32,794</b>	<b>3.3%</b>	<b>32,073</b>
YTD	240,242	235,344	2.1%	236,224
12 Month*	353,771	347,325	1.9%	350,783
<=19T Current	<b>4,743</b>	<b>4,428</b>	<b>7.1%</b>	<b>4,656</b>
YTD	34,648	32,072	8.0%	31,187
12 Month*	51,362	47,728	7.6%	45,498
<b>Total Air Carrier</b>				
Current	<b>38,628</b>	<b>37,222</b>	<b>3.8%</b>	<b>36,729</b>
YTD	274,890	267,416	2.8%	267,411
12 Month*	405,133	395,053	2.6%	396,281
<b>Non Terminal</b>				
Current	<b>2,928</b>	<b>2,955</b>	<b>-0.9%</b>	<b>2,965</b>
YTD	22,943	24,412	-6.0%	24,447
12 Month*	35,516	37,125	-4.3%	36,856
<b>Grand Total</b>				
<b>TOTAL ALL OPERATIONS</b>				
Current	<b>41,556</b>	<b>40,177</b>	<b>3.4%</b>	<b>39,694</b>
YTD	297,833	291,828	2.1%	291,858
12 Month*	440,649	432,178	2.0%	433,137

**Notes:** Above data is preliminary and subject to subsequent adjustments as new information is obtained.

1) Data is based on Planning's analysis of NAVCANADA data

2) Data represents Arrivals and Departures.

\* 12 Month Period Sep-14 to Aug-15





## Airport Activity Statistics Report

### Events

- 25 Gates on Pier Hammerhead F of T1 opened Jan 31, 2007
- T2 ceased operation January 30, 2007 at 9:30 pm.(East Hold continues to operate from T1)
- The New T1 1 opened 10 new gates November 1, 2005
- The New T1 1 opened on April 6, 2004 and T1Old ceased operating on the same day.
- Passenger comparisons shown in the Passengers by Terminal reflect T1Old vs. T1 (New) within the T1 table.
- Passengers using the IFT (Infield Terminal) previously processed at T1Old are now processed at T1 and are included in the same comparison table

### Moves

- March 2012 - Continental Airlines-United Airlines merger as UNITED
- November 2010 – Continental moved to T1
- January 2010 – NWA merged with Delta as DELTA
- May 16, 2008 – Air India moved to T1
- May 2, 2008 – Icelandair begins operations at T1
- March 29, 2008 – US Air moved to T1
- June 22, 2005 - Westjet moved back to T3
- April 18, 2004 - Westjet moves from T3 to T2
- April 6, 2004 - Air Canada/Jazz Domestic and International operations transfer from T1 (Old) and T2 to T1 (New) along with other Star Alliance and other T1 (Old) carriers.
- June 2, 2003 - Tango moved from T3 to T2 and is a fare option for Air Canada's Domestic and some Transborder activities
- April - June 2000 - Canadian Airlines and its regional affiliates transferred Domestic and Transborder operations to T2 and International services to T1 as it merged with Air Canada. Carriers which had been operating in T1 transferred to T3 including Delta, USAir, Continental, and several international carriers. T2 International Operations moved to T1 (ACA, DLH, MXA, etc.)

### Traffic Impacts

- **July 2013**, - Air Canada launches leisure airline as “Rouge”
- **June 2013**, - WestJet launched a new regional airline as “Encore”
- **June 2012**, - WestJet starts non-stop service seven times daily on weekdays between Toronto and New York City's LaGuardia Airport.
- **June 2012**, - Thomas Cook sold its franchise network of 100 agencies to Transat Distribution Co.
- **Sept. 2011**, - American Express pulled out of Canada's retail agency business.
- **June 13 – 16, 2011**, - Air Canada labor strike
- **June 25 – 27, 2010**, - G8/20 Leaders Summit.
- **January 31, 2010**, - NWA ceased operation to merged with Delta Airlines
- **December 25, 2009**, – Failed terrorist attempt on Delta flight from Amsterdam to Detroit leading to additional security restrictions on transborder air travel
- **April, 2009**, - H1N1 (Swine Flu) virus in Mexico. Resulted travel restriction around the world. Travel advisory to Canadians for Mexico issued
- **August 9, 2006**, - British and US airlines threatened – all carry-on screened
- Major thunderstorms hit GTA, **August, 2005**
- **August 2, 2005** – Air France A340 crashes. No fatalities
- **March 11, 2005** - Jetsgo declared protection from bankruptcy