



Greater Toronto Airports Authority Memorandum

External Report

To :

From : Faraz Salim

Date : December 23, 2015

RE: AVIATION ACTIVITY REPORT – **October, 2015**

The October 2015 Aviation Activity Report, is now available for your information and reference. We have combined the results from September as well and these are reflected in the YTD totals shown in the following summary and the attached report.

We would like to obtain your feedback on this report regarding frequency, content and relevance. Please send your comments to the undersigned.

Overall passenger traffic at Toronto Pearson in October was 3.3 million, representing an increase of 4.3% compared to October 2014. For YTD 2015, passenger numbers were 34.8 million, an increase of 6.6% over the same period in 2014.

All three sectors, DOM/TB/INT, showed continuing traffic growth of 1.5%/4.6%/7.8% respectively in October. All three sectors have shown YTD growth of 4.5%/6.3%/9.5% respectively.

A total of 37,314 aircraft arrivals and departures operated at Toronto Pearson in October, representing a -1.2% increase from October 2014 (and YTD 2015 growth of +2.0%).

For **arrivals (>19 tonnes, ATB)**, seat growth was 3.4% for October / 5.7% YTD and MTOW 4.3%/6.3% respectively.

The following table shows the October and YTD 2015 vs. 2014 growth for key activities **(All Terminals, all weights)**:

| Activity | Passenger | Arr. Seats | Arr. MTOW | Movements |
|----------|-----------|------------|-----------|-----------|
| October | 4.3% | 3.2% | 3.9% | +1.2% |
| YTD 2015 | 6.6% | 5.7% | 5.9% | +2.0% |

Original Signed by

Faraz Salim

Manager – Decision Support
Corporate Accounting
6-3858 cell (647) - 382-1769
fax 6-4168



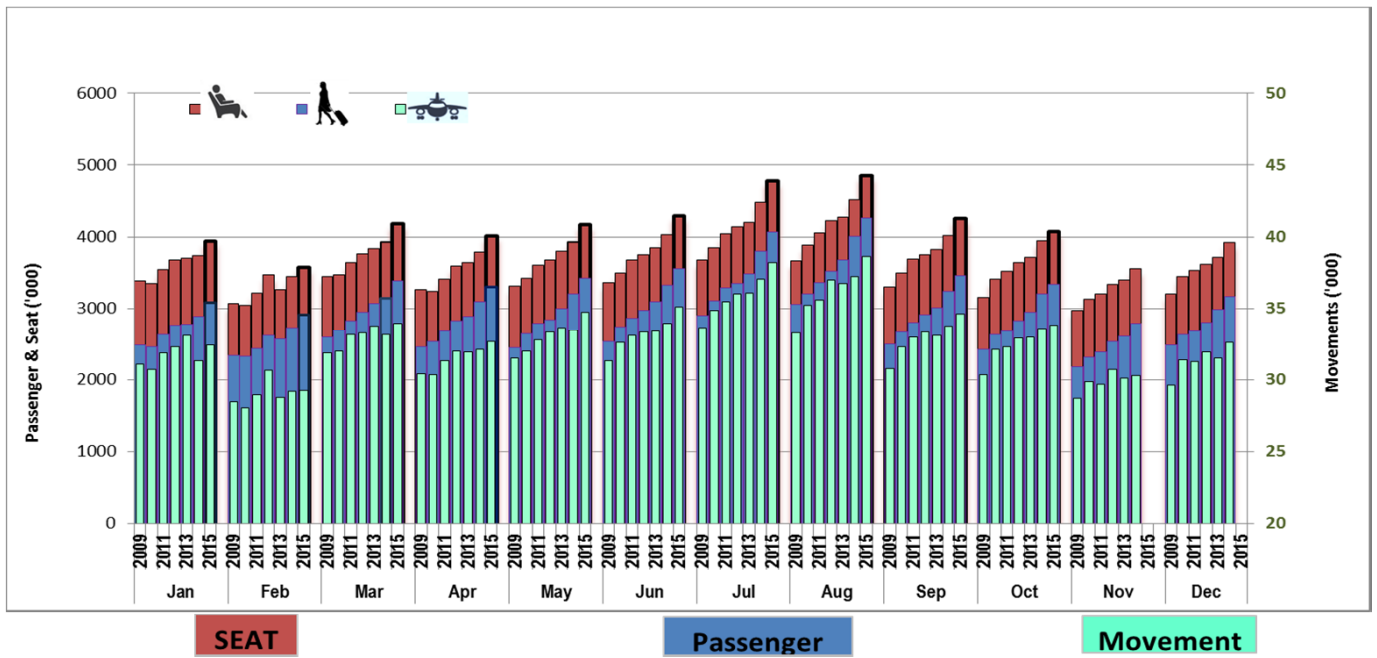
TORONTO PEARSON AVIATION ACTIVITY REPORT

October, 2015

GENERAL RELEASE

Business Optimization

TORONTO PEARSON TOTAL TERMINAL TRAFFIC 2009-2015



TORONTO PEARSON INTERNATIONAL AIRPORT (Actual and Previous comparison)

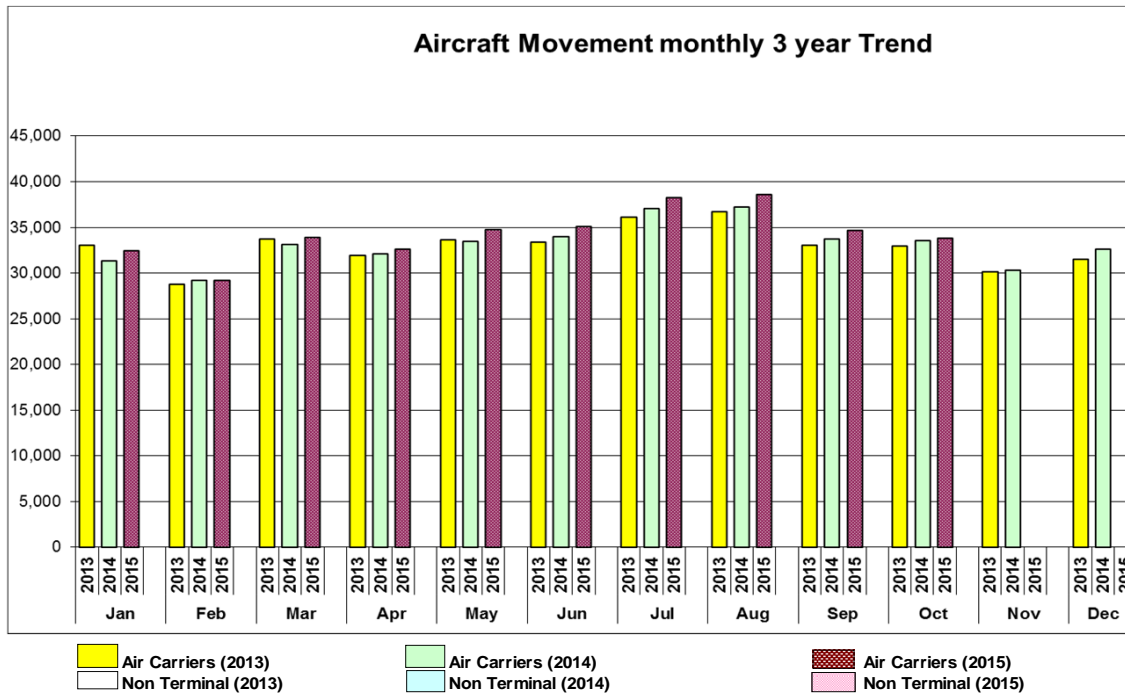
of 08-Dec-14

| Month | AIR CARRIER | | | | | | | | Non Terminal | Chg | GRAND TOTAL | Chg |
|-------------|----------------|-------------|----------------|--------------|---------------|-------------|----------------|-------------|---------------|--------------|----------------|-------------|
| | DOM | Chg | TBR | Chg | INT | Chg | TOTAL | Chg | | | | |
| Jan-15 | 13,211 | 4.5% | 12,877 | 1.2% | 6,341 | 6.9% | 32,429 | 3.6% | 2,554 | -14.9% | 34,983 | 2.0% |
| Feb-15 | 11,817 | -0.2% | 11,745 | -2.4% | 5,664 | 6.2% | 29,226 | 0.0% | 2,387 | -13.9% | 31,613 | -1.2% |
| Mar-15 | 13,612 | 5.2% | 13,801 | -2.6% | 6,510 | 8.1% | 33,923 | 2.4% | 2,721 | -3.4% | 36,644 | 1.9% |
| Apr-15 | 13,391 | 3.1% | 13,017 | -3.7% | 6,228 | 11.3% | 32,636 | 1.7% | 3,030 | -6.0% | 35,666 | 1.0% |
| May-15 | 15,394 | 3.1% | 13,391 | 0.9% | 5,959 | 13.1% | 34,744 | 3.8% | 3,031 | -7.2% | 37,775 | 2.8% |
| Jun-15 | 16,075 | 4.8% | 13,067 | -0.5% | 5,940 | 8.4% | 35,082 | 3.3% | 3,248 | -2.2% | 38,330 | 2.8% |
| Jul-15 | 17,601 | 2.4% | 13,841 | 0.8% | 6,781 | 11.1% | 38,223 | 3.2% | 3,044 | -0.5% | 41,267 | 3.0% |
| Aug-15 | 17,875 | 3.9% | 13,918 | 1.0% | 6,833 | 9.5% | 38,626 | 3.8% | 2,928 | -0.9% | 41,554 | 3.4% |
| Sep-15 | 15,855 | 2.7% | 12,972 | 0.3% | 5,805 | 7.6% | 34,632 | 2.6% | 3,377 | -1.4% | 38,009 | 2.2% |
| Oct-15 | 15,124 | 0.7% | 13,288 | -0.8% | 5,421 | 5.1% | 33,833 | 0.7% | 3,481 | 5.4% | 37,314 | 1.2% |
| Nov-15 | - | - | - | - | - | - | - | - | - | - | - | - |
| Dec-15 | - | - | - | - | - | - | - | - | - | - | - | - |
| 2015 | 149,955 | 3.0% | 131,917 | -0.6% | 61,482 | 8.8% | 343,354 | 2.6% | 29,801 | -4.3% | 373,155 | 2.0% |

Chg = Change from previous year for the month

Notes: Above data is preliminary and subject to subsequent adjustments as new information is obtained.

Sectoral Breakdown is based on ACA and Terminal data. Non terminals movements includes billable and non billable portion.





Airport Activity Statistics Report

Events

- 25 Gates on Pier Hammerhead F of T1 opened Jan 31, 2007
- T2 ceased operation January 30, 2007 at 9:30 pm.(East Hold continues to operate from T1)
- The New T1 1 opened 10 new gates November 1, 2005
- The New T1 1 opened on April 6, 2004 and T1Old ceased operating on the same day.
- Passenger comparisons shown in the Passengers by Terminal reflect T1Old vs. T1 (New) within the T1 table.
- Passengers using the IFT (Infield Terminal) previously processed at T1Old are now processed at T1 and are included in the same comparison table

Moves

- March 2012 - Continental Airlines-United Airlines merger as UNITED
- November 2010 – Continental moved to T1
- January 2010 – NWA merged with Delta as DELTA
- May 16, 2008 – Air India moved to T1
- May 2, 2008 – Icelandair begins operations at T1
- March 29, 2008 – US Air moved to T1
- June 22, 2005 - Westjet moved back to T3
- April 18, 2004 - Westjet moves from T3 to T2
- April 6, 2004 - Air Canada/Jazz Domestic and International operations transfer from T1 (Old) and T2 to T1 (New) along with other Star Alliance and other T1 (Old) carriers.
- June 2, 2003 - Tango moved from T3 to T2 and is a fare option for Air Canada's Domestic and some Transborder activities
- April - June 2000 - Canadian Airlines and its regional affiliates transferred Domestic and Transborder operations to T2 and International services to T1 as it merged with Air Canada. Carriers which had been operating in T1 transferred to T3 including Delta, USAir, Continental, and several international carriers. T2 International Operations moved to T1 (ACA, DLH, MXA, etc.)

Traffic Impacts

- **July 2013**, - Air Canada launches leisure airline as “Rouge”
- **June 2013**, - WestJet launched a new regional airline as “Encore”
- **June 2012**, - WestJet starts non-stop service seven times daily on weekdays between Toronto and New York City's LaGuardia Airport.
- **June 2012**, - Thomas Cook sold its franchise network of 100 agencies to Transat Distribution Co.
- **Sept. 2011**, - American Express pulled out of Canada's retail agency business.
- **June 13 – 16, 2011**, - Air Canada labor strike
- **June 25 – 27, 2010**, - G8/20 Leaders Summit.
- **January 31, 2010**, - NWA ceased operation to merged with Delta Airlines
- **December 25, 2009**, – Failed terrorist attempt on Delta flight from Amsterdam to Detroit leading to additional security restrictions on transborder air travel
- **April, 2009**, - H1N1 (Swine Flu) virus in Mexico. Resulted travel restriction around the world. Travel advisory to Canadians for Mexico issued
- **August 9, 2006**, - British and US airlines threatened – all carry-on screened
- Major thunderstorms hit GTA, **August, 2005**
- **August 2, 2005** – Air France A340 crashes. No fatalities
- **March 11, 2005** - Jetsgo declared protection from bankruptcy