



# Greater Toronto Airports Authority

## Memorandum

**General Release**

**To :**  
**From :** Brad Robertson  
**Date :** June 13, 2011  
**RE:** AVIATION ACTIVITY REPORT – MARCH 2011

---

The March 2011 Aviation Activity Report is now available for your information and reference.

Total passengers increased by 5.0% in March as compared to March 2010, which essentially returns traffic to the pre-recession March high in 2008. Transborder passengers increased by 7.2% from 2010 and International passengers increased by 8.9%. Conversely, Domestic passengers slightly declined by -0.5%.

Total aircraft movements (passenger terminal and non-terminal) increased by 3.7% from March 2010 to March 2011. Passenger terminal landings increased by 3.4% supported primarily by growth in narrow body (e.g. B737/A320) aircraft in the Transborder sector and wide body aircraft in the International sector.

**Original signed by**

Brad Robertson  
General Manager  
Strategic Analysis & Forecasting  
June 9, 2011



# **TORONTO PEARSON AVIATION ACTIVITY REPORT**

**March-11**

**GENERAL RELEASE**

Strategic Analysis & Forecasting

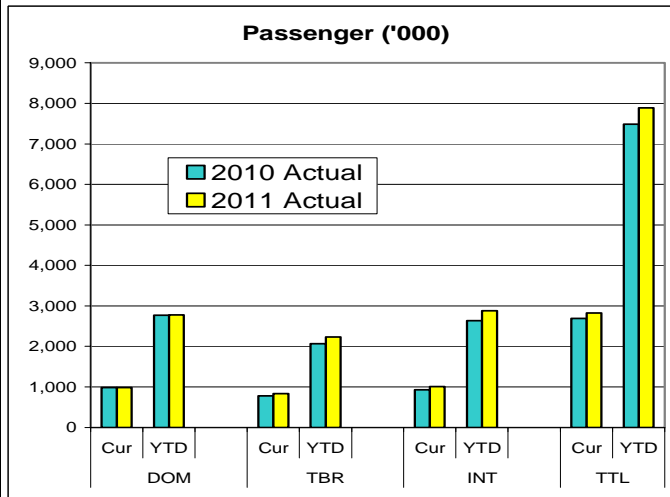
**TORONTO PEARSON INTERNATIONAL AIRPORT  
AIRPORT ACTIVITY REPORT  
REVENUE AND NON REVENUE PASSENGERS**

**March-11**

Actual  
11/10  
As of: 17-May2011

Actual  
10/09

SECTOR	2011	2010	% AAGR	SECTOR	2011	2010	% AAGR
<b>TERMINAL ONE</b>							
DOM	716,097	735,284	-2.6%	DOM	980,311	985,105	-0.49%
YTD	2,035,110	2,067,897	-1.6%	YTD	2,776,643	2,773,296	0.12%
12 Mth Total	9,266,638	9,350,993	-0.9%	12 Mth Total	12,734,144	12,724,165	0.08%
TBR	579,214	497,295	16.5%	TBR	837,969	781,911	7.17%
YTD	1,546,359	1,318,682	17.3%	YTD	2,236,937	2,070,228	8.05%
12 Mth Total	5,772,758	5,123,262	12.7%	12 Mth Total	8,795,560	8,041,531	9.38%
INT'L	550,470	519,830	5.9%	INT'L	1,008,389	925,777	8.92%
YTD	1,553,441	1,450,345	7.1%	YTD	2,878,240	2,641,160	8.98%
12 Mth Total	6,318,479	5,674,917	11.3%	12 Mth Total	10,815,327	9,688,898	11.63%
<b>TOTAL</b>	<b>1,845,781</b>	<b>1,752,409</b>	<b>5.3%</b>	<b>TOTAL</b>	<b>2,826,669</b>	<b>2,692,793</b>	<b>4.97%</b>
YTD	5,134,910	4,836,924	6.2%	YTD	7,891,820	7,484,684	5.44%
12 Mth Total	21,357,875	20,149,172	6.0%	12 Mth Total	32,345,031	30,454,594	6.21%
<b>TERMINAL THREE</b>							
DOM	264,214	249,821	5.8%	DOM	980,311	985,105	-0.49%
YTD	741,533	705,399	5.1%	YTD	2,776,643	2,773,296	0.12%
12 Mth Total	3,467,506	3,373,172	2.8%	12 Mth Total	12,734,144	12,724,165	0.08%
TBR	258,755	284,616	-9.1%	TBR	837,969	781,911	7.17%
YTD	690,578	751,546	-8.1%	YTD	2,236,937	2,070,228	8.05%
12 Mth Total	3,022,802	2,918,269	3.6%	12 Mth Total	8,795,560	8,041,531	9.38%
INT'L	457,919	405,947	12.8%	INT'L	1,008,389	925,777	8.92%
YTD	1,324,799	1,190,815	11.3%	YTD	2,878,240	2,641,160	8.98%
12 Mth Total	4,496,848	4,013,981	12.0%	12 Mth Total	10,815,327	9,688,898	11.63%
<b>TOTAL</b>	<b>980,888</b>	<b>940,384</b>	<b>4.3%</b>	<b>TOTAL</b>	<b>2,826,669</b>	<b>2,692,793</b>	<b>4.97%</b>
YTD	2,756,910	2,647,760	4.1%	YTD	7,891,820	7,484,684	5.44%
12 Mth Total	10,987,156	10,305,422	6.6%	12 Mth Total	32,345,031	30,454,594	6.21%



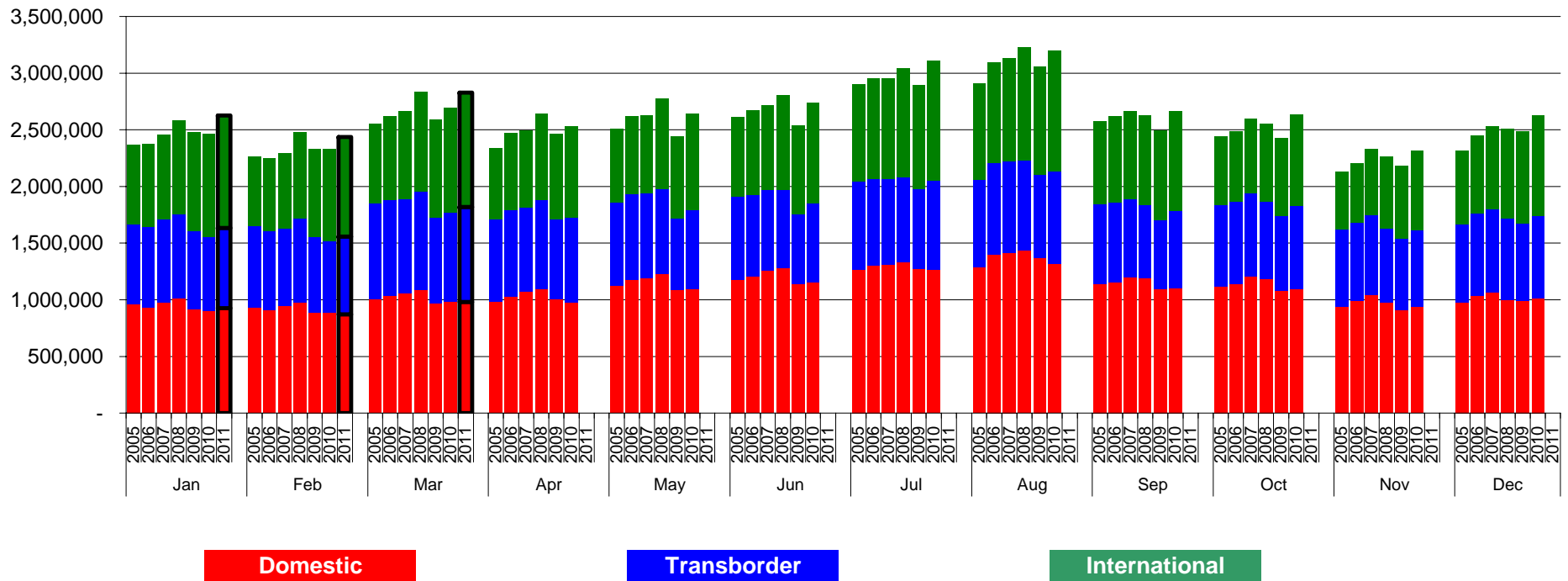
**Notes:** Above data is preliminary and subject to subsequent adjustments as new information is obtained.

DOM - Domestic travel within Canada  
TBR - Transborder to U.S. only  
INT'L - International countries excluding the USA

12 Month Period Apr-10 to Mar-11

T2 Closed in Jan 2007 - Traffic transferred to T1.

## TORONTO PEARSON INTERNATIONAL AIRPORT Total Passengers 2005 - 2011

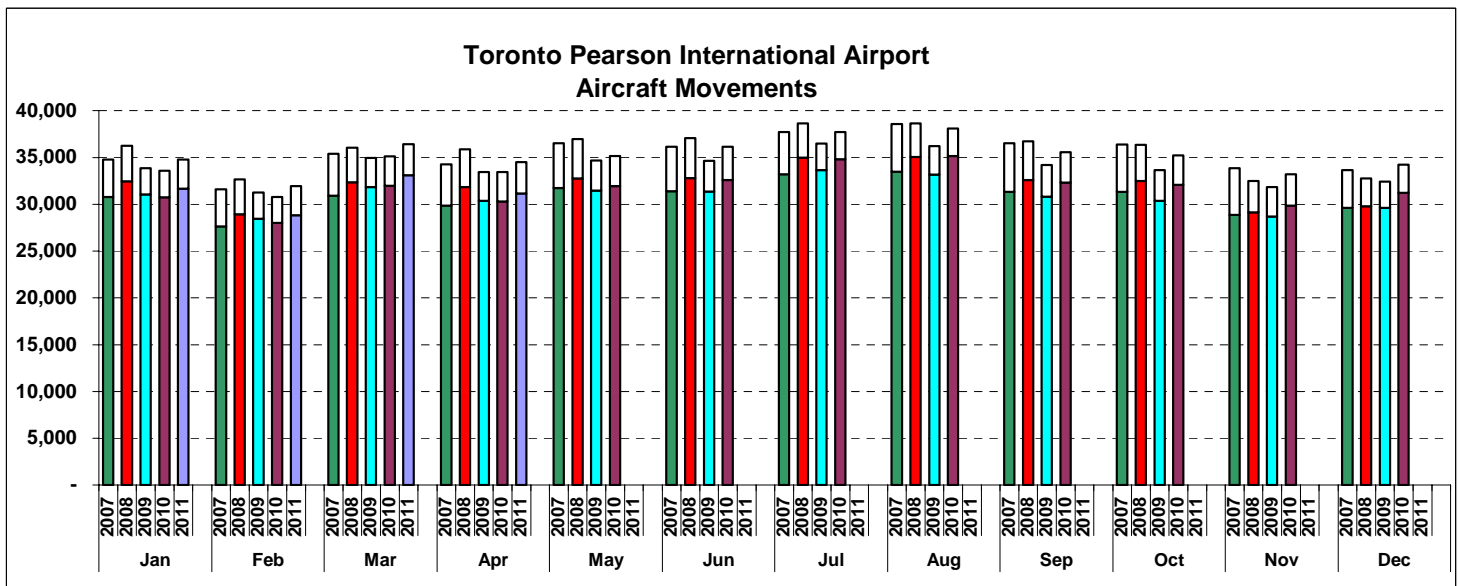


**Notes:** Above data is preliminary and subject to subsequent adjustments as new information is obtained.



<b>TORONTO PEARSON INTERNATIONAL AIRPORT AIRCRAFT MOVEMENTS</b>					
<b>March</b>					
		<b>Actual</b>		<b>11/10</b>	<b>Actual</b>
		<b>2011</b>	<b>2010</b>	<b>% Chg</b>	<b>2009</b>
<b>AIR CARRIER</b>					
> 35T Current		21,392	20,792	2.9%	20,597
Ytd		60,986	59,303	2.8%	59,729
12 Month*		249,403	233,470	6.8%	246,764
<35T Current		11,725	11,182	4.9%	11,233
Ytd		32,666	31,418	4.0%	31,615
12 Month*		<u>134,583</u>	<u>136,840</u>	-1.6%	<u>218,650</u>
<b>Current</b>		<b>33,117</b>	<b>31,974</b>	<b>3.6%</b>	<b>31,830</b>
Ytd		<b>93,652</b>	<b>90,721</b>	<b>3.2%</b>	<b>91,344</b>
12 Month*		<b>383,986</b>	<b>370,310</b>	<b>3.7%</b>	<b>465,414</b>
<b>General Aviation</b>		<b>3,318</b>	<b>3,161</b>	<b>5.0%</b>	<b>3,105</b>
Ytd		<b>9,522</b>	<b>8,759</b>	<b>8.7%</b>	<b>8,744</b>
12 Month*		<b><u>38,006</u></b>	<b><u>36,805</u></b>	<b>3.3%</b>	<b><u>42,917</u></b>
<b><u>TOTAL ALL OPERATIONS</u></b>					
<b>Current</b>		<b>36,435</b>	<b>35,135</b>	<b>3.7%</b>	<b>34,935</b>
Ytd		<b>103,174</b>	<b>99,480</b>	<b>3.7%</b>	<b>100,088</b>
12 Month*		<b><u>421,992</u></b>	<b><u>407,115</u></b>	<b>3.7%</b>	<b><u>508,331</u></b>

- 1) Data is based on Planning's analysis of NAVCANADA data
  - 2) Data represents Arrivals and Departures, both Itinerant and Local
- \*12 Month Period Apr-10 to Mar-11



# Airport Activity Statistics Report

Gates on Pier Hammerhead F of T1 opened Jan 31, 2007

! ceased operation January 30, 2007 at 9:30 pm.(East Hold continues to operate from )

ie New T1 1 opened 10 new gates November 1, 2005

ie New T1 1 opened on April 6, 2004 and T1Old ceased operating on the same day.

ssenger comparisons shown in the Passengers by Terminal reflect T1Old vs. T1 (New) thin the T1 table.

ssengers using the IFT (Infield Terminal) previously processed at T1Old are now ccessed at T1 and are included in the same comparison table

ovember 2010 – Continental moved to T1

ay 16, 2008 – Air India moved to T1

ay 2, 2008 – Icelandair begins operations at T1

arch 29, 2008 – US Air moved to T1

ne 22, 2005 - Westjet moved back to T3

ril 18, 2004 - Westjet moves from T3 to T2

ril 6, 2004 - Air Canada/Jazz Domestic and International operations transfer from T1 ld) and T2 to T1 (New) along with other Star Alliance and other T1 (Old) carriers.

ne 2, 2003 - Tango moved from T3 to T2 and is a fare option for Air Canada's omestic and some Transborder activities

ril - June 2000 - Canadian Airlines and its regional affiliates transferred Domestic and ansborder operations to T2 and International services to T1 as it merged with Air nada. Carriers which had been operating in T1 transferred to T3 including Delta, 3Air, Continental, and several international carriers. T2 International Operations oved to T1 (ACA, DLH, MXA, etc.)

## mpacts

**ne 25 – 27, 2010**, - G8/20 Leaders Summit.

**nuary 31, 2010**, - NWA ceased operation to merged with Delta Airlines

**ecember 25, 2009**, – Failed terrorist attempt on Delta flight from Amsterdam to Detroit ding to additional security restrictions on transborder air travel

**ril, 2009**, - H1N1 (Swine Flu) virus in Mexico. Resulted travel restriction around the rld. Travel advisory to Canadians for Mexico issued

**igust 9, 2006**, - British and US airlines threatened – all carry-on screened ajor thunderstorms hit GTA, **August, 2005**

**igust 2, 2005** – Air France A340 crashes. No fatalities

**arch 11, 2005** - Jetsgo declared protection from bankruptcy

**ril 2004** - WestJet increased operations at Toronto and cut back some service at umilton Airport

ajor blackout in Ontario and eastern seaboard of the USA – **August 14-16, 2003**

orld Health Organization (WHO) imposes travel restriction to the Toronto area due to vere Acute Respiratory Syndromes (SARS) April, 2003 until **July, 2003**

ar in Iraq – started **March 19, 2003 - ended mid April 2003**, still occupied

ajor ice storms in Toronto and Eastern Canada - **April 3 - 4, 2003**

r Canada files for bankruptcy protection – **April 1, 2003**

ar in Iraq – started **March 19, 2003 - ended mid-April 2003**, still occupied

nada 3000 shutdown **November 10, 2001**