



## Memorandum

**General Release**

**To :**  
**From :** Brad Robertson  
**Date :** September 26, 2011  
**RE:** AVIATION ACTIVITY REPORT – JULY, 2011

---

The July 2011 Aviation Activity Report is now available on i-share for your information and reference. Please follow the link below to view.

The overall passenger traffic in July was 3.29 million, representing an increase of 6.1% compared to July 2010. This growth made July the busiest month on record for Toronto Pearson Airport in terms of the number of passengers, surpassing the previous high set in August 2008. Passengers in the domestic sector increased 5.9% year-over-year, which is the strongest growth experienced in that sector since before the 2008/2009 economic downturn. In the transborder sector, passenger volume was up 4.1%, while the international sector continued to be the strongest sector with passenger growth of 7.8%. Total year-to-date passenger growth is up 5.5% over the same period in 2010.

A total of 38,542 aircraft arrivals and departures operated at Toronto Pearson in July, representing an increase of 2.1% over July 2010, and just below the July 2008 pre-recession high. Year-to-date aircraft arrivals and departures are up 2.9% as compared to 2010.

**Original signed by**

**Brad Robertson**  
General Manager, Strategic Analysis & Forecasting  
Strategic Planning and Airport Development  
6-5425 fax 6-4168  
[Brad.Robertson@GTAA.com](mailto:Brad.Robertson@GTAA.com)

In support of our ISO 14001 program, please avoid printing e-mails whenever possible.



## **TORONTO PEARSON AVIATION ACTIVITY REPORT**

**July-11**

**GENERAL RELEASE**

Strategic Analysis & Forecasting

**TORONTO PEARSON INTERNATIONAL AIRPORT  
AIRPORT ACTIVITY REPORT  
REVENUE AND NON REVENUE PASSENGERS**

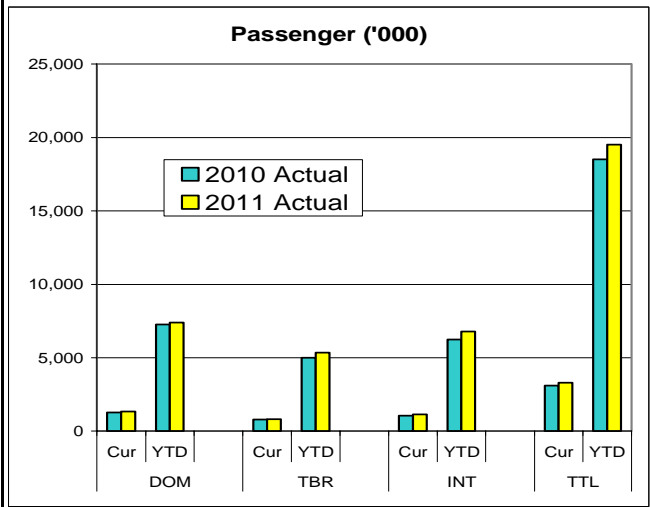
**July-11**

Actual As of: 20-Sep-2011

Actual  
11/10

Actual  
10/09

SECTOR	2011	2010	% AAGR	SECTOR	2011	2010	% AAGR
<b>TERMINAL ONE</b>				<b>TOTAL AIRPORT</b>			
DOM	943,818	913,603	3.3%	DOM	1,342,358	1,267,682	5.89%
YTD	5,311,434	5,332,090	-0.4%	YTD	7,396,087	7,263,729	1.82%
12 Mth Total	9,278,769	9,287,558	-0.1%	12 Mth Total	12,863,155	12,711,972	1.19%
TBR	565,844	500,003	13.2%	TBR	814,072	782,248	4.07%
YTD	3,712,903	3,187,900	16.5%	YTD	5,328,055	4,995,588	6.66%
12 Mth Total	6,070,084	5,269,023	15.2%	12 Mth Total	8,961,318	8,305,033	7.90%
INT'L	643,181	624,034	3.1%	INT'L	1,135,995	1,053,789	7.80%
YTD	3,805,972	3,632,214	4.8%	YTD	6,792,644	6,239,252	8.87%
12 Mth Total	6,389,141	5,959,893	7.2%	12 Mth Total	11,131,639	10,115,156	10.05%
<b>TOTAL</b>	<b>2,152,843</b>	<b>2,037,640</b>	<b>5.7%</b>	<b>TOTAL</b>	<b>3,292,425</b>	<b>3,103,719</b>	<b>6.08%</b>
YTD	12,830,309	12,152,204	5.6%	YTD	19,516,786	18,498,569	5.50%
12 Mth Total	21,737,994	20,516,474	6.0%	12 Mth Total	32,956,112	31,132,161	5.86%
<b>TERMINAL THREE</b>							
DOM	398,540	354,079	12.6%				
YTD	2,084,653	1,931,639	7.9%				
12 Mth Total	3,584,386	3,424,414	4.7%				
TBR	248,228	282,245	-12.1%				
YTD	1,615,152	1,807,688	-10.7%				
12 Mth Total	2,891,234	3,036,010	-4.8%				
INT'L	492,814	429,755	14.7%				
YTD	2,986,672	2,607,038	14.6%				
12 Mth Total	4,742,498	4,155,263	14.1%				
<b>TOTAL</b>	<b>1,139,582</b>	<b>1,066,079</b>	<b>6.9%</b>				
YTD	6,686,477	6,346,365	5.4%				
12 Mth Total	11,218,118	10,615,687	5.7%				



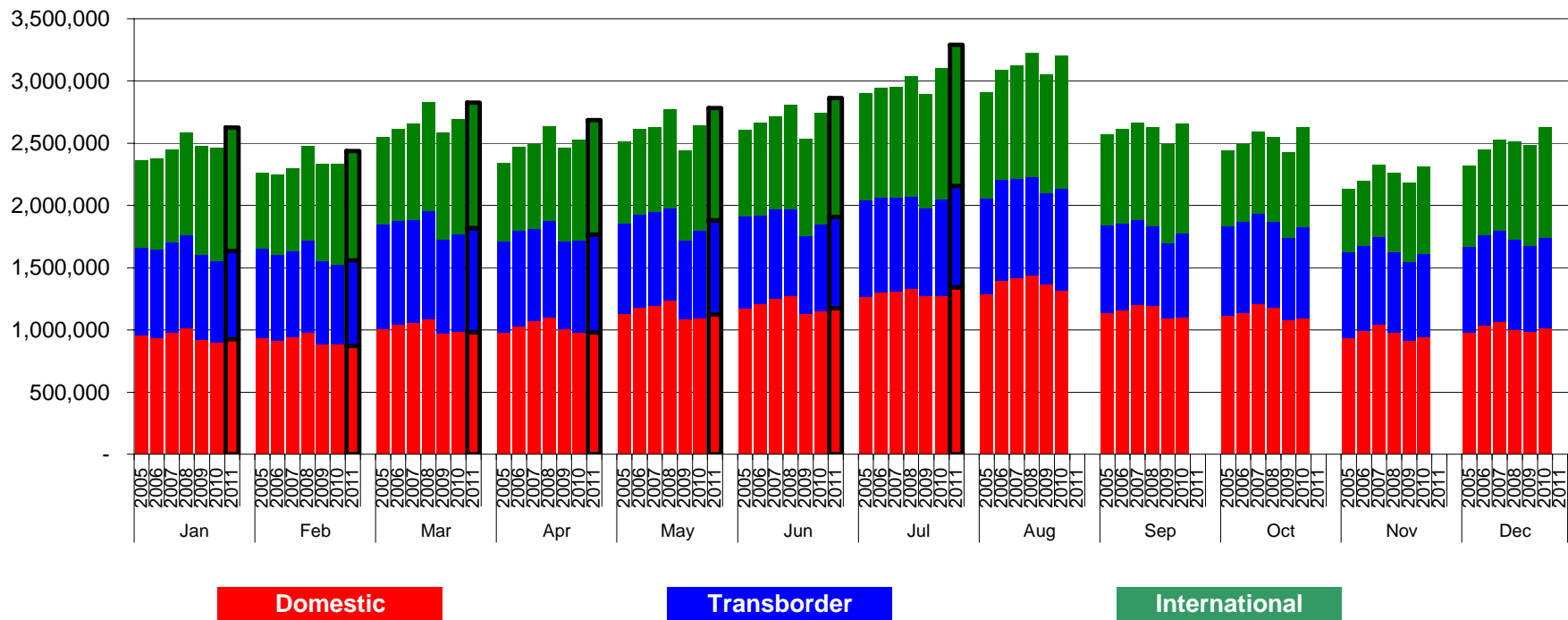
**Notes:** Above data is preliminary and subject to subsequent adjustments as new information is obtained.

DOM - Domestic travel within Canada  
TBR - Transborder to U.S. only  
INT'L - International countries excluding the USA

12 Month Period Aug-10 to Jul-11

T2 Closed in Jan 2007 - Traffic transferred to T1.

## TORONTO PEARSON INTERNATIONAL AIRPORT Total Passengers 2005 - 2011



**Notes:** Above data is preliminary and subject to subsequent adjustments as new information is obtained.

TORONTO PEARSON INTERNATIONAL AIRPORT									
2010									
TOTAL PASSENGERS									
MONTH		DOM.	08/07	T/B	08/07	INT'L	08/07	Total	08/07
JAN	T1	676,153		414,793		496,159		1,587,105	
	T3	224,631		238,725		410,441		873,797	
Ttl JAN		900,784	-2.4%	653,518	-4%	906,600	4%	2,460,902	-1%
FEB	T1	656,460		406,594		434,356		1,497,410	
	T3	230,947		228,457		374,175		833,579	
Ttl FEB		887,407	0.0%	635,051	-4.6%	808,531	3.8%	2,330,989	0.0%
Mar	T1	735,284		497,501		519,624		1,752,409	
	T3	249,821		284,856		405,707		940,384	
Ttl Mar		985,105	1.6%	782,357	3.8%	925,331	7.0%	2,692,793	4.1%
Apr	T1	719,708		470,943		487,789		1,678,440	
	T3	256,659		275,068		319,174		850,901	
Ttl Apr		976,367	-3.1%	746,011	6.2%	806,963	7.1%	2,529,341	2.7%
May	T1	791,221		440,803		523,825		1,755,849	
	T3	303,476		260,821		321,669		885,966	
Ttl May		1,094,697	0.6%	701,624	11.5%	845,494	16.7%	2,641,815	8.2%
June	T1	839,661		457,469		546,221		1,843,351	
	T3	312,026		238,008		345,625		895,659	
Ttl June		1,151,687	1.5%	695,477	11.4%	891,846	14.5%	2,739,010	7.9%
July	T1	913,603		500,003		624,034		2,037,640	
	T3	354,079		282,245		429,755		1,066,079	
Ttl July		1,267,682	-0.3%	782,248	10.8%	1,053,789	15.2%	3,103,719	7.3%
Aug	T1	956,610		512,194		633,792		2,102,596	
	T3	362,154		303,370		431,775		1,097,299	
Ttl Aug		1,318,764	-3.7%	815,564	11.8%	1,065,567	11.4%	3,199,895	4.7%
Sep	T1	796,388		430,046		533,966		1,760,400	
	T3	305,227		249,129		347,308		901,664	
Ttl Sep		1,101,615	0.6%	679,175	11.9%	881,274	11.4%	2,662,064	6.8%
Oct	T1	786,679		465,818		487,634		1,740,131	
	T3	307,297		269,910		314,889		892,096	
Ttl Oct		1,093,976	1.1%	735,728	11.8%	802,523	17.6%	2,632,227	8.6%
Nov	T1	684,056		456,046		415,250		1,555,352	
	T3	257,243		216,902		284,808		758,953	
Ttl Nov		941,299	3.1%	672,948	7.0%	700,058	9.8%	2,314,305	6.2%
Dec	T1	743,602		493,077		512,527		1,749,206	
	T3	267,812		237,055		376,762		881,629	
Ttl Dec		1,011,414	2.4%	730,132	6.4%	889,289	10.0%	2,630,835	6.0%
Grand Ttl	T1	9,299,425		5,545,081		6,215,383		21,059,889	
	T3	3,431,372		3,083,770		4,362,864		10,878,006	
		12,730,797	0.0%	8,628,851	6.9%	10,578,247	10.6%	31,937,895	5.2%

TORONTO PEARSON INTERNATIONAL AIRPORT									
2011									
TOTAL PASSENGERS									
As of:26-Jan-10									
MONTH		DOM.	09/08	T/B	09/08	INT'L	09/08	Total	09/08
JAN	T1	685,107		490,797		536,007		1,711,911	
	T3	240,954		218,988		455,572		915,514	
Ttl JAN		926,061	2.8%	709,785	8.7%	991,579	9.3%	2,627,425	6.8%
FEB	T1	633,906		476,556		466,966		1,577,428	
	T3	236,365		212,897		411,312		860,574	
Ttl FEB		870,271	-1.9%	689,453	8.6%	878,278	8.6%	2,438,002	4.6%
Mar	T1	716,097		579,409		550,470		1,845,976	
	T3	264,214		258,755		457,919		980,888	
Ttl Mar		980,311	-0.5%	838,164	7.2%	1,008,389	8.9%	2,826,864	5.0%
Apr	T1	714,515		550,726		533,768		1,799,009	
	T3	264,778		234,896		385,944		885,618	
Ttl Apr		979,293	0.3%	785,622	5.3%	919,712	14.0%	2,684,627	6.1%
May	T1	792,558		525,932		525,246		1,843,736	
	T3	330,965		232,456		375,048		938,469	
Ttl May		1,123,523	2.6%	758,388	8.1%	900,294	6.5%	2,782,205	5.3%
June	T1	825,433		523,639		550,334		1,899,406	
	T3	348,837		208,932		408,063		965,832	
Ttl June		1,174,270	2.0%	732,571	5.3%	958,397	7.5%	2,865,238	4.6%
July	T1	943,818		565,844		643,181		2,152,843	
	T3	398,540		248,228		492,814		1,139,582	
Ttl July		1,342,358	5.9%	814,072	4.1%	1,135,995	7.8%	3,292,425	6.1%
Aug	T1								
	T3								
Ttl Aug									
Sep	T1								
	T3								
Ttl Sep									
Oct	T1								
	T3								
Ttl Oct									
Nov	T1								
	T3								
Ttl Nov									
Dec	T1								
	T3								
Ttl Dec									
Grand Ttl	T1	5,311,434		3,712,903		3,805,972		12,830,309	
	T3	2,084,653		1,615,152		2,986,672		6,686,477	
		7,396,087		5,328,055		6,792,644		19,516,786	

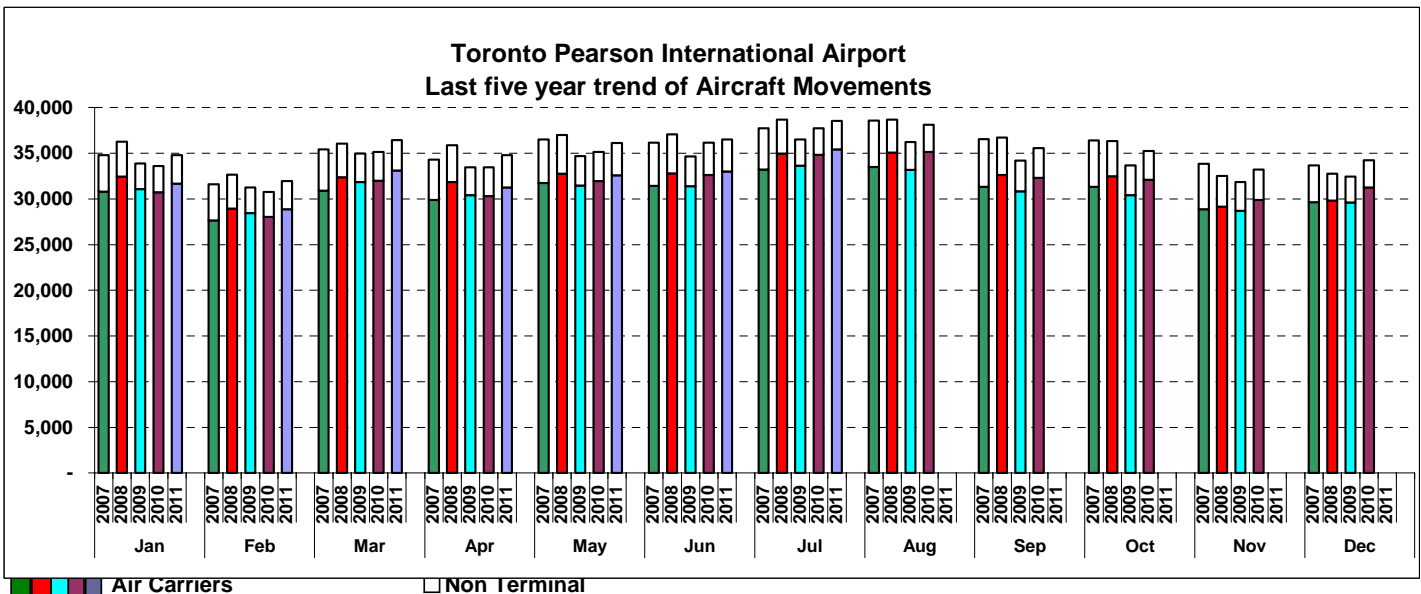
Notes: Above data is preliminary and subject to subsequent adjustments as new information is obtained.

## TORONTO PEARSON INTERNATIONAL AIRPORT AIRCRAFT MOVEMENTS

**July**

	Actual		11/10 % Chg	Actual
	2011	2010		2009
<b>AIR CARRIER</b>				
<b>&gt; 35T Current</b>	23,444	22,916	2.3%	20,982
Ytd	147,093	143,518	2.5%	139,095
12 Month*	251,295	238,319	5.4%	240,884
<b>&lt;35T Current</b>	11,974	11,904	0.6%	12,647
Ytd	78,770	76,894	2.4%	79,114
12 Month*	135,211	134,817	0.3%	180,903
<b>Current</b>	35,418	34,820	1.7%	33,629
Ytd	225,863	220,412	2.5%	218,209
12 Month*	386,506	373,136	3.6%	421,787
<b>General Aviation</b>	3,124	2,912	7.3%	2,872
Ytd	23,227	21,551	7.8%	21,177
12 Month*	38,919	37,164	4.7%	39,131
<b>TOTAL ALL OPERATIONS</b>				
<b>Current</b>	38,542	37,732	2.1%	36,501
Ytd	249,090	241,963	2.9%	239,386
12 Month*	425,425	410,300	3.7%	460,918

- 1) Data is based on Planning's analysis of NAVCANADA data
  - 2) Data represents Arrivals and Departures, both Itinerant and Local
- \*12 Month Period Aug-10 to Jul-11



# Airport Activity Statistics Report

Gates on Pier Hammerhead F of T1 opened Jan 31, 2007

! ceased operation January 30, 2007 at 9:30 pm.(East Hold continues to operate from )

ie New T1 1 opened 10 new gates November 1, 2005

ie New T1 1 opened on April 6, 2004 and T1Old ceased operating on the same day.

ssenger comparisons shown in the Passengers by Terminal reflect T1Old vs. T1 (New) thin the T1 table.

ssengers using the IFT (Infield Terminal) previously processed at T1Old are now ccessed at T1 and are included in the same comparison table

ovember 2010 – Continental moved to T1

ay 16, 2008 – Air India moved to T1

ay 2, 2008 – Icelandair begins operations at T1

arch 29, 2008 – US Air moved to T1

ne 22, 2005 - Westjet moved back to T3

ril 18, 2004 - Westjet moves from T3 to T2

ril 6, 2004 - Air Canada/Jazz Domestic and International operations transfer from T1 ld) and T2 to T1 (New) along with other Star Alliance and other T1 (Old) carriers.

ne 2, 2003 - Tango moved from T3 to T2 and is a fare option for Air Canada's omestic and some Transborder activities

ril - June 2000 - Canadian Airlines and its regional affiliates transferred Domestic and ansborder operations to T2 and International services to T1 as it merged with Air nada. Carriers which had been operating in T1 transferred to T3 including Delta, 3Air, Continental, and several international carriers. T2 International Operations oved to T1 (ACA, DLH, MXA, etc.)

## mpacts

**ne 13 – 16, 2011**, - Air Canada labor strike

**ne 25 – 27, 2010**, - G8/20 Leaders Summit.

**nuary 31, 2010**, - NWA ceased operation to merged with Delta Airlines

**ecember 25, 2009**, – Failed terrorist attempt on Delta flight from Amsterdam to Detroit ading to additional security restrictions on transborder air travel

**ril, 2009**, - H1N1 (Swine Flu) virus in Mexico. Resulted travel restriction around the rld. Travel advisory to Canadians for Mexico issued

**igust 9, 2006**, - British and US airlines threatened – all carry-on screened

ajor thunderstorms hit GTA, **August, 2005**

**igust 2, 2005** – Air France A340 crashes. No fatalities

**arch 11, 2005** - Jetsgo declared protection from bankruptcy

**ril 2004** - WestJet increased operations at Toronto and cut back some service at umilton Airport

ajor blackout in Ontario and eastern seaboard of the USA – **August 14-16, 2003**

orld Health Organization (WHO) imposes travel restriction to the Toronto area due to vere Acute Respiratory Syndromes (SARS) April, 2003 until **July, 2003**

ar in Iraq – started **March 19, 2003 - ended mid April 2003**, still occupied

ajor ice storms in Toronto and Eastern Canada - **April 3 - 4, 2003**

r Canada files for bankruptcy protection – **April 1, 2003**

ar in Iraq – started **March 19, 2003 - ended mid-April 2003**. still occupied