



Greater Toronto Airports Authority

Memorandum

GENERAL RELEASE

To :

From : Brad Robertson

Date : July 18, 2011

RE: AVIATION ACTIVITY REPORT – **APRIL 2011**

The April 2011 Aviation Activity Report is now available on i-share for your information and reference. Please follow the link below to view.

[P04 - Statistics - Monthly Activity Report – April, 2011](#)

Overall passenger traffic at Toronto Pearson in April increased 6.1% over April 2010. The strongest growth of 14.0% occurred in the international sector despite ongoing political tensions in the Middle East and the after effects of the earthquake in Japan. The transborder and domestic passenger growth rates were 5.3% and 0.3% respectively. The total April passenger volume surpassed our previous high for April established in 2008 by 1.6%.

Total aircraft movements at Toronto Pearson increased by 3.8% in the first four months of 2010 compared to same period last year, including strong growth of non-terminal aircraft operations which increased by 9.8%.

Original signed by

Brad Robertson
General Manager
Strategic Analysis & Forecasting



TORONTO PEARSON AVIATION ACTIVITY REPORT

April-11

GENERAL RELEASE

Strategic Analysis & Forecasting

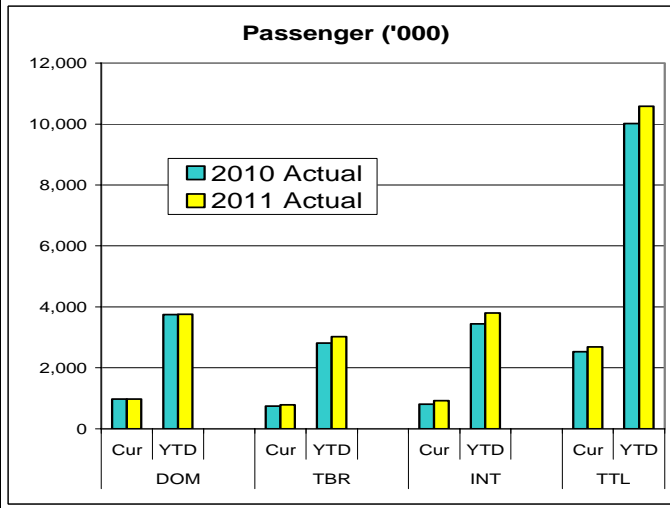
**TORONTO PEARSON INTERNATIONAL AIRPORT
AIRPORT ACTIVITY REPORT
REVENUE AND NON REVENUE PASSENGERS**

April-11

Actual
11/10
As of: 29-June-2011

Actual
10/09

SECTOR	2011	2010	% AAGR	SECTOR	2011	2010	% AAGR
TERMINAL ONE							
DOM	714,515	719,708	-0.7%	DOM	979,293	976,367	0.30%
YTD	2,749,625	2,787,605	-1.4%	YTD	3,755,936	3,749,663	0.17%
12 Mth Total	9,261,445	9,303,325	-0.5%	12 Mth Total	12,737,070	12,692,940	0.35%
TBR	550,726	470,943	16.9%	TBR	785,622	746,011	5.31%
YTD	2,097,488	1,789,625	17.2%	YTD	3,023,024	2,816,239	7.34%
12 Mth Total	5,852,944	5,124,515	14.2%	12 Mth Total	8,835,636	8,084,937	9.29%
INT'L	533,768	487,789	9.4%	INT'L	919,712	806,963	13.97%
YTD	2,087,211	1,938,134	7.7%	YTD	3,797,958	3,448,123	10.15%
12 Mth Total	6,364,460	5,724,433	11.2%	12 Mth Total	10,928,082	9,742,459	12.17%
TOTAL	1,799,009	1,678,440	7.2%	TOTAL	2,684,627	2,529,341	6.14%
YTD	6,934,324	6,515,364	6.4%	YTD	10,576,918	10,014,025	5.62%
12 Mth Total	21,478,849	20,152,273	6.6%	12 Mth Total	32,500,788	30,520,336	6.49%
TERMINAL THREE							
DOM	264,778	256,659	3.2%	DOM	979,293	976,367	0.30%
YTD	1,006,311	962,058	4.6%	YTD	3,755,936	3,749,663	0.17%
12 Mth Total	3,475,625	3,389,615	2.5%	12 Mth Total	12,737,070	12,692,940	0.35%
TBR	234,896	275,068	-14.6%	TBR	785,622	746,011	5.31%
YTD	925,536	1,026,614	-9.8%	YTD	3,023,024	2,816,239	7.34%
12 Mth Total	2,982,692	2,960,422	0.8%	12 Mth Total	8,835,636	8,084,937	9.29%
INT'L	385,944	319,174	20.9%	INT'L	919,712	806,963	13.97%
YTD	1,710,747	1,509,989	13.3%	YTD	3,797,958	3,448,123	10.15%
12 Mth Total	4,563,622	4,018,026	13.6%	12 Mth Total	10,928,082	9,742,459	12.17%
TOTAL	885,618	850,901	4.1%	TOTAL	2,684,627	2,529,341	6.14%
YTD	3,642,594	3,498,661	4.1%	YTD	10,576,918	10,014,025	5.62%
12 Mth Total	11,021,939	10,368,063	6.3%	12 Mth Total	32,500,788	30,520,336	6.49%



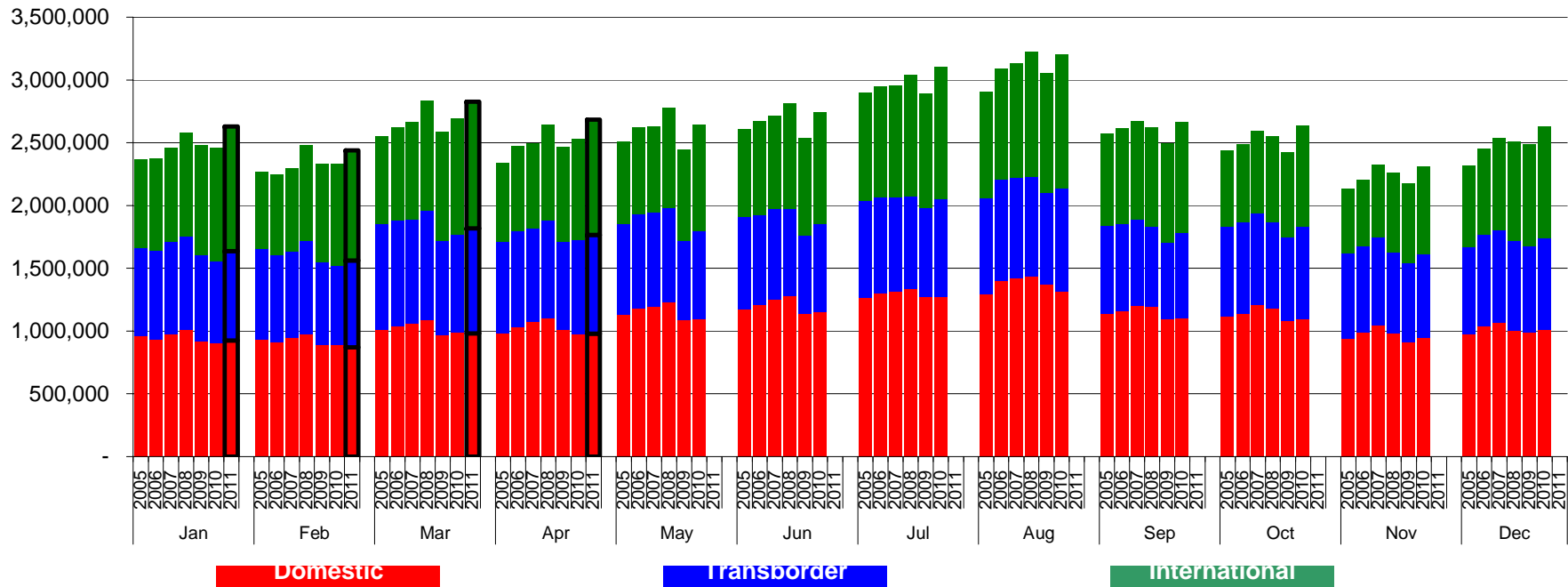
Notes: Above data is preliminary and subject to subsequent adjustments as new information is obtained.

DOM - Domestic travel within Canada
TBR - Transborder to U.S. only
INT'L - International countries excluding the USA

12 Month Period May-10 to Apr-11

T2 Closed in Jan 2007 - Traffic transferred to T1.

TORONTO PEARSON INTERNATIONAL AIRPORT Total Passengers 2005 - 2011



Notes: Above data is preliminary and subject to subsequent adjustments as new information is obtained.

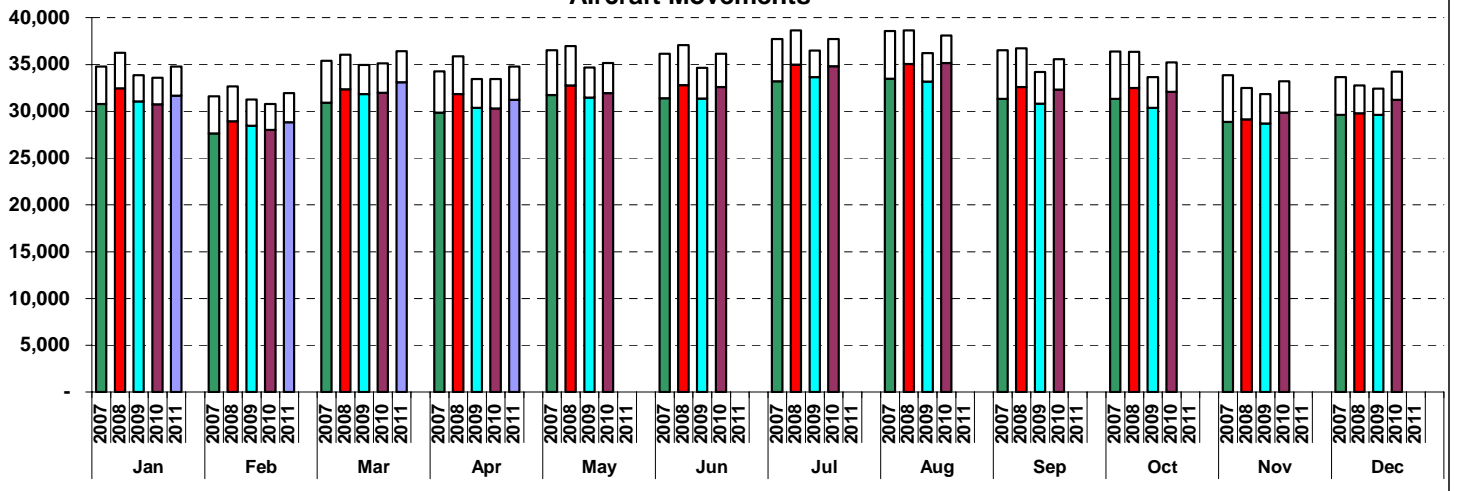
TORONTO PEARSON INTERNATIONAL AIRPORT AIRCRAFT MOVEMENTS

April

	Actual		11/10 % Chg	Actual
	2011	2010		2009
AIR CARRIER				
> 35T Current	20,154	19,690	2.4%	19,356
Ytd	81,140	78,993	2.7%	79,085
12 Month*	249,867	233,804	6.9%	246,056
<35T Current	11,068	10,619	4.2%	11,029
Ytd	43,734	42,037	4.0%	42,644
12 Month*	<u>135,032</u>	<u>136,430</u>	-1.0%	<u>209,615</u>
Current	31,222	30,309	3.0%	30,385
Ytd	124,874	121,030	3.2%	121,729
12 Month*	384,899	370,234	4.0%	455,671
General Aviation	3,554	3,147	12.9%	3,059
Ytd	13,076	11,906	9.8%	11,803
12 Month*	<u>38,413</u>	<u>36,893</u>	4.1%	<u>41,942</u>
<u>TOTAL ALL OPERATIONS</u>				
Current	34,776	33,456	3.9%	33,444
Ytd	137,950	132,936	3.8%	133,532
12 Month*	<u>423,312</u>	<u>407,127</u>	4.0%	<u>497,613</u>

- 1) Data is based on Planning's analysis of NAVCANADA data
 - 2) Data represents Arrivals and Departures, both Itinerant and Local
- *12 Month Period May-10 to Apr-11

**Toronto Pearson International Airport
Aircraft Movements**



Airport Activity Statistics Report

Gates on Pier Hammerhead F of T1 opened Jan 31, 2007

! ceased operation January 30, 2007 at 9:30 pm.(East Hold continues to operate from)

ie New T1 1 opened 10 new gates November 1, 2005

ie New T1 1 opened on April 6, 2004 and T1Old ceased operating on the same day.

ssenger comparisons shown in the Passengers by Terminal reflect T1Old vs. T1 (New) thin the T1 table.

ssengers using the IFT (Infield Terminal) previously processed at T1Old are now ccessed at T1 and are included in the same comparison table

ovember 2010 – Continental moved to T1

ay 16, 2008 – Air India moved to T1

ay 2, 2008 – Icelandair begins operations at T1

arch 29, 2008 – US Air moved to T1

ne 22, 2005 - Westjet moved back to T3

ril 18, 2004 - Westjet moves from T3 to T2

ril 6, 2004 - Air Canada/Jazz Domestic and International operations transfer from T1 ld) and T2 to T1 (New) along with other Star Alliance and other T1 (Old) carriers.

ne 2, 2003 - Tango moved from T3 to T2 and is a fare option for Air Canada's omestic and some Transborder activities

ril - June 2000 - Canadian Airlines and its regional affiliates transferred Domestic and ansborder operations to T2 and International services to T1 as it merged with Air nada. Carriers which had been operating in T1 transferred to T3 including Delta, 3Air, Continental, and several international carriers. T2 International Operations oved to T1 (ACA, DLH, MXA, etc.)

mpacts

ne 13 – 16, 2011, - Air Canada labor strike

ne 25 – 27, 2010, - G8/20 Leaders Summit.

nuary 31, 2010, - NWA ceased operation to merged with Delta Airlines

ecember 25, 2009, – Failed terrorist attempt on Delta flight from Amsterdam to Detroit ading to additional security restrictions on transborder air travel

ril, 2009, - H1N1 (Swine Flu) virus in Mexico. Resulted travel restriction around the rld. Travel advisory to Canadians for Mexico issued

igust 9, 2006, - British and US airlines threatened – all carry-on screened

ajor thunderstorms hit GTA, **August, 2005**

igust 2, 2005 – Air France A340 crashes. No fatalities

arch 11, 2005 - Jetsgo declared protection from bankruptcy

ril 2004 - WestJet increased operations at Toronto and cut back some service at umilton Airport

ajor blackout in Ontario and eastern seaboard of the USA – **August 14-16, 2003**

orld Health Organization (WHO) imposes travel restriction to the Toronto area due to vere Acute Respiratory Syndromes (SARS) April, 2003 until **July, 2003**

ar in Iraq – started **March 19, 2003 - ended mid April 2003**, still occupied

ajor ice storms in Toronto and Eastern Canada - **April 3 - 4, 2003**

r Canada files for bankruptcy protection – **April 1, 2003**

ar in Iraq – started **March 19, 2003 - ended mid-April 2003**. still occupied