



TORONTO PEARSON AVIATION ACTIVITY REPORT

Dec-10

GENERAL RELEASE

Strategic Analysis & Forecasting

**TORONTO PEARSON INTERNATIONAL AIRPORT
AIRPORT ACTIVITY REPORT
REVENUE AND NON REVENUE PASSENGERS**

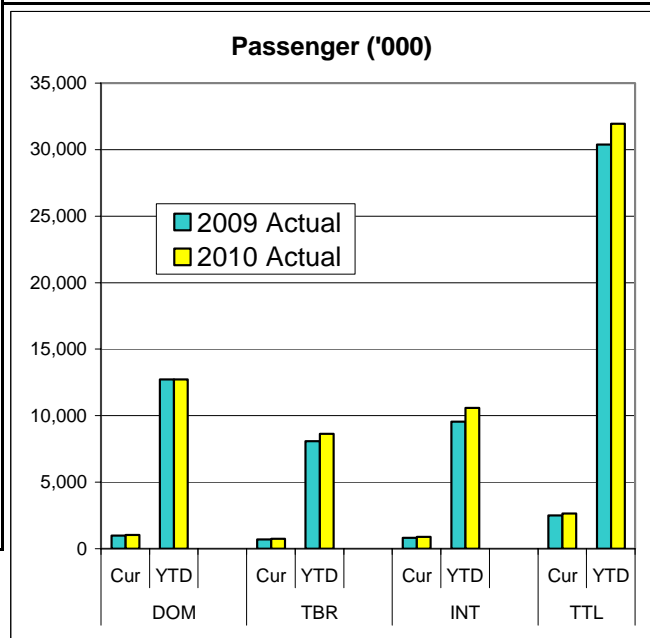
December-10

As of: 26-Jan-10

Actual
10/09

SECTOR	2010	2009	% DIFF	SECTOR	2010	2009	% DIFF
TERMINAL ONE				TOTAL AIRPORT			
DOM	743,602	737,453	0.8%	DOM	1,011,429	988,155	2.4%
YTD	9,299,425	9,399,832	-1.1%	YTD	12,730,812	12,730,047	0.0%
12 Mth Total	9,299,425	9,399,832	-1.1%	12 Mth Total	12,730,812	12,730,047	0.0%
TBR	493,812	420,043	17.6%	TBR	731,766	686,040	6.7%
YTD	5,546,019	5,213,479	6.4%	YTD	8,631,391	8,074,027	6.9%
12 Mth Total	5,546,019	5,213,479	6.4%	12 Mth Total	8,631,391	8,074,027	6.9%
INT'L	511,782	466,798	9.6%	INT'L	884,108	808,676	9.3%
YTD	6,214,432	5,546,882	12.0%	YTD	10,570,294	9,564,265	10.5%
12 Mth Total	6,214,432	5,546,882	12.0%	12 Mth Total	10,570,294	9,564,265	10.5%
TOTAL	1,749,196	1,624,294	7.7%	TOTAL	2,627,303	2,482,871	5.8%
YTD	21,059,876	20,160,193	4.5%	YTD	31,932,497	30,368,339	5.2%
12 Mth Total	21,059,876	20,160,193	4.5%	12 Mth Total	31,932,497	30,368,339	5.2%

TERMINAL THREE			
DOM	267,827	250,702	6.8%
YTD	3,431,387	3,330,215	3.0%
12 Mth Total	3,431,387	3,330,215	3.0%
TBR	237,954	265,997	-10.5%
YTD	3,085,372	2,860,548	7.9%
12 Mth Total	3,085,372	2,860,548	7.9%
INT'L	372,326	341,878	8.9%
YTD	4,355,862	4,017,383	8.4%
12 Mth Total	4,355,862	4,017,383	8.4%
TOTAL	878,107	858,577	2.3%
YTD	10,872,621	10,208,146	6.5%
12 Mth Total	10,872,621	10,208,146	6.5%

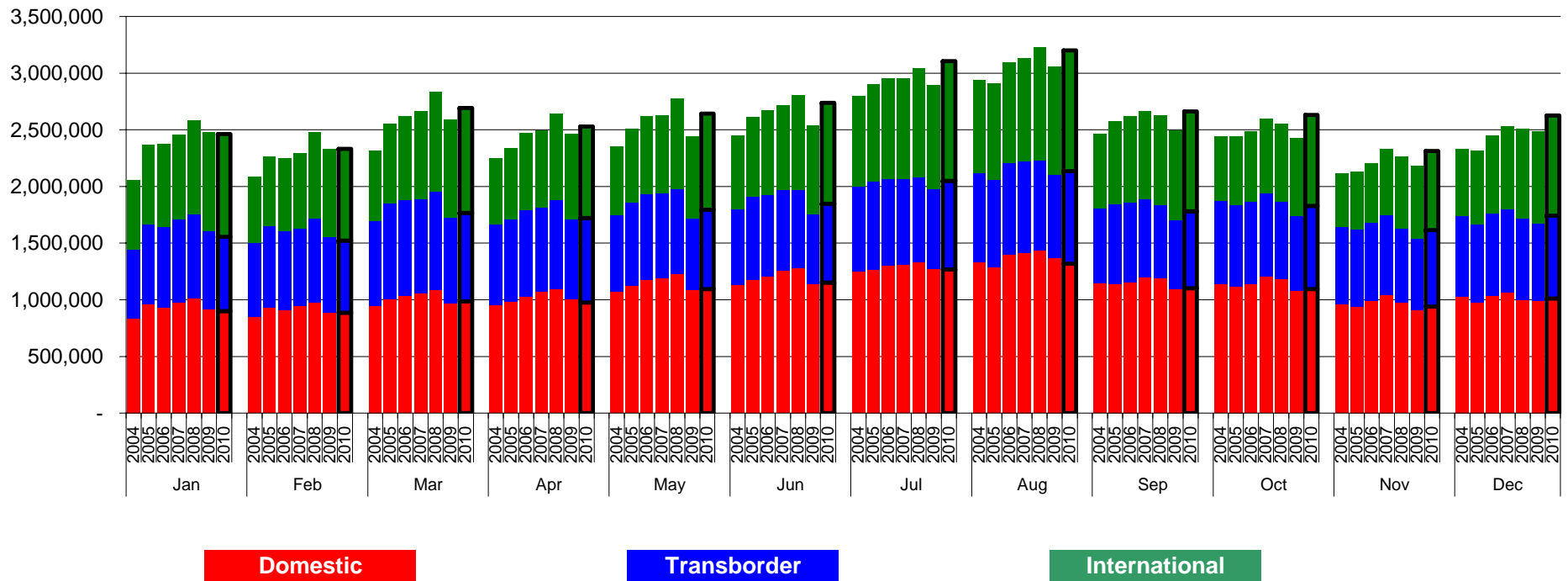


Notes: Above data is preliminary and subject to subsequent adjustments as new information is received.
 DOM - Domestic travel within Canada
 TBR - Transborder to U.S. only
 INT'L - International countries excluding the USA

12 Month Period NOV '09 to OCT '10

T2 Closed in Jan 2007 - Traffic transferred to T1.

TORONTO PEARSON INTERNATIONAL AIRPORT Total Passengers 2004 - 2010



Notes: Above data is preliminary and subject to subsequent adjustments as new information is obtained.

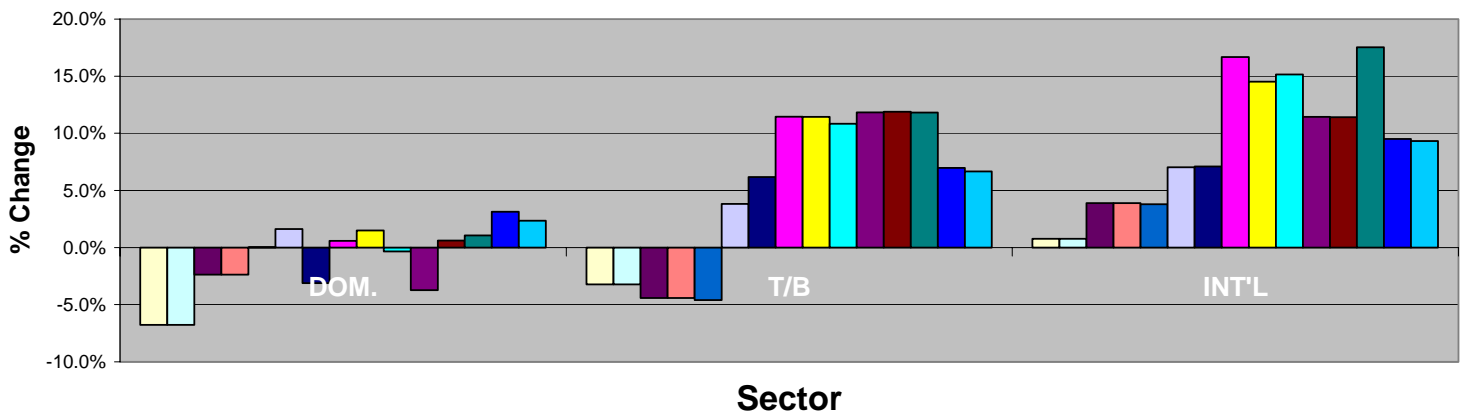
TORONTO PEARSON INTERNATIONAL AIRPORT									
2009									
TOTAL PASSENGERS									
MONTH		DOM.	08/07	T/B	08/07	INT'L	08/07	Total	08/07
JAN	T1	700,188		447,942		458,752		1,606,882	
	T3	222,413		235,508		414,116		872,037	
Ttl JAN		922,601	-8.9%	683,450	-8%	872,868	6%	2,478,919	5%
FEB	T1	677,897		448,125		404,103		1,530,125	
	T3	209,219		217,573		374,927		801,719	
Ttl FEB		887,116	-9.2%	665,698	-10.1%	779,030	2.1%	2,331,844	8.1%
Mar	T1	738,651		512,832		459,455		1,710,938	
	T3	230,810		240,744		405,174		876,728	
Ttl Mar		969,461	-11.0%	753,576	-13.0%	864,629	-1.3%	2,587,666	6.4%
Apr	T1	767,376		469,690		438,273		1,675,339	
	T3	240,216		232,915		315,129		788,260	
Ttl Apr		1,007,592	-8.2%	702,605	-10.2%	753,402	-1.0%	2,463,599	6.0%
May	T1	788,471		409,201		443,098		1,640,770	
	T3	299,895		220,282		281,506		801,683	
Ttl May		1,088,366	-11.6%	629,483	-15.8%	724,604	-9.0%	2,442,453	5.6%
June	T1	837,528		401,432		471,382		1,710,342	
	T3	297,060		222,619		307,351		827,030	
Ttl June		1,134,588	-11.2%	624,051	-9.9%	778,733	-7.2%	2,537,372	3.4%
July	T1	934,253		443,134		544,140		1,921,527	
	T3	337,827		262,585		370,955		971,367	
Ttl July		1,272,080	-4.6%	705,719	-5.0%	915,095	-5.1%	2,892,894	3.0%
Aug	T1	987,143		458,510		569,496		2,015,149	
	T3	382,686		270,711		386,657		1,040,054	
Ttl Aug		1,369,829	-4.7%	729,221	-7.5%	956,153	-4.1%	3,055,203	3.0%
Sep	T1	781,166		387,545		479,324		1,648,035	
	T3	313,807		219,389		311,580		844,776	
Ttl Sep		1,094,973	-8.3%	606,934	-5.2%	790,904	-0.2%	2,492,811	-1.5%
Oct	T1	765,114		422,143		432,596		1,619,853	
	T3	317,394		236,025		249,980		803,399	
Ttl Oct		1,082,508	-8.3%	658,168	-4.5%	682,576	0.1%	2,423,252	-1.7%
Nov	T1	684,592		392,882		379,465		1,456,939	
	T3	228,186		236,200		258,130		722,516	
Ttl Nov		912,778	-6.8%	629,082	-3.2%	637,595	0.8%	2,179,455	-2.8%
Dec	T1	737,453		420,043		466,798		1,624,294	
	T3	250,702		265,997		341,878		858,577	
Ttl Dec		988,155	-1.4%	686,040	-4.9%	808,676	2.6%	2,482,871	-0.8%
Grand Ttl	T1	9,399,832		5,213,479		5,546,882		20,160,193	
	T3	3,330,215		2,860,548		4,017,383		10,208,146	
Grand Ttl		12,730,047	-7.8%	8,074,027	-8.3%	9,564,265	-1.6%	30,368,339	2.8%

TORONTO PEARSON INTERNATIONAL AIRPORT									
2010									
TOTAL PASSENGERS									
As of:26-Jan-10									
MONTH		DOM.	09/08	T/B	09/08	INT'L	09/08	Total	09/08
JAN	T1	676,153		414,793		496,159		1,587,105	
	T3	224,631		238,725		410,441		873,797	
Ttl JAN		900,784	-2.4%	653,518	-4.4%	906,600	3.9%	2,460,902	-0.7%
FEB	T1	656,460		406,594		434,356		1,497,410	
	T3	230,947		228,457		374,175		833,579	
Ttl FEB		887,407	0.0%	635,051	-4.6%	808,531	3.8%	2,330,989	0.0%
Mar	T1	735,284		497,501		519,624		1,752,409	
	T3	249,821		284,856		405,707		940,384	
Ttl Mar		985,105	1.6%	782,357	3.8%	925,331	7.0%	2,692,793	4.1%
Apr	T1	719,708		470,943		487,789		1,678,440	
	T3	256,659		275,068		319,174		850,901	
Ttl Apr		976,367	-3.1%	746,011	6.2%	806,963	7.1%	2,529,341	2.7%
May	T1	791,221		440,803		523,825		1,755,849	
	T3	303,476		260,821		321,669		885,966	
Ttl May		1,094,697	0.6%	701,624	11.5%	845,494	16.7%	2,641,815	8.2%
June	T1	839,661		457,469		546,221		1,843,351	
	T3	312,026		238,008		345,625		895,659	
Ttl June		1,151,687	1.5%	695,477	11.4%	891,846	14.5%	2,739,010	7.9%
July	T1	913,603		500,003		624,034		2,037,640	
	T3	354,079		283,372		428,628		1,066,079	
Ttl July		1,267,682	-0.3%	783,375	11.0%	1,052,662	15.0%	3,103,719	7.3%
Aug	T1	956,610		512,194		633,792		2,102,596	
	T3	362,154		304,176		430,969		1,097,299	
Ttl Aug		1,318,764	-3.7%	816,370	12.0%	1,064,761	11.4%	3,199,895	4.7%
Sep	T1	796,388		430,046		533,966		1,760,400	
	T3	305,227		249,632		346,805		901,664	
Ttl Sep		1,101,615	0.6%	679,678	12.0%	880,771	11.4%	2,662,064	6.8%
Oct	T1	786,679		465,818		487,634		1,740,131	
	T3	307,297		270,107		314,690		892,094	
Ttl Oct		1,093,976	1.1%	735,925	11.8%	802,324	17.5%	2,632,225	8.6%
Nov	T1	684,056		456,043		415,250		1,555,349	
	T3	257,243		216,884		282,965		757,092	
Ttl Nov		941,299	3.1%	672,927	7.0%	698,215	9.5%	2,312,441	6.1%
Dec	T1	743,602		493,812		511,782		1,749,196	
	T3	267,827		237,954		372,326		878,107	
Ttl Dec		1,011,429	2.4%	731,766	6.7%	884,108	9.3%	2,627,303	5.8%
Grand Ttl	T1	9,299,425		5,546,019		6,214,432		21,059,876	
	T3	3,431,387		3,085,372		4,355,862		10,872,621	
Grand Ttl		12,730,812	0.0%	8,631,391	6.9%	10,570,294	10.5%	31,932,497	5.2%

Notes: Above data is preliminary and subject to subsequent adjustments as new information is obtained.

Annual Percentage Changes by month and sector

Legend: Oct'09, Nov'09, Dec'09, Jan'10, Feb'10, Mar'10, Apr'10, May'10, June'10, July'10, Aug'10, Sep'10, Oct'10, Nov'10, Dec'10

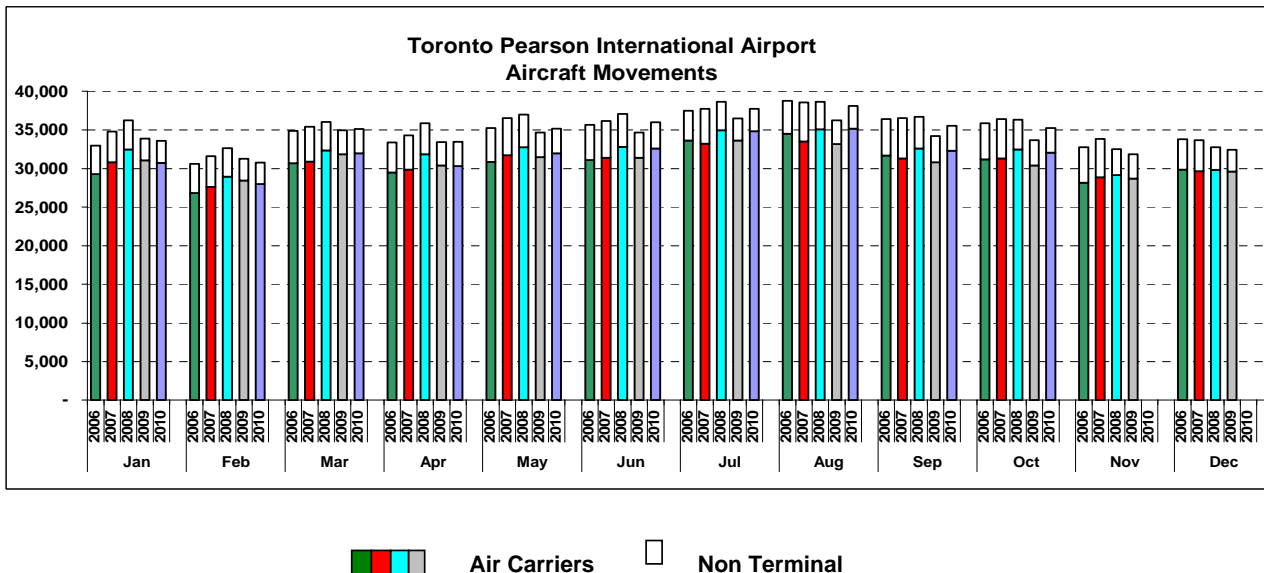


TORONTO PEARSON INTERNATIONAL AIRPORT AIRCRAFT MOVEMENTS

December

	Actual		10/09 % Chg	Actual
	2010	2009		2008
AIR CARRIER				
> 35T Current	20,489	19,364	5.8%	20,121
Ytd	247,720	233,896	5.9%	209,465
12 Month*	247,720	233,896	5.9%	246,637
<35T Current	10,753	10,235	5.1%	12,362
Ytd	133,335	137,037	-2.7%	116,803
12 Month*	133,335	137,037	-2.7%	153,975
Current	31,242	29,599	5.6%	32,483
Ytd	381,055	370,933	2.7%	326,268
12 Month*	381,055	370,933	2.7%	400,612
General Aviation	2,987	2,821	5.9%	3,869
Ytd	37,243	36,790	1.2%	39,045
12 Month*	37,243	36,790	1.2%	48,043
<u>TOTAL ALL OPERATIONS</u>				
Current	34,229	32,420	5.6%	36,352
Ytd	418,298	407,723	2.6%	365,313
12 Month*	418,298	407,723	2.6%	448,655

- 1) Data is based on Planning's analysis of NAVCANADA data
 - 2) Data represents Arrivals and Departures, both Itinerant and Local
- * 12 month period ending December 2010 and Jan-2010



Airport Activity Statistics Report

Gates on Pier Hammerhead F of T1 opened Jan 31, 2007

! ceased operation January 30, 2007 at 9:30 pm.(East Hold continues to operate from)

ie New T1 1 opened 10 new gates November 1, 2005

ie New T1 1 opened on April 6, 2004 and T1Old ceased operating on the same day.

ssenger comparisons shown in the Passengers by Terminal reflect T1Old vs. T1 (New) thin the T1 table.

ssengers using the IFT (Infield Terminal) previously processed at T1Old are now ccessed at T1 and are included in the same comparison table

ovember 2010 – Continental moved to T1

ay 16, 2008 – Air India moved to T1

ay 2, 2008 – Icelandair begins operations at T1

arch 29, 2008 – US Air moved to T1

ne 22, 2005 - Westjet moved back to T3

ril 18, 2004 - Westjet moves from T3 to T2

ril 6, 2004 - Air Canada/Jazz Domestic and International operations transfer from T1 ld) and T2 to T1 (New) along with other Star Alliance and other T1 (Old) carriers.

ne 2, 2003 - Tango moved from T3 to T2 and is a fare option for Air Canada's omestic and some Transborder activities

ril - June 2000 - Canadian Airlines and its regional affiliates transferred Domestic and ansborder operations to T2 and International services to T1 as it merged with Air nada. Carriers which had been operating in T1 transferred to T3 including Delta, 3Air, Continental, and several international carriers. T2 International Operations oved to T1 (ACA, DLH, MXA, etc.)

mpacts

ne 25 – 27, 2010, - G8/20 Leaders Summit.

nuary 31, 2010, - NWA ceased operation to merged with Delta Airlines

ecember 25, 2009, – Failed terrorist attempt on Delta flight from Amsterdam to Detroit ading to additional security restrictions on transborder air travel

ril, 2009, - H1N1 (Swine Flu) virus in Mexico. Resulted travel restriction around the rld. Travel advisory to Canadians for Mexico issued

igust 9, 2006, - British and US airlines threatened – all carry-on screened ajor thunderstorms hit GTA, **August, 2005**

igust 2, 2005 – Air France A340 crashes. No fatalities

arch 11, 2005 - Jetsgo declared protection from bankruptcy

ril 2004 - WestJet increased operations at Toronto and cut back some service at umilton Airport

ajor blackout in Ontario and eastern seaboard of the USA – **August 14-16, 2003**

orld Health Organization (WHO) imposes travel restriction to the Toronto area due to vere Acute Respiratory Syndromes (SARS) April, 2003 until **July, 2003**

ar in Iraq – started **March 19, 2003 - ended mid April 2003**, still occupied

ajor ice storms in Toronto and Eastern Canada - **April 3 - 4, 2003**

r Canada files for bankruptcy protection – **April 1, 2003**

ar in Iraq – started **March 19, 2003 - ended mid-April 2003**, still occupied

nada 3000 shutdown **November 10, 2001**